



Air Conditioning & Heating

DSZC16

SPLIT SYSTEM HEAT PUMP

UP TO 16 SEER

COOLING CAPACITY: 24,000 - 57,000 BTU/H

HEATING CAPACITY: 24,000 - 57,000 BTU/H



Contents

Nomenclature	2
Product Specifications	3
Expanded Cooling Data	4
Expanded Heating Data	20
AHRI Ratings	22
Dimensions	34
Wiring Diagram	35
Accessories	36

Standard Features

- R-410A chlorine-free refrigerant
- Two-Stage Copeland® UltraTech™ scroll compressor
- High-density foam compressor sound blanket
- ComfortNet™ Communications System compatible
- Expanded ComfortAlert™ diagnostics built in
- Set-up capable with two low-voltage wires to outdoor unit
- Diagnostic indicator lights and storage of six fault codes
- Color-coded terminal strip for non-communicating set-up
- SmartShift® technology to ensure quiet, reliable defrost
- Factory-installed bi-flow liquid line filter drier
- Factory-installed suction line accumulator
- Factory-installed compressor crankcase heater
- Factory-installed high-capacity muffler
- Factory-installed coil and ambient temperature sensors
- High- and low-pressure switches
- Fully charged for 15' of tubing length
- Two-speed quiet condenser fan motor
- Sweat connection service valves with easy access to gauge ports
- AHRI Certified; ETL Listed

Cabinet Features

- Wire fan discharge grille
- Steel louver coil guard
- Baked-on powder paint finish
- Rust-resistant coated screws
- Compact footprint
- Top and side maintenance access
- Single-panel access to controls with space provided for field-installed accessories
- When properly anchored, meets 2010 Florida Building Code unit integrity requirements for hurricane-type winds (Anchor bracket kits available.)



* Complete warranty details available from your local dealer or at www.goodmamfg.com. To receive the Lifetime Compressor Limited Warranty (good for as long as you own your home), 10-Year Unit Replacement Limited Warranty and 10-Year Parts Limited Warranty, online registration must be completed within 60 days of installation. Online registration is not required in California or Québec.



NOMENCLATURE

	D	S	Z	C	16	036	1	A	A
	1	2	3	4	5,6	7,8,9	10	11	12
Brand	D Goodman® Brand High Feature Set								Engineering * Minor Revision
Product Category	S Split System								Engineering * Major Revision
Unit Type	X Condenser R-410A Z Heat Pump R-410A								Electrical
Communication Feature	C ComfortNet 4-wire communications ready								
Efficiency	13 13 SEER 16 16 SEER 14 14 SEER 18 18 SEER								
									Nominal Capacity
									024 2 Tons 048 4 Tons 036 3 Tons 060 5 Tons

* Neither used for order entry or inventory management.



SPECIFICATIONS

	DSZC16 0241A	DSZC16 0361A	DSZC16 0481A	DSZC16 0601B
CAPACITIES AND RATINGS				
Nominal Cooling (BTU/h)	24,000	36,000	48,000	60,000
Nominal Heating (BTU/h)	24,000	36,000	48,000	60,000
Decibels	72	73	74	75
COMPRESSOR				
RLA	11.7	15.3	21.2	28.8
LRA	58.3	83.0	104.0	152.9
CONDENSER FAN MOTOR				
Horsepower	1/6	1/6	1/6	1/6
FLA	1.2	1.2	1.2	1.2
REFRIGERATION SYSTEM				
Refrigerant Line Size ¹				
Liquid Line Size ("O.D.)	3/8"	3/8"	3/8"	3/8"
Suction Line Size ("O.D.)	3/4"	7/8"	1 1/8"	1 1/8"
Refrigerant Connection Size				
Liquid Valve Size ("O.D.)	3/8"	3/8"	3/8"	3/8"
Suction Valve Size ("O.D.)	3/4"	7/8"	7/8"	7/8"
Valve Connection Type	Sweat	Sweat	Sweat	Sweat
Refrigerant Charge	153	203	263	273
Shipped with Orifice Size	NA	NA	NA	NA
ELECTRICAL DATA				
Volts -Hz	208/230-60	208/230-60	208/230-60	208/230-60
Minimum Circuit Ampacity ²	15.8	20.3	27.7	37.2
Max. Overcurrent Protection ³	25	35	45	60
Min / Max Volts	197/253	197/253	197/253	197/253
Power Supply Conduit Size	1/2" or 3/4"	1/2" or 3/4"	1/2" or 3/4"	1/2" or 3/4"
EQUIPMENT WEIGHT				
	190	233	305	309
SHIP WEIGHT (LBS)				
	208	255	327	331

¹ Tested and rated in accordance with AHRI Standard 210/240

² Wire size should be determined in accordance with National Electrical Codes; extensive wire runs will require larger wire sizes

³ Must use time-delay fuses or HACR-type circuit breakers of the same size as noted.

NOTES

- Always check the rating plate for electrical data on the unit being installed.
- Installer will need to supply 7/8" to 1 1/8" adapters for suction line connections.
- Unit is charged with refrigerant for 15' of 3/8" liquid line. System charge must be adjusted per Installation Instructions Final Charge Procedure.
- Installation of these units requires the specified TXV Kit to be installed on the indoor coil. THE SPECIFIED TXV IS DETERMINED BY THE OUTDOOR UNIT NOT THE INDOOR COIL.

COOLING DATA — DSZC160241A* / CA*F3636*6** + TXV / MBVC1600** -1 — LOW STAGE

		OUTDOOR AMBIENT TEMPERATURE																ENTERING INDOOR WET BULB TEMPERATURE															
		65°F				75°F				85°F				95°F				105°F				115°F											
IDB	AIRFLOW	59	63	67	71	59	63	67	71	59	63	67	71	59	63	67	71	59	63	67	71	59	63	67	71								
731	MBh	17.7	18.3	20.1	-	17.3	17.9	19.6	-	16.9	17.5	19.2	-	16.5	17.1	18.7	-	15.6	16.2	17.8	-	14.5	15.0	16.5	-								
	S/T	0.79	0.66	0.46	-	0.82	0.68	0.47	-	0.84	0.70	0.48	-	0.86	0.72	0.50	-	0.90	0.75	0.52	-	0.90	0.76	0.52	-								
	ΔT	18	15	12	-	18	15	12	-	18	15	12	-	18	15	12	-	18	15	12	-	16	14	11	-								
	kW	1.06	1.09	1.12	-	1.15	1.17	1.21	-	1.22	1.25	1.29	-	1.29	1.32	1.36	-	1.34	1.37	1.42	-	1.39	1.42	1.47	-								
	Amps	4.2	4.3	4.4	-	4.5	4.6	4.8	-	4.9	5.0	5.2	-	5.2	5.3	5.5	-	5.6	5.7	5.9	-	5.9	6.0	6.2	-								
	Hi PR	209	225	237	-	235	252	266	-	267	287	303	-	304	327	345	-	342	368	388	-	378	406	429	-								
Lo PR	113	121	132	-	120	127	139	-	124	132	144	-	131	139	152	-	137	146	159	-	142	151	164	-									
70	MBh	17.2	17.8	19.5	-	16.8	17.4	19.1	-	16.4	17.0	18.6	-	16.0	16.6	18.2	-	15.2	15.7	17.2	-	14.1	14.6	16.0	-								
	S/T	0.75	0.63	0.43	-	0.78	0.65	0.45	-	0.80	0.67	0.46	-	0.82	0.69	0.48	-	0.86	0.71	0.50	-	0.86	0.72	0.50	-								
	ΔT	19	16	12	-	19	16	12	-	19	16	12	-	19	16	12	-	19	16	12	-	18	15	12	-								
	kW	1.06	1.08	1.11	-	1.14	1.16	1.20	-	1.21	1.24	1.28	-	1.28	1.31	1.35	-	1.33	1.36	1.41	-	1.38	1.41	1.46	-								
	Amps	4.1	4.2	4.4	-	4.5	4.6	4.7	-	4.8	5.0	5.1	-	5.2	5.3	5.5	-	5.5	5.6	5.8	-	5.8	6.0	6.2	-								
	Hi PR	207	223	235	-	232	250	264	-	264	284	300	-	301	324	342	-	338	364	384	-	374	402	425	-								
Lo PR	112	119	130	-	118	126	138	-	123	131	143	-	129	138	150	-	136	144	157	-	140	149	163	-									
569	MBh	16.3	16.9	18.5	-	15.9	16.5	18.1	-	15.6	16.1	17.7	-	15.2	15.7	17.2	-	14.4	15.0	16.4	-	13.4	13.9	15.2	-								
	S/T	0.72	0.60	0.42	-	0.75	0.62	0.43	-	0.77	0.64	0.44	-	0.79	0.66	0.46	-	0.82	0.68	0.47	-	0.83	0.69	0.48	-								
	ΔT	19	16	12	-	19	17	13	-	19	17	13	-	19	17	13	-	19	17	13	-	18	15	12	-								
	kW	1.04	1.06	1.10	-	1.12	1.14	1.18	-	1.19	1.22	1.26	-	1.26	1.28	1.33	-	1.31	1.34	1.38	-	1.36	1.39	1.43	-								
	Amps	4.1	4.2	4.3	-	4.4	4.5	4.6	-	4.8	4.9	5.0	-	5.1	5.2	5.4	-	5.4	5.5	5.7	-	5.7	5.9	6.1	-								
	Hi PR	203	218	230	-	228	245	259	-	259	278	294	-	295	317	335	-	332	357	377	-	366	394	416	-								
Lo PR	110	117	128	-	116	124	135	-	121	128	140	-	127	135	147	-	133	141	154	-	137	146	160	-									
731	MBh	18.0	18.5	20.1	21.5	17.6	18.1	19.6	21.0	17.2	17.7	19.1	20.5	16.7	17.2	18.7	20.0	15.9	16.4	17.7	19.0	14.7	15.2	16.4	17.6								
	S/T	0.90	0.80	0.61	0.39	0.93	0.83	0.63	0.40	0.95	0.85	0.64	0.41	0.98	0.88	0.67	0.43	1.00	0.91	0.69	0.44	1.00	0.92	0.70	0.45								
	ΔT	20	19	15	11	21	19	15	11	21	19	15	11	21	19	16	11	20	19	15	11	19	18	14	10								
	kW	1.07	1.10	1.13	1.17	1.16	1.18	1.22	1.26	1.23	1.26	1.30	1.35	1.30	1.33	1.37	1.42	1.36	1.39	1.43	1.48	1.40	1.44	1.48	1.54								
	Amps	4.2	4.3	4.5	4.6	4.6	4.7	4.8	5.0	4.9	5.1	5.2	5.4	5.3	5.4	5.6	5.8	5.6	5.7	5.9	6.2	5.9	6.1	6.3	6.5								
	Hi PR	211	227	240	250	237	255	269	281	269	290	306	319	307	330	349	364	345	372	392	409	381	410	433	452								
Lo PR	114	122	133	142	121	129	140	150	126	134	146	155	132	140	153	163	138	147	161	171	143	152	166	177									
637	MBh	17.5	18.0	19.5	20.9	17.1	17.6	19.0	20.4	16.7	17.2	18.6	19.9	16.3	16.7	18.1	19.4	15.4	15.9	17.2	18.5	14.3	14.7	15.9	17.1								
	S/T	0.85	0.76	0.58	0.37	0.89	0.79	0.60	0.39	0.91	0.81	0.61	0.40	0.94	0.84	0.63	0.41	0.97	0.87	0.66	0.42	0.98	0.88	0.66	0.43								
	ΔT	22	20	16	11	22	20	16	11	22	20	16	11	22	20	17	11	22	20	16	11	20	19	15	11								
	kW	1.06	1.09	1.12	1.16	1.15	1.17	1.21	1.25	1.22	1.25	1.29	1.34	1.29	1.32	1.36	1.41	1.34	1.37	1.42	1.47	1.39	1.42	1.47	1.52								
	Amps	4.2	4.3	4.4	4.6	4.5	4.6	4.8	4.9	4.9	5.0	5.2	5.4	5.2	5.3	5.5	5.7	5.6	5.7	5.9	6.1	5.9	6.0	6.2	6.5								
	Hi PR	209	225	238	248	235	252	267	278	267	287	303	316	304	327	345	360	342	368	388	405	378	406	429	448								
Lo PR	113	121	132	140	120	127	139	148	124	132	144	154	131	139	152	162	137	146	159	169	142	151	165	175									
569	MBh	16.6	17.1	18.5	19.9	16.2	16.7	18.1	19.4	15.8	16.3	17.6	18.9	15.4	15.9	17.2	18.5	14.7	15.1	16.3	17.5	13.6	14.0	15.1	16.3								
	S/T	0.82	0.73	0.55	0.36	0.85	0.76	0.57	0.37	0.87	0.78	0.59	0.38	0.90	0.80	0.61	0.39	0.93	0.83	0.63	0.41	0.94	0.84	0.64	0.41								
	ΔT	22	20	17	11	22	20	17	12	22	20	17	12	22	21	17	12	22	20	17	12	21	19	16	11								
	kW	1.05	1.07	1.10	1.14	1.13	1.15	1.19	1.23	1.20	1.23	1.27	1.31	1.27	1.29	1.34	1.38	1.32	1.35	1.40	1.44	1.37	1.40	1.45	1.50								
	Amps	4.1	4.2	4.3	4.5	4.4	4.5	4.7	4.9	4.8	4.9	5.1	5.3	5.1	5.3	5.4	5.6	5.5	5.6	5.8	6.0	5.8	5.9	6.1	6.3								
	Hi PR	205	220	233	243	230	247	261	272	261	281	297	310	298	320	338	353	335	360	381	397	370	398	421	439								
Lo PR	111	118	129	137	117	125	136	145	122	130	142	151	128	136	149	158	134	143	156	166	139	148	161	172									

Shaded area reflects ACCA (TVA) conditions

IDB: Entering Indoor Dry Bulb Temperature
High and low pressures are measured at the liquid and suction service valves.

kW = Total system power
Amps = outdoor unit amps (compressor + fan)

COOLING DATA — DSZC160241A* / CA*F3636*6** + TXV / MBVC1600** -1 — LOW STAGE (CONT.)

IDB	AIRFLOW	65°F						75°F						85°F						95°F						105°F						115°F																																	
		OUTDOOR AMBIENT TEMPERATURE												ENTERING INDOOR WET BULB TEMPERATURE																																																			
		59	63	67	71	75	79	83	87	91	95	99	103	59	63	67	71	75	79	83	87	91	95	99	103	59	63	67	71	75	79	83	87	91	95	99	103	59	63	67	71	75	79	83	87	91	95	99	103	59	63	67	71	75	79	83	87	91	95	99	103				
731	MBh	18.3	18.7	19.4	20.0	21.4	17.9	18.3	19.5	20.9	17.5	17.8	19.1	20.4	17.0	17.4	18.6	19.9	16.2	16.5	17.7	18.9	16.2	16.5	17.7	18.9	16.2	16.5	17.7	18.9	16.2	16.5	17.7	18.9	16.2	16.5	17.7	18.9	16.2	16.5	17.7	18.9	16.2	16.5	17.7	18.9	16.2	16.5	17.7	18.9	16.2	16.5	17.7	18.9	15.0	15.3	16.4	17.5							
	S/T	1.00	0.92	0.75	0.56	1.00	0.95	0.78	0.58	1.00	0.90	0.80	0.60	1.00	1.00	0.82	0.61	1.00	1.00	0.85	0.64	1.00	1.00	0.85	0.64	1.00	1.00	0.85	0.64	1.00	1.00	0.85	0.64	1.00	1.00	0.85	0.64	1.00	1.00	0.85	0.64	1.00	1.00	0.85	0.64	1.00	1.00	0.85	0.64	1.00	1.00	0.85	0.64	1.00	1.00	0.85	0.64	1.00	1.00	0.85	0.64	1.00	1.00	0.85	0.64
	ΔT	23	22	19	15	11	22	22	19	15	11	22	22	19	15	11	22	22	19	15	11	20	21	19	15	20	21	19	15	20	21	19	15	20	21	19	15	20	21	19	15	20	21	19	15	20	21	19	15	20	21	19	15	19	19	18	14								
	kW	1.08	1.11	1.14	1.18	1.17	1.19	1.23	1.27	1.24	1.27	1.31	1.36	1.31	1.34	1.38	1.43	1.37	1.40	1.45	1.50	1.37	1.40	1.45	1.50	1.37	1.40	1.45	1.50	1.37	1.40	1.45	1.50	1.37	1.40	1.45	1.50	1.37	1.40	1.45	1.50	1.37	1.40	1.45	1.50	1.37	1.40	1.45	1.50	1.42	1.45	1.50	1.55												
	Amps	4.3	4.4	4.5	4.7	4.6	4.7	4.9	5.0	5.0	5.1	5.3	5.5	5.3	5.4	5.6	5.8	5.7	5.8	6.0	6.2	5.7	5.8	6.0	6.2	5.7	5.8	6.0	6.2	5.7	5.8	6.0	6.2	5.7	5.8	6.0	6.2	5.7	5.8	6.0	6.2	5.7	5.8	6.0	6.2	5.7	5.8	6.0	6.2	6.0	6.1	6.3	6.6												
Hi PR	213	229	242	253	239	258	272	284	272	293	309	323	310	334	352	367	349	375	396	413	349	375	396	413	349	375	396	413	349	375	396	413	349	375	396	413	349	375	396	413	349	375	396	413	385	415	438	457																	
Lo PR	116	123	134	143	122	130	142	151	127	135	147	157	133	142	155	165	140	149	162	173	140	149	162	173	140	149	162	173	140	149	162	173	140	149	162	173	140	149	162	173	145	154	168	179																					
80	MBh	17.8	18.2	19.4	20.8	17.4	17.8	19.0	20.3	17.0	17.3	18.5	19.8	16.5	16.9	18.1	19.3	15.7	16.1	17.2	18.3	15.7	16.1	17.2	18.3	15.7	16.1	17.2	18.3	15.7	16.1	17.2	18.3	15.7	16.1	17.2	18.3	15.7	16.1	17.2	18.3	15.7	16.1	17.2	18.3	14.6	14.9	15.9	17.0																
	S/T	0.94	0.88	0.72	0.53	0.97	0.91	0.74	0.55	1.00	0.93	0.76	0.57	1.00	0.96	0.78	0.59	1.00	1.00	0.81	0.61	1.00	1.00	0.81	0.61	1.00	1.00	0.81	0.61	1.00	1.00	0.81	0.61	1.00	1.00	0.81	0.61	1.00	1.00	0.81	0.61	1.00	1.00	0.81	0.61	1.00	1.00	0.81	0.61	1.00	1.00	0.81	0.61												
	ΔT	24	23	20	16	24	23	20	16	24	23	20	16	24	24	20	16	23	23	23	20	23	23	23	20	23	23	23	20	23	23	23	20	23	23	23	20	21	21	19	15																								
	kW	1.07	1.10	1.13	1.17	1.16	1.18	1.22	1.26	1.23	1.26	1.30	1.35	1.30	1.33	1.37	1.42	1.36	1.39	1.43	1.48	1.36	1.39	1.43	1.48	1.36	1.39	1.43	1.48	1.36	1.39	1.43	1.48	1.36	1.39	1.43	1.48	1.36	1.39	1.43	1.48	1.40	1.44	1.48	1.54																				
	Amps	4.2	4.3	4.5	4.6	4.6	4.7	4.8	5.0	4.9	5.1	5.2	5.4	5.3	5.4	5.6	5.8	5.6	5.7	5.9	6.2	5.6	5.7	5.9	6.2	5.6	5.7	5.9	6.2	5.6	5.7	5.9	6.2	5.6	5.7	5.9	6.2	5.9	6.1	6.3	6.5																								
Hi PR	211	227	240	250	237	255	269	281	269	290	306	319	307	330	349	364	345	372	392	409	345	372	392	409	345	372	392	409	345	372	392	409	345	372	392	409	381	411	433	452																									
Lo PR	114	122	133	142	121	129	140	150	126	134	146	155	132	140	153	163	138	147	161	171	138	147	161	171	138	147	161	171	138	147	161	171	143	152	166	177																													
569	MBh	16.9	17.3	18.4	19.7	16.5	16.9	18.0	19.3	16.1	16.5	17.6	18.8	15.7	16.1	17.2	18.3	14.9	15.3	16.3	17.4	14.9	15.3	16.3	17.4	14.9	15.3	16.3	17.4	14.9	15.3	16.3	17.4	14.9	15.3	16.3	17.4	14.9	15.3	16.3	17.4	13.8	14.1	15.1	16.1																				
	S/T	0.90	0.84	0.69	0.51	0.93	0.87	0.71	0.53	0.95	0.89	0.73	0.54	0.98	0.92	0.75	0.56	1.02	0.96	0.78	0.58	1.02	0.96	0.78	0.58	1.02	0.96	0.78	0.58	1.02	0.96	0.78	0.58	1.03	0.97	0.79	0.59																												
	ΔT	25	23	20	16	25	24	21	17	25	24	21	17	25	24	21	17	25	24	21	16	25	24	21	16	25	24	21	16	25	24	21	16	23	22	19	15																												
	kW	1.06	1.08	1.11	1.15	1.14	1.16	1.20	1.24	1.21	1.24	1.28	1.32	1.28	1.31	1.35	1.40	1.33	1.36	1.41	1.46	1.33	1.36	1.41	1.46	1.33	1.36	1.41	1.46	1.33	1.36	1.41	1.46	1.38	1.41	1.46	1.51																												
	Amps	4.1	4.2	4.4	4.5	4.5	4.6	4.7	4.9	4.8	5.0	5.1	5.3	5.2	5.3	5.5	5.7	5.5	5.6	5.8	6.0	5.5	5.6	5.8	6.0	5.5	5.6	5.8	6.0	5.5	5.6	5.8	6.0	5.8	6.0	6.2	6.4																												
Hi PR	207	223	235	245	232	250	264	275	264	284	300	313	301	324	342	356	338	364	384	401	338	364	384	401	338	364	384	401	338	364	384	401	374	402	425	443																													
Lo PR	112	119	130	139	118	126	138	147	123	131	143	152	129	138	150	160	136	144	157	168	136	144	157	168	136	144	157	168	136	144	157	168	140	149	163	173																													
731	MBh	18.6	19.0	19.9	21.2	18.2	18.6	19.4	20.7	17.8	18.1	19.0	20.2	17.3	17.7	18.5	19.7	16.5	16.8	17.6	18.8	16.5	16.8	17.6	18.8	16.5	16.8	17.6	18.8	16.5	16.8	17.6	18.8	16.5	16.8	17.6	18.8	16.5	16.8	17.6	18.8	15.3	15.6	16.3	17.4																				
	S/T	1.00	0.99	0.90	0.73	1.00	0.98	0.89	0.72	1.00	0.99	0.91	0.74	1.00	1.00	0.98	0.80	1.00	1.00	0.83	0.61	1.00	1.00	0.83	0.61	1.00	1.00	0.83	0.61	1.00	1.00	0.83	0.61	1.00	1.00	0.83	0.61	1.00	1.00	0.83	0.61	1.00	1.00	0.83	0.61																				
	ΔT	23	24	22	19	23	23	23	20	22	23	23	20	22	22	23	20	21	21	22	20	21	21	22	20	21	21	22	20	21	21	22	20	21	21	22	20	19	20	20	18																								
	kW	1.09	1.11	1.15	1.19	1.18	1.20	1.24	1.29	1.25	1.28	1.32	1.37	1.32	1.35	1.40	1.44	1.38	1.41	1.46	1.51	1.38	1.41	1.46	1.51	1.38	1.41	1.46	1.51	1.38	1.41	1.46	1.51	1.43	1.46	1.51	1.56																												
	Amps	4.3	4.4	4.5	4.7	4.6	4.7	4.9	5.1	5.0	5.1	5.3	5.5	5.4	5.5	5.7	5.9	5.7	5.8	6.0	6.3	5.7	5.8	6.0	6.3	5.7	5.8	6.0	6.3	5.7	5.8	6.0	6.3	6.0	6.2	6.4	6.6																												
Hi PR	215	232	245	255	242	260	275	286	275	296	312	326	313	337	356	371	352	379	400	417	352	379	400	417	352	379	400	417	352	379	400	417	389	419	442	461																													
Lo PR	117	124	136	144	123	131	143	153	128	136	149	159	135	143	156	167	141	150	164	175	141	150	164	175	141	150	164	175	141	150	164	175	146	155	170	181																													
637	MBh	18.1	18.4	19.3	20.6	17.7	18.0	18.9	20.1	17.3	17.6	18.4	19.7	16.8	17.2	18.0	19.2	16.0	16.3	17.1	18.2	16.0	16.3	17.1	18.2	16.0	16.3	17.1	18.2	16.0	16.3	17.1	18.2	16.0	16.3	17.1	18.2	14.8	15.1	15.8	16.9																								
	S/T	0.98	0.95	0.86	0.69	1.00	0.98	0.89	0.72	1.00	0.98	0.91	0.74	1.00	1.00	0.98	0.76	1.00	1.00	0.97	0.79	1.00	1.00	0.97	0.79	1.00	1.00	0.97	0.79	1.00	1.00	0.97	0.79	1.00	1.00	0.98	0.80																												
	ΔT	26	25	24	21	26	26	24	21	25	25	24	21	24	25	24	21	23	24	24	21																																												

COOLING DATA — DSZC160241A* / CA*F3636*6** + TXV / MBVC1600**-1 — HIGH STAGE

IDB	AIRFLOW	OUTDOOR AMBIENT TEMPERATURE												ENTERING INDOOR WET BULB TEMPERATURE												115°F											
		65°F				75°F				85°F				95°F				105°F				115°F															
		59	63	67	71	59	63	67	71	59	63	67	71	59	63	67	71	59	63	67	71	59	63	67	71												
70	984	MBh	23.5	24.4	26.7	-	23.0	23.8	26.1	-	22.4	23.2	25.5	-	21.9	22.7	24.8	-	20.8	21.5	23.6	-	19.3	20.0	21.9	-											
		S/T	0.80	0.66	0.46	-	0.82	0.69	0.48	-	0.85	0.71	0.49	-	0.87	0.73	0.51	-	0.91	0.76	0.52	-	0.91	0.76	0.53	-											
	875	ΔT	17	15	11	-	18	15	12	-	18	15	12	-	18	15	12	-	18	15	12	-	16	14	11	-											
		kW	1.56	1.60	1.65	-	1.68	1.72	1.78	-	1.79	1.83	1.90	-	1.89	1.93	2.00	-	1.97	2.02	2.09	-	2.04	2.09	2.16	-											
	766	Amps	6.0	6.1	6.3	-	6.5	6.6	6.8	-	7.0	7.2	7.4	-	7.5	7.7	7.9	-	8.0	8.2	8.5	-	8.5	8.7	9.0	-											
		Hi PR	223	240	253	-	250	269	284	-	284	306	323	-	324	349	368	-	365	392	414	-	403	433	458	-											
	984	Lo PR	111	118	129	-	117	125	136	-	122	130	142	-	128	136	149	-	134	143	156	-	139	148	161	-											
		MBh	22.8	23.7	25.9	-	22.3	23.1	25.3	-	21.8	22.6	24.7	-	21.2	22.0	24.1	-	20.2	20.9	22.9	-	18.7	19.4	21.2	-											
	875	S/T	0.76	0.63	0.44	-	0.79	0.66	0.46	-	0.81	0.67	0.47	-	0.83	0.70	0.48	-	0.86	0.72	0.50	-	0.87	0.73	0.50	-											
		ΔT	18	16	12	-	18	16	12	-	18	16	12	-	19	16	12	-	18	16	12	-	17	15	11	-											
766	kW	1.55	1.58	1.63	-	1.67	1.71	1.76	-	1.78	1.82	1.88	-	1.87	1.92	1.98	-	1.96	2.00	2.07	-	2.03	2.07	2.14	-												
	Amps	5.9	6.1	6.3	-	6.4	6.6	6.8	-	7.0	7.1	7.4	-	7.4	7.6	7.9	-	7.9	8.1	8.4	-	8.4	8.6	8.9	-												
984	Hi PR	221	238	251	-	248	267	281	-	282	303	320	-	321	345	365	-	361	388	410	-	399	429	453	-												
	Lo PR	110	117	128	-	116	124	135	-	121	128	140	-	127	135	147	-	133	141	154	-	137	146	160	-												
875	MBh	21.1	21.8	23.9	-	20.6	21.3	23.4	-	20.1	20.8	22.8	-	19.6	20.3	22.3	-	18.6	19.3	21.1	-	17.3	17.9	19.6	-												
	S/T	0.73	0.61	0.42	-	0.76	0.63	0.44	-	0.78	0.65	0.45	-	0.80	0.67	0.46	-	0.83	0.70	0.48	-	0.84	0.70	0.49	-												
766	ΔT	19	16	12	-	19	16	12	-	19	16	12	-	19	16	12	-	19	16	12	-	17	15	11	-												
	kW	1.51	1.54	1.59	-	1.63	1.67	1.72	-	1.73	1.77	1.83	-	1.83	1.87	1.93	-	1.91	1.95	2.01	-	1.97	2.02	2.09	-												
984	Amps	5.8	5.9	6.1	-	6.2	6.4	6.6	-	6.8	6.9	7.2	-	7.2	7.4	7.6	-	7.7	7.9	8.1	-	8.1	8.3	8.6	-												
	Hi PR	214	230	243	-	240	259	273	-	273	294	310	-	311	335	354	-	350	377	398	-	387	416	440	-												
766	Lo PR	107	113	124	-	113	120	131	-	117	125	136	-	123	131	143	-	129	137	150	-	133	142	155	-												
	75	984	MBh	23.9	24.6	26.7	28.6	23.4	24.1	26.0	27.9	22.8	23.5	25.4	27.3	22.2	22.9	24.8	26.6	21.1	21.8	23.6	25.3	19.6	20.2	21.8	23.4										
S/T			0.90	0.81	0.61	0.39	0.94	0.84	0.63	0.41	0.96	0.86	0.65	0.42	0.99	0.89	0.67	0.43	1.00	0.92	0.70	0.45	1.00	0.93	0.70	0.45											
875		ΔT	20	19	15	11	20	19	15	11	20	19	15	11	21	19	16	11	21	20	19	15	11	18	17	14	10										
		kW	1.57	1.61	1.66	1.72	1.70	1.74	1.79	1.85	1.81	1.85	1.91	1.98	1.91	1.95	2.02	2.08	2.15	1.99	2.03	2.10	2.18	2.06	2.11	2.18	2.26										
984		Amps	6.0	6.2	6.4	6.6	6.5	6.7	6.9	7.2	7.1	7.3	7.5	7.8	7.6	7.8	8.0	8.3	8.1	8.3	8.5	8.9	8.5	8.5	8.7	9.0	9.4										
		Hi PR	225	242	256	267	253	272	287	300	287	309	327	341	327	352	372	388	368	396	418	436	407	438	462	482											
875		Lo PR	112	119	130	139	119	126	138	147	123	131	143	152	129	138	150	160	136	144	157	168	140	149	163	173											
		MBh	23.2	23.9	25.9	27.8	22.7	23.4	25.3	27.1	22.1	22.8	24.7	26.5	21.6	22.2	24.1	25.8	20.5	21.1	22.9	24.5	19.0	19.6	21.2	22.7											
766		S/T	0.86	0.77	0.58	0.38	0.89	0.80	0.61	0.39	0.92	0.82	0.62	0.40	0.95	0.85	0.64	0.41	0.98	0.88	0.67	0.43	0.99	0.89	0.67	0.43											
		ΔT	21	19	16	11	21	20	16	11	21	20	16	11	21	20	16	11	21	20	16	11	20	18	15	10											
984	kW	1.56	1.60	1.65	1.70	1.68	1.72	1.78	1.84	1.79	1.83	1.90	1.96	1.89	1.93	2.00	2.07	1.97	2.02	2.09	2.16	2.04	2.09	2.16	2.24												
	Amps	6.0	6.1	6.3	6.6	6.5	6.6	6.8	7.1	7.0	7.2	7.4	7.7	7.5	7.7	7.9	8.2	8.0	8.2	8.5	8.8	8.5	8.7	9.0	9.3												
875	Hi PR	223	240	253	264	250	269	284	297	285	306	323	337	324	349	368	384	365	392	414	432	403	434	458	477												
	Lo PR	111	118	129	137	117	125	136	145	122	130	142	151	128	136	149	158	134	143	156	166	139	148	161	172												
766	MBh	21.4	22.1	23.9	25.6	20.9	21.6	23.3	25.0	20.4	21.0	22.8	24.4	19.9	20.5	22.2	23.8	18.9	19.5	21.1	22.7	17.5	18.1	19.6	21.0												
	S/T	0.83	0.74	0.56	0.36	0.86	0.77	0.58	0.38	0.88	0.79	0.60	0.39	0.91	0.82	0.62	0.40	0.95	0.85	0.64	0.41	0.96	0.85	0.65	0.42												
984	ΔT	21	20	16	11	22	20	16	11	22	20	16	11	22	20	16	11	22	20	16	11	22	20	15	10												
	kW	1.52	1.56	1.61	1.66	1.64	1.68	1.73	1.79	1.75	1.79	1.85	1.91	1.84	1.88	1.95	2.01	1.92	1.97	2.03	2.10	1.99	2.04	2.10	2.18												
766	Amps	5.8	6.0	6.2	6.4	6.3	6.4	6.6	6.9	6.8	7.0	7.2	7.5	7.3	7.5	7.7	8.0	7.8	8.0	8.2	8.5	8.2	8.4	8.7	9.0												
	Hi PR	216	233	246	256	243	261	276	288	276	297	314	327	314	338	357	373	354	381	402	419	391	421	444	463												
984	Lo PR	108	115	125	133	114	121	132	141	118	126	137	146	124	132	144	154	130	139	151	161	135	143	156	167												

kW = Total system power
Amps = outdoor unit amps (compressor + fan)

Shaded area reflects ACCA (TVA) conditions

IDB: Entering Indoor Dry Bulb Temperature
High and low pressures are measured at the liquid and suction service valves.

COOLING DATA — DSZC160241A* / CA*F3636*6** + TXV / MBVC1600** -1 — HIGH STAGE

Table with columns for IDB, Airflow, and Outdoor Ambient Temperature (65°F to 115°F). Rows include data for models 984, 875, and 766. Shaded cells indicate specific data points.

Table with columns for IDB, Airflow, and Outdoor Ambient Temperature (65°F to 115°F). Rows include data for models 984, 875, and 766. Shaded cells indicate specific data points.

IDB: Entering Indoor Dry Bulb Temperature. High and low pressures are measured at the liquid and suction service valves. kW = Total system power. Amps = outdoor unit amps (compressor + fan). Shaded area reflects AHRI (TVA) conditions.

COOLING DATA — DSZC160361A* / CA*F3743*6** + TXV / MBVC1600**-1 — LOW STAGE

IDB	AIRFLOW	OUTDOOR AMBIENT TEMPERATURE												ENTERING INDOOR WET BULB TEMPERATURE											
		65°F				75°F				85°F				95°F				105°F				115°F			
		59	63	67	71	59	63	67	71	59	63	67	71	59	63	67	71	59	63	67	71	59	63	67	71
900	MBh	24.7	25.6	28.1	-	24.1	25.0	27.4	-	23.6	24.4	26.8	-	23.0	23.8	26.1	-	21.8	22.6	24.8	-	20.2	21.0	23.0	-
	S/T	0.75	0.62	0.43	-	0.77	0.65	0.45	-	0.79	0.66	0.46	-	0.82	0.68	0.47	-	0.85	0.71	0.49	-	0.86	0.72	0.50	-
	ΔT	19	16	12	-	19	17	13	-	19	17	13	-	19	17	13	-	19	16	12	-	18	15	12	-
	kW	1.44	1.48	1.52	-	1.56	1.59	1.64	-	1.66	1.69	1.75	-	1.74	1.78	1.84	-	1.82	1.86	1.92	-	1.88	1.93	1.99	-
	Amps	5.8	5.9	6.1	-	6.2	6.3	6.5	-	6.7	6.9	7.1	-	7.2	7.3	7.6	-	7.6	7.8	8.0	-	8.0	8.2	8.5	-
800	MBh	24.0	24.9	27.3	-	23.4	24.3	26.6	-	22.9	23.7	26.0	-	22.3	23.1	25.4	-	21.2	22.0	24.1	-	19.6	20.4	22.3	-
	S/T	0.71	0.59	0.41	-	0.74	0.62	0.43	-	0.76	0.63	0.44	-	0.78	0.65	0.45	-	0.81	0.68	0.47	-	0.82	0.68	0.47	-
	ΔT	20	17	13	-	20	17	13	-	20	17	13	-	20	17	13	-	20	17	13	-	18	16	12	-
	kW	1.43	1.46	1.51	-	1.54	1.58	1.63	-	1.64	1.68	1.73	-	1.73	1.77	1.83	-	1.80	1.84	1.91	-	1.87	1.91	1.97	-
	Amps	5.7	5.8	6.0	-	6.2	6.3	6.5	-	6.7	6.8	7.0	-	7.1	7.3	7.5	-	7.5	7.7	8.0	-	8.0	8.1	8.4	-
700	MBh	22.2	23.0	25.2	-	21.6	22.4	24.6	-	21.1	21.9	24.0	-	20.6	21.4	23.4	-	19.6	20.3	22.2	-	18.1	18.8	20.6	-
	S/T	0.69	0.57	0.40	-	0.71	0.59	0.41	-	0.73	0.61	0.42	-	0.75	0.63	0.44	-	0.78	0.65	0.45	-	0.79	0.66	0.46	-
	ΔT	20	17	13	-	20	18	13	-	20	18	13	-	20	18	13	-	20	17	13	-	19	16	12	-
	kW	1.40	1.43	1.47	-	1.51	1.54	1.59	-	1.60	1.64	1.69	-	1.69	1.72	1.78	-	1.76	1.80	1.86	-	1.82	1.86	1.92	-
	Amps	5.6	5.7	5.9	-	6.0	6.1	6.3	-	6.5	6.6	6.8	-	6.9	7.1	7.3	-	7.3	7.5	7.7	-	7.7	7.9	8.2	-
900	MBh	24.4	25.1	27.2	29.2	23.8	24.5	26.6	28.5	23.3	24.0	25.9	27.8	22.7	23.4	25.3	27.2	22.2	22.9	24.8	26.6	20.6	21.2	22.9	24.6
	S/T	0.81	0.72	0.55	0.35	0.84	0.75	0.57	0.37	0.86	0.77	0.58	0.37	0.89	0.79	0.60	0.39	0.92	0.82	0.62	0.40	0.93	0.83	0.63	0.40
	ΔT	23	21	17	12	23	21	17	12	23	21	17	12	23	21	17	12	23	21	17	12	21	20	16	11
	kW	1.44	1.48	1.52	1.57	1.56	1.59	1.64	1.70	1.66	1.69	1.75	1.81	1.74	1.78	1.84	1.90	1.82	1.86	1.92	1.99	1.88	1.93	1.99	2.06
	Amps	5.8	5.9	6.1	6.3	6.2	6.3	6.5	6.8	6.7	6.9	7.1	7.3	7.2	7.3	7.6	7.8	7.6	7.8	8.0	8.3	8.0	8.2	8.5	8.8
800	MBh	22.5	23.2	25.1	26.9	22.0	22.7	24.5	26.3	21.5	22.1	23.9	25.7	21.0	21.6	23.4	25.1	19.9	20.5	22.2	23.8	18.4	19.0	20.6	22.1
	S/T	0.78	0.70	0.53	0.34	0.81	0.72	0.55	0.35	0.83	0.74	0.56	0.36	0.86	0.77	0.58	0.37	0.89	0.79	0.60	0.39	0.90	0.80	0.61	0.39
	ΔT	23	21	17	12	23	22	18	12	23	22	18	12	24	22	18	12	23	21	18	12	22	20	16	11
	kW	1.41	1.44	1.49	1.53	1.52	1.55	1.60	1.65	1.62	1.65	1.70	1.76	1.70	1.74	1.80	1.86	1.77	1.81	1.87	1.94	1.83	1.88	1.94	2.01
	Amps	5.6	5.7	5.9	6.1	6.0	6.2	6.4	6.6	6.5	6.7	6.9	7.2	7.0	7.1	7.4	7.6	7.4	7.6	7.8	8.1	7.8	8.0	8.3	8.6
700	MBh	20.1	21.7	22.9	23.9	22.6	24.3	25.7	26.8	25.7	27.6	29.2	30.4	29.3	31.5	33.2	34.7	32.9	35.4	37.4	39.0	36.4	39.1	41.3	43.1
	S/T	0.69	0.62	0.50	0.40	0.72	0.65	0.54	0.44	0.75	0.68	0.57	0.47	0.78	0.71	0.60	0.50	0.81	0.74	0.63	0.53	0.84	0.77	0.66	0.56
	ΔT	20	18	15	12	20	19	16	12	20	19	16	12	20	19	16	12	20	19	16	12	19	17	14	11
	kW	1.38	1.41	1.44	1.47	1.47	1.50	1.53	1.56	1.56	1.59	1.62	1.65	1.65	1.68	1.71	1.74	1.74	1.77	1.80	1.83	1.83	1.86	1.89	1.92
	Amps	5.5	5.6	5.7	5.8	5.9	6.0	6.1	6.2	6.2	6.3	6.4	6.5	6.5	6.6	6.7	6.8	6.8	6.9	7.0	7.1	7.1	7.2	7.3	7.4

IDB: Entering Indoor Dry Bulb Temperature
 High and low pressures are measured at the liquid and suction service valves.
 Shaded area reflects ACCA (TVA) conditions
 kW = Total system power
 Amps = outdoor unit amps (compressor + fan)

COOLING DATA — DSZC160361A* / CA*F3743*6** + TXV / MBVC1600**-1 — LOW STAGE

IDB	AIRFLOW	OUTDOOR AMBIENT TEMPERATURE															115°F													
		65°F					75°F					85°F						95°F					105°F							
		59	63	67	71	75	59	63	67	71	75	59	63	67	71	75		59	63	67	71	75	59	63	67	71	75			
80	900	MBh	25.6	26.1	27.9	29.9	25.0	25.5	27.3	29.2	24.4	24.9	26.6	28.5	23.8	24.3	26.0	27.8	22.6	23.1	24.7	26.4	20.9	21.4	22.9	24.4	20.9	21.4	22.9	24.4
		S/T	0.93	0.87	0.71	0.53	0.96	0.90	0.74	0.55	1.00	0.93	0.75	0.56	1.00	0.96	0.78	0.58	1.00	1.00	0.81	0.60	1.00	1.00	0.82	0.61	1.00	1.00	0.82	0.61
	ΔT	24	23	20	16	25	24	21	16	25	24	21	16	24	24	21	17	23	24	20	16	21	22	19	15	21	22	19	15	
	kW	1.47	1.50	1.55	1.60	1.58	1.62	1.67	1.73	1.68	1.72	1.78	1.84	1.77	1.81	1.87	1.94	1.85	1.89	1.95	2.02	1.92	1.96	2.02	2.09	1.92	1.96	2.02	2.09	
	Amps	5.9	6.0	6.2	6.4	6.3	6.5	6.7	6.9	6.8	7.0	7.2	7.5	7.3	7.5	7.7	8.0	7.7	7.9	8.2	8.5	8.2	8.4	8.6	9.0	8.2	8.4	8.6	9.0	
	Hi PR	212	228	241	251	238	256	270	282	270	291	307	320	308	331	350	365	346	372	393	410	382	412	435	453	382	412	435	453	
	Lo PR	113	120	131	140	119	127	139	148	124	132	144	154	130	139	151	161	137	145	159	169	141	150	164	175	141	150	164	175	
	80	800	MBh	24.8	25.4	27.1	29.0	24.3	24.8	26.5	28.3	23.7	24.2	25.9	27.6	23.1	23.6	25.2	27.0	22.0	22.4	24.0	25.6	20.3	20.8	22.2	23.7	20.3	20.8	22.2
S/T			0.89	0.83	0.68	0.51	0.92	0.86	0.70	0.52	0.94	0.88	0.72	0.54	0.97	0.91	0.74	0.56	1.00	0.95	0.77	0.58	0.98	0.92	0.75	0.56	0.98	0.92	0.75	0.56
ΔT		25	24	21	17	26	25	21	17	26	25	21	17	26	25	22	17	25	24	21	17	23	23	20	16	23	23	20	16	
kW		1.46	1.49	1.54	1.59	1.57	1.60	1.66	1.71	1.67	1.71	1.76	1.82	1.76	1.80	1.86	1.92	1.83	1.88	1.94	2.00	1.90	1.94	2.01	2.08	1.90	1.94	2.01	2.08	
Amps		5.8	5.9	6.1	6.3	6.3	6.4	6.6	6.8	6.8	6.9	7.2	7.4	7.2	7.4	7.6	7.9	7.7	7.8	8.1	8.4	8.1	8.3	8.6	8.9	8.1	8.3	8.6	8.9	
Hi PR		210	226	238	248	235	253	267	279	267	288	304	317	305	328	346	361	343	369	389	406	379	407	430	449	379	407	430	449	
Lo PR		112	119	130	138	118	126	137	146	123	131	143	152	129	137	150	160	135	144	157	167	140	149	162	173	140	149	162	173	
700		700	MBh	22.9	23.4	25.0	26.8	22.4	22.9	24.5	26.1	21.9	22.3	23.9	25.5	21.3	21.8	23.3	24.9	20.3	20.7	22.1	23.7	18.8	19.2	20.5	21.9	18.8	19.2	20.5
	S/T		0.86	0.80	0.65	0.49	0.89	0.83	0.68	0.51	0.91	0.85	0.69	0.52	0.94	0.88	0.72	0.54	0.97	0.91	0.74	0.56	0.98	0.92	0.75	0.56	0.98	0.92	0.75	0.56
	ΔT	26	25	21	17	26	25	22	17	26	25	22	17	26	25	22	18	26	25	22	17	24	23	20	16	24	23	20	16	
	kW	1.42	1.45	1.50	1.55	1.53	1.56	1.62	1.67	1.63	1.66	1.72	1.78	1.71	1.75	1.81	1.87	1.79	1.83	1.89	1.95	1.85	1.89	1.96	2.02	1.85	1.89	1.96	2.02	
	Amps	5.7	5.8	6.0	6.2	6.1	6.2	6.4	6.7	6.6	6.8	7.0	7.2	7.0	7.2	7.4	7.7	7.5	7.6	7.9	8.2	7.9	8.1	8.3	8.6	7.9	8.1	8.3	8.6	
	Hi PR	203	219	231	241	228	245	259	270	259	279	295	307	295	318	336	350	332	358	378	394	367	395	417	435	367	395	417	435	
	Lo PR	109	115	126	134	115	122	133	142	119	127	138	147	125	133	145	155	131	140	152	162	136	144	158	168	136	144	158	168	
	85	900	MBh	26.0	26.5	27.8	29.7	25.4	25.9	27.2	29.0	24.8	25.3	26.5	28.3	24.2	24.7	25.9	27.6	23.0	23.5	24.6	26.2	21.3	21.7	22.8	24.3	21.3	21.7	22.8
S/T			0.98	0.94	0.85	0.69	1.00	0.98	0.88	0.71	1.00	1.00	0.90	0.73	1.00	1.00	0.93	0.76	1.00	1.00	0.97	0.78	1.00	1.00	0.98	0.79	1.00	1.00	0.98	0.79
ΔT		26	26	24	21	26	26	24	21	25	26	24	21	25	25	25	21	24	24	24	21	22	22	20	16	22	22	20	16	
kW		1.48	1.51	1.56	1.61	1.60	1.63	1.68	1.74	1.70	1.74	1.79	1.85	1.79	1.83	1.89	1.95	1.87	1.91	1.97	2.04	1.93	1.98	2.04	2.11	1.93	1.98	2.04	2.11	
Amps		5.9	6.1	6.2	6.5	6.4	6.5	6.7	7.0	6.9	7.1	7.3	7.5	7.3	7.5	7.8	8.0	7.8	8.0	8.2	8.5	8.2	8.4	8.7	9.0	8.2	8.4	8.7	9.0	
Hi PR		214	230	243	253	240	258	273	284	273	294	310	323	311	334	353	368	350	376	397	414	386	416	439	458	386	416	439	458	
Lo PR		114	121	133	141	121	128	140	149	125	133	146	155	132	140	153	163	138	147	160	171	143	152	166	177	143	152	166	177	
800		800	MBh	25.3	25.8	27.0	28.8	24.7	25.2	26.4	28.1	24.1	24.6	25.7	27.5	23.5	24.0	25.1	26.8	22.3	22.8	23.8	25.4	20.7	21.1	22.1	23.6	20.7	21.1	22.1
	S/T		0.93	0.90	0.81	0.66	0.96	0.93	0.84	0.68	0.99	0.95	0.86	0.70	1.00	0.98	0.89	0.72	1.00	1.00	0.92	0.75	1.00	1.00	0.93	0.75	1.00	1.00	0.93	0.75
	ΔT	27	27	25	22	27	27	25	22	27	27	25	22	27	27	26	22	26	26	25	22	24	24	24	20	24	24	24	20	
	kW	1.47	1.50	1.55	1.60	1.58	1.62	1.67	1.73	1.68	1.72	1.78	1.84	1.77	1.81	1.87	1.94	1.85	1.89	1.95	2.02	1.92	1.96	2.02	2.09	1.92	1.96	2.02	2.09	
	Amps	5.9	6.0	6.2	6.4	6.3	6.5	6.7	6.9	6.8	7.0	7.2	7.5	7.3	7.5	7.7	8.0	7.7	7.9	8.2	8.5	8.2	8.4	8.6	9.0	8.2	8.4	8.6	9.0	
	Hi PR	212	228	241	251	238	256	270	282	270	291	307	320	308	331	350	365	346	372	393	410	382	412	435	453	382	412	435	453	
	Lo PR	113	120	131	140	119	127	139	148	124	132	144	154	130	139	151	161	137	145	159	169	141	150	164	175	141	150	164	175	
	700	700	MBh	23.3	23.8	24.9	26.6	22.8	23.2	24.3	26.0	22.2	22.7	23.8	25.3	21.7	22.1	23.2	24.7	20.6	21.0	22.0	23.5	19.1	19.5	20.4	21.8	19.1	19.5	20.4
S/T			0.90	0.87	0.78	0.63	0.93	0.90	0.81	0.66	0.95	0.92	0.83	0.67	0.98	0.95	0.86	0.70	1.00	0.99	0.89	0.72	1.00	0.99	0.90	0.73	1.00	0.99	0.90	0.73
ΔT		27.5	27	26	22	28	27	26	22	28	27	26	22	28	28	26	23	27	27	26	22	25	25	24	21	25	25	24	21	
kW		1.43	1.46	1.51	1.56	1.54	1.58	1.63	1.68	1.64	1.68	1.73	1.79	1.73	1.77	1.83	1.89	1.80	1.84	1.90	1.97	1.87	1.91	1.97	2.04	1.87	1.91	1.97	2.04	
Amps		5.7	5.8	6.0	6.2	6.2	6.3	6.5	6.7	6.7	6.8	7.0	7.3	7.1	7.3	7.5	7.8	7.5	7.7	8.0	8.2	8.0	8.1	8.4	8.7	8.0	8.1	8.4	8.7	
Hi PR		205	221	233	243	230	248	262	273	262	282	298	311	298	321	339	354	336	361	382	398	371	399	422	440	371	399	422	440	
Lo PR		110	117	127	136	116	123	135	143	120	128	140	149	126	135	147	156	133	141	154	164	137	146	159	170	137	146	159	170	

Shaded area reflects AHRI (TVA) conditions
 kW = Total system power
 Amps = outdoor unit amps (compressor + fan)

COOLING DATA — DSZC160361A* / CA*F3743*6** + TXV / MBVC1600** -1 — HIGH STAGE

		OUTDOOR AMBIENT TEMPERATURE												ENTERING INDOOR WET BULB TEMPERATURE												
		65°F				75°F				85°F				95°F				105°F				115°F				
		59	63	67	71	59	63	67	71	59	63	67	71	59	63	67	71	59	63	67	71	59	63	67	71	
IDB	1294	MBh	33.9	35.1	38.5	-	33.1	34.3	37.6	-	32.3	33.5	36.7	-	31.5	32.7	35.8	-	30.0	31.1	34.0	-	27.8	28.8	31.5	-
		S/T	0.74	0.62	0.43	-	0.76	0.64	0.44	-	0.78	0.65	0.45	-	0.81	0.67	0.47	-	0.84	0.70	0.49	-	0.85	0.71	0.49	-
		ΔT	18	15	12	-	18	16	12	-	18	16	12	-	18	16	12	-	18	15	12	-	17	14	11	-
	70	kW	2.16	2.20	2.27	-	2.33	2.38	2.46	-	2.48	2.53	2.62	-	2.61	2.67	2.76	-	2.72	2.78	2.88	-	2.82	2.88	2.98	-
		Amps	8.3	8.5	8.8	-	9.0	9.2	9.5	-	9.7	10.0	10.3	-	10.4	10.7	11.0	-	11.1	11.3	11.7	-	11.7	12.0	12.4	-
		Hi PR	220	237	250	-	247	266	280	-	281	302	319	-	320	344	363	-	360	387	409	-	397	428	452	-
		Lo PR	108	114	125	-	114	121	132	-	118	126	137	-	124	132	144	-	130	138	151	-	135	143	156	-
	70	MBh	32.9	34.1	37.4	-	32.2	33.3	36.5	-	31.4	32.5	35.6	-	30.6	31.7	34.8	-	29.1	30.2	33.0	-	26.9	27.9	30.6	-
		S/T	0.70	0.59	0.41	-	0.73	0.61	0.42	-	0.75	0.62	0.43	-	0.77	0.64	0.45	-	0.80	0.67	0.46	-	0.81	0.67	0.47	-
		ΔT	18	16	12	-	19	16	12	-	19	16	12	-	19	16	12	-	19	16	12	-	17	15	11	-
kW		2.14	2.19	2.26	-	2.31	2.36	2.44	-	2.46	2.51	2.59	-	2.59	2.65	2.73	-	2.70	2.76	2.85	-	2.79	2.86	2.95	-	
1006	Amps	8.2	8.4	8.7	-	8.9	9.1	9.4	-	9.7	9.9	10.2	-	10.3	10.6	10.9	-	11.0	11.2	11.6	-	11.6	11.9	12.3	-	
	Hi PR	218	234	247	-	244	263	278	-	278	299	316	-	317	341	360	-	356	383	405	-	393	423	447	-	
	Lo PR	107	113	124	-	113	120	131	-	117	124	136	-	123	131	143	-	129	137	150	-	133	142	155	-	
	MBh	30.4	31.5	34.5	-	29.7	30.8	33.7	-	29.0	30.0	32.9	-	28.3	29.3	32.1	-	26.9	27.8	30.5	-	24.9	25.8	28.2	-	
75	S/T	0.68	0.57	0.39	-	0.70	0.59	0.41	-	0.72	0.60	0.42	-	0.74	0.62	0.43	-	0.77	0.64	0.45	-	0.78	0.65	0.45	-	
	ΔT	19	16	12	-	19	16	13	-	19	16	13	-	19	17	13	-	19	16	12	-	18	15	12	-	
	kW	2.09	2.13	2.20	-	2.25	2.30	2.37	-	2.39	2.45	2.53	-	2.52	2.58	2.66	-	2.63	2.69	2.78	-	2.72	2.78	2.88	-	
	Amps	8.0	8.2	8.5	-	8.7	8.9	9.1	-	9.4	9.6	9.9	-	10.0	10.3	10.6	-	10.7	10.9	11.3	-	11.3	11.6	12.0	-	
1294	Hi PR	222	239	253	263	249	268	283	296	284	305	322	336	323	348	367	383	363	391	413	431	401	432	456	476	
	Lo PR	109	116	126	134	115	122	133	142	119	127	139	148	125	133	146	155	131	140	153	163	136	145	158	168	
	MBh	33.5	34.5	37.3	40.0	32.7	33.7	36.4	39.1	31.9	32.9	35.6	38.2	31.1	32.1	34.7	37.2	29.6	30.5	33.0	35.4	27.4	28.2	30.5	32.8	
	S/T	0.80	0.71	0.54	0.35	0.83	0.74	0.56	0.36	0.85	0.76	0.57	0.37	0.88	0.78	0.59	0.38	0.91	0.81	0.62	0.40	0.92	0.82	0.62	0.40	
1150	ΔT	21	20	16	11	22	20	16	11	22	20	16	11	22	20	16	11	22	20	16	11	20	18	15	10	
	kW	2.16	2.20	2.28	2.35	2.33	2.38	2.46	2.54	2.48	2.53	2.62	2.70	2.61	2.67	2.76	2.85	2.72	2.78	2.88	2.98	2.82	2.88	2.98	3.08	
	Amps	8.3	8.5	8.8	9.1	9.0	9.2	9.5	9.8	9.7	10.0	10.3	10.7	10.4	10.7	11.0	11.4	11.1	11.3	11.7	12.2	11.7	12.0	12.4	12.9	
	Hi PR	220	237	250	261	247	266	281	293	281	302	319	333	320	344	363	379	360	387	409	426	397	428	452	471	
1006	Lo PR	108	115	125	133	114	121	132	141	118	126	137	146	124	132	144	154	130	138	151	161	135	143	156	166	
	MBh	30.9	31.8	34.4	37.0	30.2	31.1	33.6	36.1	29.5	30.3	32.8	35.2	28.7	29.6	32.0	34.4	27.3	28.1	30.4	32.7	25.3	26.0	28.2	30.3	
	S/T	0.77	0.69	0.52	0.34	0.80	0.71	0.54	0.35	0.82	0.73	0.55	0.36	0.84	0.76	0.57	0.37	0.88	0.78	0.59	0.38	0.88	0.79	0.60	0.39	
	ΔT	22	20	16	11	22	20	17	11	22	20	17	11	22	20	17	12	22	20	16	11	20	19	15	11	
75	kW	2.10	2.15	2.22	2.29	2.27	2.32	2.39	2.47	2.41	2.47	2.55	2.64	2.54	2.60	2.69	2.78	2.65	2.71	2.80	2.90	2.75	2.81	2.90	3.00	
	Amps	8.1	8.3	8.6	8.9	8.7	8.9	9.2	9.6	9.5	9.7	10.0	10.4	10.1	10.4	10.7	11.1	10.8	11.0	11.4	11.8	11.4	11.7	12.1	12.5	
	Hi PR	213	230	243	253	239	258	272	284	272	293	309	323	310	334	352	368	349	376	397	414	386	415	438	457	
	Lo PR	104	111	121	129	110	117	128	136	115	122	133	142	120	128	140	149	126	134	147	156	131	139	152	161	

kW = Total system power
Amps = outdoor unit amps (compressor + fan)

Shaded area reflects ACCA (TVA) conditions

IDB: Entering Indoor Dry Bulb Temperature
High and low pressures are measured at the liquid and suction service valves.

COOLING DATA — DSZC160361A* / CA*F3743*6** + TXV / MBVC1600**-1 — HIGH STAGE

IDB		OUTDOOR AMBIENT TEMPERATURE																																			
		65°F						75°F						85°F						95°F						105°F						115°F					
		ENTERING INDOOR WET BULB TEMPERATURE																																			
AIRFLOW		59	63	67	71	71	59	63	67	71	71	59	63	67	71	71	59	63	67	71	71	59	63	67	71	71	59	63	67	71	71						
1294	MBh	35.1	35.9	38.3	41.0	40.0	34.3	35.0	37.4	40.0	33.5	34.2	36.5	39.0	32.6	33.4	35.6	38.1	31.0	31.7	33.9	36.2	28.7	29.4	31.4	33.5	31.0	31.7	33.9	36.2	28.7	29.4	31.4	33.5			
	S/T	0.92	0.86	0.70	0.52	0.54	0.95	0.89	0.73	0.54	1.00	0.92	0.74	0.56	1.00	0.94	0.77	0.57	1.00	1.00	0.80	0.60	1.00	1.00	0.80	0.60	1.00	1.00	0.80	0.60	1.00	1.00	0.80	0.60			
	ΔT	23	22	19	15	15	23	22	19	15	24	22	19	15	23	22	19	16	22	23	23	19	15	20	21	18	14	22	23	19	15	20	21	18	14		
	kW	2.19	2.24	2.31	2.39	2.37	2.37	2.42	2.50	2.58	2.52	2.58	2.66	2.75	2.65	2.71	2.80	2.90	2.77	2.83	2.93	3.03	2.87	2.93	3.03	3.14	2.77	2.83	2.93	3.03	2.87	2.93	3.03	3.14			
	Amps	8.5	8.7	8.9	9.3	9.1	9.4	9.4	9.7	10.0	9.9	10.2	10.5	10.9	10.6	10.9	11.2	11.6	11.3	11.5	11.9	12.4	11.9	12.2	12.6	13.1	11.3	11.5	11.9	12.4	11.9	12.2	12.6	13.1			
	Hi PR	224	242	255	266	252	271	286	299	286	308	325	339	326	351	371	387	367	395	417	435	406	436	461	481	367	395	417	435	406	436	461	481				
	Lo PR	110	117	128	136	116	123	135	144	121	128	140	149	127	135	147	157	133	141	154	164	137	146	159	170	133	141	154	164	137	146	159	170				
1150	MBh	34.1	34.8	37.2	39.8	38.8	33.3	34.0	36.3	38.8	32.5	33.2	35.5	37.9	31.7	32.4	34.6	37.0	30.1	30.8	32.9	35.1	27.9	28.5	30.4	32.5	30.1	30.8	32.9	35.1	27.9	28.5	30.4	32.5			
	S/T	0.88	0.82	0.67	0.50	0.52	0.91	0.85	0.69	0.52	0.93	0.87	0.71	0.53	0.96	0.90	0.73	0.55	1.00	0.94	0.76	0.57	1.00	0.94	0.77	0.57	1.00	0.94	0.76	0.57	1.00	0.94	0.77	0.57			
	ΔT	24	23	20	16	16	24	23	20	16	24	23	20	16	24	23	20	16	24	23	20	16	22	21	19	15	24	23	20	16	22	21	19	15			
	kW	2.18	2.22	2.29	2.37	2.35	2.40	2.48	2.56	2.52	2.50	2.55	2.64	2.73	2.63	2.69	2.78	2.88	2.74	2.81	2.90	3.00	2.84	2.91	3.01	3.11	2.74	2.81	2.90	3.00	2.84	2.91	3.01	3.11			
	Amps	8.4	8.6	8.9	9.2	9.1	9.3	9.6	9.9	9.8	10.1	10.4	10.8	10.5	10.5	10.8	11.1	11.5	11.2	11.4	11.8	12.3	11.8	12.1	12.5	13.0	11.2	11.4	11.8	12.3	11.8	12.1	12.5	13.0			
	Hi PR	222	239	253	263	249	268	283	296	284	305	322	336	323	348	367	383	363	391	413	431	401	432	456	476	363	391	413	431	401	432	456	476				
	Lo PR	109	116	126	134	115	122	133	142	119	127	139	148	125	133	146	155	131	140	153	163	136	145	158	168	131	140	153	163	136	145	158	168				
1006	MBh	31.4	32.1	34.3	36.7	35.8	30.7	31.4	33.5	35.8	30.0	30.6	32.7	35.0	29.3	29.9	31.9	34.1	27.8	28.4	30.3	32.4	25.7	26.3	28.1	30.0	27.8	28.4	30.3	32.4	25.7	26.3	28.1	30.0			
	S/T	0.84	0.79	0.64	0.48	0.50	0.88	0.82	0.67	0.50	0.90	0.84	0.69	0.51	0.93	0.87	0.71	0.53	0.96	0.90	0.73	0.55	0.97	0.91	0.74	0.55	0.96	0.90	0.73	0.55	0.97	0.91	0.74	0.55			
	ΔT	24	23	20	16	16	25	24	20	16	25	24	20	16	25	24	21	16	24	23	20	16	23	22	19	15	24	23	20	16	23	22	19	15			
	kW	2.12	2.17	2.24	2.31	2.29	2.34	2.41	2.50	2.44	2.49	2.57	2.66	2.56	2.62	2.71	2.80	2.67	2.74	2.83	2.92	2.77	2.83	2.93	3.03	2.67	2.74	2.83	2.92	2.77	2.83	2.93	3.03				
	Amps	8.2	8.4	8.6	8.9	8.8	9.0	9.3	9.7	9.6	9.8	10.1	10.5	10.2	10.5	10.8	11.2	10.9	11.1	11.5	11.9	11.5	11.8	12.2	12.6	11.2	11.4	11.8	12.3	11.5	11.8	12.2	12.6				
	Hi PR	216	232	245	255	242	260	275	287	275	296	313	326	313	337	356	371	352	379	401	418	389	419	443	462	352	379	401	418	389	419	443	462				
	Lo PR	105	112	122	130	111	119	129	138	116	123	134	143	122	129	141	150	127	136	148	158	132	140	153	163	127	136	148	158	132	140	153	163				
1294	MBh	35.7	36.4	38.1	40.7	39.7	34.9	35.6	37.2	39.7	34.0	34.7	36.3	38.8	33.2	33.9	35.5	37.8	31.6	32.2	33.7	35.9	29.2	29.8	31.2	33.3	31.6	32.2	33.7	35.9	29.2	29.8	31.2	33.3			
	S/T	0.96	0.93	0.84	0.68	0.70	1.00	0.96	0.87	0.70	1.00	0.99	0.89	0.72	1.00	1.00	0.92	0.75	1.00	1.00	0.95	0.77	1.00	1.00	0.96	0.78	1.00	1.00	0.95	0.77	1.00	1.00	0.96	0.78			
	ΔT	24	24	23	20	20	25	24	23	20	24	24	23	20	24	24	23	20	22	23	23	20	21	21	21	18	22	23	23	20	21	21	21	18			
	kW	2.21	2.26	2.33	2.41	2.39	2.39	2.44	2.52	2.60	2.54	2.60	2.68	2.77	2.68	2.74	2.83	2.93	2.79	2.86	2.95	3.05	2.89	2.96	3.06	3.17	2.79	2.86	2.95	3.05	2.89	2.96	3.06	3.17			
	Amps	8.5	8.7	9.0	9.4	9.2	9.4	9.7	10.1	10.0	10.0	10.3	10.6	11.0	10.7	11.0	11.3	11.7	11.4	11.7	12.0	12.5	12.0	12.3	12.8	13.2	11.4	11.7	12.0	12.5	12.0	12.3	12.8	13.2			
	Hi PR	227	244	258	269	254	274	289	301	289	311	329	343	329	355	374	391	371	399	421	439	410	441	465	485	371	399	421	439	410	441	465	485				
	Lo PR	111	118	129	137	117	125	136	145	122	130	141	151	128	136	149	158	134	143	156	166	139	148	161	172	134	143	156	166	139	148	161	172				
1150	MBh	34.7	35.3	37.0	39.5	38.6	33.9	34.5	36.1	38.6	33.1	33.7	35.3	37.6	32.2	32.9	34.4	36.7	30.6	31.2	32.7	34.9	28.4	28.9	30.3	32.3	30.6	31.2	32.7	34.9	28.4	28.9	30.3	32.3			
	S/T	0.92	0.89	0.80	0.65	0.67	0.95	0.92	0.83	0.67	0.98	0.94	0.85	0.69	1.00	0.97	0.88	0.71	1.00	1.00	0.91	0.74	1.00	1.00	0.92	0.74	1.00	1.00	0.91	0.74	1.00	1.00	0.92	0.74			
	ΔT	25	25	24	20	20	26	25	24	21	26	25	24	21	26	26	24	21	24	25	24	21	23	23	22	19	24	25	24	21	23	23	22	19			
	kW	2.19	2.24	2.31	2.39	2.37	2.37	2.42	2.50	2.58	2.52	2.58	2.66	2.75	2.65	2.71	2.80	2.90	2.77	2.83	2.93	3.03	2.87	2.93	3.03	3.14	2.77	2.83	2.93	3.03	2.87	2.93	3.03	3.14			
	Amps	8.5	8.7	8.9	9.3	9.1	9.4	9.7	10.0	9.9	10.2	10.5	10.9	10.6	10.6	10.9	11.2	11.6	11.3	11.5	11.9	12.4	11.9	12.2	12.6	13.1	11.3	11.5	11.9	12.4	11.9	12.2	12.6	13.1			
	Hi PR	224	242	255	266	252	271	286	299	286	308	325	339	326	351	371	387	367	395	417	435	406	436	461	481	367	395	417	435	406	436	461	481				
	Lo PR	110	117	128	136	116	123	135	144	121	128	140	149	127	135	147	157	133	141	154	164	137	146	159	170	133	141	154	164	137	146	159	170				
1006	MBh	32.0	32.6	34.2	36.4	35.6	31.3	31.9	33.4	35.6	30.5	31.1	32.6	34.7	29.8	30.3	31.8	33.9	28.3	28.8	30.2	32.2	26.2	26.7	28.0	29.8	28.3	28.8	30.2	32.2	26.2	26.7	28.0	29.8			
	S/T	0.89	0.85	0.77	0.63	0.63	0.92	0.89	0.80	0.65	0.94	0.91	0.82	0.66	0.97	0.94	0.85	0.69	1.00	0.97	0.88	0.71	1.00	0.98	0.89	0.72	1.00	0.97	0.88	0.71	1.00	0.98	0.89	0.72			
	ΔT	26	25	24	21	21	26	26	24	21	26	26	24	21	26	26	25	21	26	26	24	21	24	24	23	20	26	26	24	21	24	24	23	20			
	kW	2.14	2.19	2.26	2.33	2.33	2.31	2.36	2.43	2.52	2.46	2.51	2.59	2.68	2.59	2.64	2.73	2.83	2.70	2.76	2.85	2.95	2.79	2.86	2.95	3.06	2.70	2.76	2.85	2.95	2.79	2.86	2.95	3.06			
	Amps	8.2	8.4	8.7	9.0	8.9	9.1	9.4	9.7	9.7	9.7	9.9	10.2	10.6	10.3	10.6	10.9	11.3	11.0	11.2	11.6	12.0	11.6	11.9	12.3	12.8	11.0	11.2	11.6	12.0	11.6	11.9	12.3	12.8			
	Hi PR	218	234	247	258																																

COOLING DATA — DSZC160481A* / CA*F4961*6** + TXV / MBVC2000** -1 — LOW STAGE

IDB	AIRFLOW	OUTDOOR AMBIENT TEMPERATURE												ENTERING INDOOR WET BULB TEMPERATURE											
		65°F				75°F				85°F				95°F				105°F				115°F			
		59	63	67	71	59	63	67	71	59	63	67	71	59	63	67	71	59	63	67	71	59	63	67	71
70	MBh	33.7	35.0	38.3	-	33.0	34.2	37.4	-	32.2	33.3	36.5	-	31.4	32.5	35.6	-	29.8	30.9	33.9	-	27.6	28.6	31.4	-
	S/T	0.74	0.62	0.43	-	0.77	0.64	0.45	-	0.79	0.66	0.46	-	0.81	0.68	0.47	-	0.85	0.71	0.49	-	0.85	0.71	0.49	-
	ΔT	19	16	13	-	19	17	13	-	19	17	13	-	19	17	13	-	19	17	13	-	18	15	12	-
	kW	1.96	2.00	2.07	-	2.12	2.16	2.23	-	2.25	2.30	2.38	-	2.37	2.43	2.51	-	2.48	2.53	2.62	-	2.57	2.62	2.71	-
	Amps	7.6	7.8	8.0	-	8.2	8.4	8.7	-	8.9	9.1	9.4	-	9.5	9.7	10.1	-	10.1	10.4	10.7	-	10.7	11.0	11.3	-
941	MBh	32.8	34.0	37.2	-	32.0	33.2	36.3	-	31.2	32.4	35.5	-	30.5	31.6	34.6	-	28.9	30.0	32.9	-	26.8	27.8	30.4	-
	S/T	0.71	0.59	0.41	-	0.73	0.61	0.42	-	0.75	0.63	0.44	-	0.78	0.65	0.45	-	0.81	0.67	0.47	-	0.81	0.68	0.47	-
	ΔT	20	17	13	-	20	17	13	-	20	17	13	-	20	18	13	-	20	17	13	-	19	16	12	-
	kW	1.95	1.99	2.05	-	2.10	2.15	2.22	-	2.23	2.28	2.36	-	2.35	2.41	2.49	-	2.46	2.51	2.60	-	2.54	2.60	2.69	-
	Amps	7.5	7.7	8.0	-	8.1	8.3	8.6	-	8.8	9.0	9.3	-	9.4	9.7	10.0	-	10.0	10.3	10.6	-	10.6	10.9	11.2	-

IDB	AIRFLOW	OUTDOOR AMBIENT TEMPERATURE												ENTERING INDOOR WET BULB TEMPERATURE											
		65°F				75°F				85°F				95°F				105°F				115°F			
		59	63	67	71	59	63	67	71	59	63	67	71	59	63	67	71	59	63	67	71	59	63	67	71
75	MBh	34.3	35.3	38.2	41.0	33.5	34.5	37.3	40.1	32.7	33.7	36.5	39.1	31.9	32.9	35.6	38.2	30.3	31.2	33.8	36.3	28.1	28.9	31.3	33.6
	S/T	0.84	0.75	0.57	0.37	0.87	0.78	0.59	0.38	0.90	0.80	0.61	0.39	0.93	0.83	0.63	0.40	0.96	0.86	0.65	0.42	0.97	0.87	0.66	0.42
	ΔT	22	20	17	11	22	21	17	12	22	21	18	12	22	21	18	12	22	20	17	12	21	19	16	11
	kW	1.98	2.02	2.09	2.16	2.13	2.18	2.25	2.33	2.27	2.32	2.40	2.48	2.39	2.45	2.53	2.62	2.50	2.56	2.64	2.73	2.59	2.65	2.74	2.83
	Amps	7.7	7.9	8.1	8.4	8.3	8.5	8.8	9.1	9.0	9.2	9.5	9.9	9.6	9.8	10.2	10.5	10.2	10.5	10.8	11.2	10.8	11.1	11.4	11.9
941	MBh	33.3	34.3	37.1	39.8	32.5	33.5	36.3	38.9	31.8	32.7	35.4	38.0	31.0	31.9	34.5	37.1	29.4	30.3	32.8	35.2	27.3	28.1	30.4	32.6
	S/T	0.80	0.72	0.54	0.35	0.83	0.75	0.56	0.36	0.86	0.77	0.58	0.37	0.88	0.79	0.60	0.38	0.92	0.82	0.62	0.40	0.92	0.83	0.63	0.40
	ΔT	23	21	17	12	23	21	18	12	23	21	18	12	23	22	18	12	23	21	17	12	22	20	16	11
	kW	1.96	2.00	2.07	2.14	2.12	2.16	2.23	2.31	2.25	2.30	2.38	2.46	2.37	2.43	2.51	2.60	2.48	2.53	2.62	2.71	2.57	2.63	2.71	2.81
	Amps	7.6	7.8	8.0	8.3	8.2	8.4	8.7	9.0	8.9	9.1	9.4	9.8	9.5	9.7	10.1	10.4	10.1	10.4	10.7	11.1	10.7	11.0	11.3	11.8

IDB: Entering Indoor Dry Bulb Temperature
 High and low pressures are measured at the liquid and suction service valves.
 Shaded area reflects ACCA (TVA) conditions
 kW = Total system power
 Amps = outdoor unit amps (compressor + fan)

COOLING DATA — DSZC160481A* / CA*F4961*6** + TXV / MBVC2000** -1 — LOW STAGE

IDB	AIRFLOW	OUTDOOR AMBIENT TEMPERATURE												ENTERING INDOOR WET BULB TEMPERATURE											
		65°F				75°F				85°F				95°F				105°F				115°F			
		59	63	67	71	59	63	67	71	59	63	67	71	59	63	67	71	59	63	67	71	59	63	67	71
1209	MBh	34.9	35.7	38.1	40.8	34.1	34.9	37.2	39.8	33.3	34.0	36.3	38.9	32.5	33.2	35.5	37.9	30.9	31.5	33.7	36.0	28.6	29.2	31.2	33.4
	S/T	0.93	0.87	0.71	0.53	0.96	0.90	0.73	0.55	1.00	0.92	0.75	0.56	1.00	0.95	0.78	0.58	1.00	1.00	0.80	0.60	1.00	1.00	0.81	0.61
	ΔT	25	24	20	16	25	24	21	17	25	24	21	17	25	24	21	17	23	24	21	16	22	22	19	15
	kW	1.99	2.04	2.10	2.17	2.15	2.20	2.27	2.35	2.29	2.34	2.42	2.50	2.42	2.47	2.55	2.64	2.52	2.58	2.67	2.76	2.61	2.67	2.76	2.86
	Amps	7.7	7.9	8.2	8.5	8.4	8.6	8.8	9.2	9.1	9.3	9.6	10.0	9.7	9.9	10.3	10.6	10.3	10.6	10.9	11.3	10.9	11.2	11.6	12.0
	Lo PR	209	225	237	247	234	252	266	278	266	287	303	316	303	327	345	360	341	367	388	405	377	406	429	447
80	MBh	33.9	34.6	37.0	39.6	33.1	33.8	36.2	38.6	32.3	33.0	35.3	37.7	31.5	32.2	34.4	36.8	30.0	30.6	32.7	35.0	27.8	28.4	30.3	32.4
	S/T	0.88	0.83	0.67	0.50	0.91	0.86	0.70	0.52	0.94	0.88	0.72	0.54	0.97	0.91	0.74	0.55	1.00	0.94	0.77	0.57	1.00	0.95	0.77	0.58
	ΔT	26	25	21	17	26	25	22	17	26	25	22	17	26	25	22	17	26	25	21	17	24	23	20	16
	kW	1.98	2.02	2.09	2.16	2.13	2.18	2.25	2.33	2.27	2.32	2.40	2.48	2.40	2.45	2.53	2.62	2.50	2.56	2.64	2.73	2.59	2.65	2.74	2.83
	Amps	7.7	7.9	8.1	8.4	8.3	8.5	8.8	9.1	9.0	9.2	9.5	9.9	9.6	9.8	10.2	10.5	10.2	10.5	10.8	11.2	10.8	11.1	11.4	11.9
	Lo PR	207	222	235	245	232	250	264	275	264	284	300	313	300	323	341	356	338	364	384	401	373	402	424	443
941	MBh	31.3	32.0	34.2	36.5	30.6	31.2	33.4	35.7	29.8	30.5	32.6	34.8	29.1	29.7	31.8	34.0	27.7	28.3	30.2	32.3	25.6	26.2	28.0	29.9
	S/T	0.85	0.80	0.65	0.49	0.88	0.83	0.67	0.50	0.90	0.85	0.69	0.52	0.93	0.88	0.71	0.53	0.97	0.91	0.74	0.55	0.98	0.92	0.75	0.56
	ΔT	26	25	22	17	26	25	22	18	26	25	22	18	27	25	22	18	26	25	22	17	24	23	20	16
	kW	1.93	1.97	2.03	2.10	2.08	2.13	2.20	2.27	2.22	2.26	2.34	2.42	2.33	2.39	2.47	2.55	2.43	2.49	2.57	2.66	2.52	2.58	2.67	2.76
	Amps	7.5	7.6	7.9	8.2	8.1	8.3	8.5	8.8	8.8	9.0	9.3	9.6	9.3	9.6	9.9	10.3	9.9	10.2	10.5	10.9	10.5	10.8	11.1	11.6
	Lo PR	201	216	228	238	225	242	256	267	256	275	291	303	291	314	331	345	328	353	373	389	362	390	412	429
1209	MBh	35.5	36.2	37.9	40.5	34.7	35.4	37.0	39.5	33.9	34.5	36.2	38.6	33.1	33.7	35.3	37.6	31.4	32.0	33.5	35.8	29.1	29.6	31.1	33.1
	S/T	0.97	0.94	0.85	0.69	1.00	0.97	0.88	0.71	1.00	1.00	0.90	0.73	1.00	1.00	0.93	0.75	1.00	1.00	0.96	0.78	1.00	1.00	0.97	0.79
	ΔT	26	26	24	21	26	26	25	21	26	26	25	21	25	26	25	21	24	24	25	21	22	23	23	20
	kW	2.01	2.05	2.12	2.19	2.17	2.22	2.29	2.37	2.31	2.36	2.44	2.53	2.44	2.49	2.58	2.66	2.54	2.60	2.69	2.78	2.63	2.69	2.79	2.88
	Amps	7.8	8.0	8.3	8.6	8.4	8.6	8.9	9.2	9.2	9.4	9.7	10.0	9.8	10.0	10.3	10.7	10.4	10.7	11.0	11.4	11.0	11.3	11.7	12.1
	Lo PR	211	227	240	250	237	255	269	280	269	290	306	319	307	330	348	363	345	371	392	409	381	410	433	452
1075	MBh	34.5	35.2	36.8	39.3	33.7	34.3	36.0	38.4	32.9	33.5	35.1	37.5	32.1	32.7	34.3	36.5	30.5	31.1	32.5	34.7	28.2	28.8	30.1	32.2
	S/T	0.93	0.89	0.81	0.65	0.96	0.93	0.84	0.68	0.98	0.95	0.86	0.69	1.00	0.98	0.88	0.72	1.00	1.00	0.92	0.74	1.00	1.00	0.93	0.75
	ΔT	27	27	25	22	28	27	26	22	28	27	26	22	27	27	26	22	26	27	26	22	24	25	24	21
	kW	1.99	2.04	2.10	2.17	2.15	2.20	2.27	2.35	2.29	2.34	2.42	2.50	2.42	2.47	2.55	2.64	2.52	2.58	2.67	2.76	2.61	2.67	2.76	2.86
	Amps	7.7	7.9	8.2	8.5	8.4	8.6	8.8	9.2	9.1	9.3	9.6	10.0	9.7	9.9	10.3	10.6	10.3	10.6	10.9	11.3	10.9	11.2	11.6	12.0
	Lo PR	209	225	237	247	234	252	266	278	266	287	303	316	303	327	345	360	341	367	388	405	377	406	429	447
941	MBh	31.8	32.5	34.0	36.3	31.1	31.7	33.2	35.4	30.4	30.9	32.4	34.6	29.6	30.2	31.6	33.7	28.1	28.7	30.0	32.0	26.1	26.6	27.8	29.7
	S/T	0.89	0.86	0.78	0.63	0.92	0.89	0.81	0.65	0.95	0.92	0.83	0.67	0.98	0.94	0.85	0.69	1.00	0.98	0.88	0.72	1.00	0.99	0.89	0.72
	ΔT	27.8	27	26	22	28	28	26	23	28	28	26	23	28	28	26	23	28	27	26	22	25	26	24	21
	kW	1.94	1.99	2.05	2.12	2.10	2.14	2.22	2.29	2.23	2.28	2.36	2.44	2.35	2.41	2.49	2.57	2.46	2.51	2.60	2.69	2.54	2.60	2.69	2.78
	Amps	7.5	7.7	8.0	8.3	8.1	8.3	8.6	8.9	8.8	9.0	9.3	9.7	9.4	9.7	10.0	10.3	10.0	10.3	10.6	11.0	10.6	10.9	11.2	11.7
	Lo PR	203	218	230	240	227	245	258	269	258	278	294	306	294	317	335	349	331	356	376	393	366	394	416	434

kW = Total system power
Amps = outdoor unit amps (compressor + fan)

Shaded area reflects AHRI (TVA) conditions

IDB: Entering Indoor Dry Bulb Temperature
High and low pressures are measured at the liquid and suction service valves.

COOLING DATA — DSZC160481A* / CA*F4961*6*** + TXV / MBVC2000*-1 — HIGH STAGE

		OUTDOOR AMBIENT TEMPERATURE												ENTERING INDOOR WET BULB TEMPERATURE																													
		65°F				75°F				85°F				95°F				105°F				115°F																					
IDB	AIRFLOW	59	63	67	71	59	63	67	71	59	63	67	71	59	63	67	71	59	63	67	71	59	63	67	71	59	63	67	71	59	63	67	71	59	63	67	71	59	63	67	71		
70	MBh	46.5	48.2	52.9	-	45.5	47.1	51.6	-	44.4	46.0	50.4	-	43.3	44.9	49.2	-	41.1	42.6	46.7	-	38.1	39.5	43.3	-	38.1	39.5	43.3	-	38.1	39.5	43.3	-	38.1	39.5	43.3	-						
	S/T	0.76	0.63	0.44	-	0.79	0.66	0.45	-	0.81	0.67	0.47	-	0.83	0.70	0.48	-	0.86	0.72	0.50	-	0.87	0.73	0.50	-	0.87	0.73	0.50	-	0.87	0.73	0.50	-										
	ΔT	19	16	12	-	19	16	12	-	19	16	12	-	19	16	12	-	19	16	12	-	18	15	11	-	18	15	11	-	18	15	11	-										
	kW	2.82	2.88	2.98	-	3.04	3.11	3.21	-	3.24	3.31	3.42	-	3.41	3.48	3.60	-	3.55	3.63	3.75	-	3.68	3.76	3.89	-	3.68	3.76	3.89	-	3.68	3.76	3.89	-										
	Amps	5.8	6.0	6.4	-	6.6	6.9	7.3	-	7.6	7.9	8.3	-	8.5	8.8	9.3	-	9.3	9.7	10.2	-	10.2	10.5	11.1	-	10.2	10.5	11.1	-	10.2	10.5	11.1	-										
	Hi PR	212	228	241	-	238	256	270	-	270	291	307	-	308	331	350	-	346	373	393	-	382	412	435	-	382	412	435	-	382	412	435	-										
Lo PR	107	114	124	-	113	120	131	-	117	125	136	-	123	131	143	-	129	137	150	-	133	142	155	-	133	142	155	-	133	142	155	-											
70	MBh	45.2	46.8	51.3	-	44.1	45.7	50.1	-	43.1	44.7	48.9	-	42.0	43.6	47.7	-	39.9	41.4	45.4	-	37.0	38.3	42.0	-	37.0	38.3	42.0	-	37.0	38.3	42.0	-										
	S/T	0.72	0.60	0.42	-	0.75	0.63	0.43	-	0.77	0.64	0.44	-	0.79	0.66	0.46	-	0.82	0.69	0.48	-	0.83	0.69	0.48	-	0.83	0.69	0.48	-	0.83	0.69	0.48	-										
	ΔT	19	17	13	-	20	17	13	-	20	17	13	-	20	17	13	-	20	17	13	-	18	16	12	-	18	16	12	-	18	16	12	-										
	kW	2.80	2.86	2.95	-	3.02	3.08	3.18	-	3.21	3.28	3.39	-	3.38	3.45	3.57	-	3.52	3.60	3.72	-	3.65	3.73	3.86	-	3.65	3.73	3.86	-	3.65	3.73	3.86	-										
	Amps	5.7	5.9	6.3	-	6.5	6.8	7.2	-	7.5	7.8	8.2	-	8.4	8.7	9.1	-	9.2	9.5	10.0	-	10.0	10.4	10.9	-	10.0	10.4	10.9	-	10.0	10.4	10.9	-										
	Hi PR	210	226	238	-	235	253	267	-	267	288	304	-	305	328	346	-	343	369	389	-	379	408	430	-	379	408	430	-	379	408	430	-										
Lo PR	106	112	123	-	112	119	130	-	116	123	135	-	122	130	142	-	128	136	148	-	132	141	153	-	132	141	153	-	132	141	153	-											
70	MBh	41.7	43.2	47.4	-	40.7	42.2	46.3	-	39.8	41.2	45.2	-	38.8	40.2	44.1	-	36.9	38.2	41.9	-	34.1	35.4	38.8	-	34.1	35.4	38.8	-	34.1	35.4	38.8	-										
	S/T	0.70	0.58	0.40	-	0.72	0.60	0.42	-	0.74	0.62	0.43	-	0.77	0.64	0.44	-	0.79	0.66	0.46	-	0.80	0.67	0.46	-	0.80	0.67	0.46	-	0.80	0.67	0.46	-										
	ΔT	20	17	13	-	20	17	13	-	20	17	13	-	20	17	13	-	20	17	13	-	19	16	12	-	19	16	12	-	19	16	12	-										
	kW	2.73	2.79	2.88	-	2.94	3.01	3.10	-	3.13	3.20	3.30	-	3.29	3.37	3.48	-	3.43	3.51	3.63	-	3.55	3.63	3.76	-	3.55	3.63	3.76	-	3.55	3.63	3.76	-										
	Amps	5.4	5.6	6.0	-	6.2	6.5	6.9	-	7.2	7.5	7.9	-	8.0	8.3	8.7	-	8.8	9.1	9.6	-	9.6	10.0	10.5	-	9.6	10.0	10.5	-	9.6	10.0	10.5	-										
	Hi PR	203	219	231	-	228	245	259	-	259	279	295	-	296	318	336	-	332	358	378	-	367	395	417	-	367	395	417	-	367	395	417	-										
Lo PR	102	109	119	-	108	115	126	-	113	120	131	-	118	126	137	-	124	132	144	-	128	136	148	-	128	136	148	-	128	136	148	-											
75	MBh	47.3	48.7	52.8	56.6	46.2	47.6	51.5	55.3	45.1	46.5	50.3	54.0	44.0	45.3	49.1	52.7	41.8	43.1	46.6	50.0	38.7	39.9	43.2	46.3	38.7	39.9	43.2	46.3														
	S/T	0.86	0.77	0.58	0.38	0.89	0.80	0.61	0.39	0.92	0.82	0.62	0.40	0.95	0.85	0.64	0.41	0.98	0.88	0.66	0.43	0.99	0.89	0.67	0.43	0.99	0.89	0.67	0.43														
	ΔT	22	20	16	11	22	20	16	11	22	20	16	11	22	20	17	11	22	20	16	11	20	19	15	11	20	19	15	11														
	kW	2.85	2.91	3.00	3.10	3.07	3.14	3.24	3.34	3.26	3.34	3.45	3.56	3.44	3.51	3.63	3.75	3.58	3.66	3.79	3.92	3.71	3.79	3.92	4.06	3.71	3.79	3.92	4.06														
	Amps	5.9	6.1	6.5	6.9	6.7	7.0	7.4	7.9	7.7	8.0	8.5	9.0	8.6	8.9	9.4	9.9	9.5	9.8	10.3	10.9	10.3	10.7	11.2	11.8	10.3	10.7	11.2	11.8														
	Hi PR	214	230	243	253	240	258	273	284	273	294	310	323	311	334	353	368	350	376	397	414	386	416	439	458	386	416	439	458														
Lo PR	108	115	125	133	114	121	132	141	118	126	137	146	124	132	144	154	130	139	151	161	135	143	157	167	135	143	157	167															
75	MBh	46.0	47.3	51.2	55.0	44.9	46.2	50.0	53.7	43.8	45.1	48.8	52.4	42.8	44.0	47.6	51.1	40.6	41.8	45.3	48.6	37.6	38.7	41.9	45.0	37.6	38.7	41.9	45.0														
	S/T	0.82	0.74	0.56	0.36	0.85	0.76	0.58	0.37	0.87	0.78	0.59	0.38	0.90	0.81	0.61	0.39	0.94	0.84	0.63	0.41	0.94	0.84	0.64	0.41	0.94	0.84	0.64	0.41														
	ΔT	22	21	17	12	23	21	17	12	23	21	17	12	23	21	17	12	23	21	17	12	21	19	16	11	21	19	16	11														
	kW	2.82	2.88	2.98	3.07	3.04	3.11	3.21	3.32	3.24	3.31	3.42	3.53	3.41	3.48	3.60	3.72	3.55	3.63	3.75	3.88	3.68	3.76	3.89	4.02	3.68	3.76	3.89	4.02														
	Amps	5.8	6.0	6.4	6.8	6.6	6.9	7.3	7.7	7.6	7.9	8.3	8.8	8.5	8.8	9.3	9.8	9.3	9.7	10.2	10.7	10.2	10.5	11.1	11.7	10.2	10.5	11.1	11.7														
	Hi PR	212	228	241	251	238	256	270	282	270	291	307	320	308	331	350	365	346	373	393	410	383	412	435	453	383	412	435	453														
Lo PR	107	114	124	132	113	120	131	139	117	125	136	145	123	131	143	152	129	137	150	160	133	142	155	165	133	142	155	165															
75	MBh	42.4	43.7	47.3	50.7	41.4	42.7	46.2	49.6	40.4	41.6	45.1	48.4	39.5	40.6	44.0	47.2	37.5	38.6	41.8	44.8	34.7	35.8	38.7	41.5	34.7	35.8	38.7	41.5														
	S/T	0.79	0.71	0.54	0.35	0.82	0.74	0.56	0.36	0.84	0.75	0.57	0.37	0.87	0.78	0.59	0.38	0.90	0.81	0.61	0.39	0.91	0.81	0.62	0.40	0.91	0.81	0.62	0.40														
	ΔT	23	21	17	12	23	21	17	12	23	21	17	12	23	21	18	12	23	21	17	12	21	20	16	11	21	20	16	11														
	kW	2.76	2.81	2.90	3.00	2.97	3.03	3.13	3.23	3.16	3.23	3.33	3.44	3.32	3.40	3.51	3.63	3.46	3.54	3.66	3.78	3.59	3.67	3.79	3.92	3.59	3.67	3.79	3.92														
	Amps	5.5	5.7	6.1	6.5	6.3	6.6	7.0	7.4	7.3	7.6	8.0	8.5	8.1	8.4	8.9	9.4	8.9	9.3	9.8	10.3	9.8	10.1	10.6	11.2	9.8	10.1	10.6	11.2														
	Hi PR	205	221	233	243	230	248	262	273	262	282	298	311	299	321	339	354	336	361	382	398	371	399	422	440	371	399	422	440														
Lo PR	104	110	120	128	109	116	127	135	114	121	132	141	119	127	139	148	125	133	145	155	129	138	150	160	129	138	150	160															

IDB: Entering Indoor Dry Bulb Temperature
 High and low pressures are measured at the liquid and suction service valves.
 Shaded area reflects ACCA (TVA) conditions
 kW = Total system power
 Amps = outdoor unit amps (compressor + fan)

COOLING DATA — DSZC160481A* / CA*F4961*6*** + TXV / MBVC2000** -1 — HIGH STAGE

Table with columns for Outdoor Ambient Temperature (65°F to 115°F) and Indoor Wet Bulb Temperature (59°F to 71°F). Rows include IDB, Airflow, and performance metrics (MBh, S/T, ΔT, kW, Amps, Hi PR, Lo PR) for capacities 80, 1356, and 1744.

Table with columns for Outdoor Ambient Temperature (65°F to 115°F) and Indoor Wet Bulb Temperature (59°F to 71°F). Rows include IDB, Airflow, and performance metrics (MBh, S/T, ΔT, kW, Amps, Hi PR, Lo PR) for capacities 85, 1356, and 1744.

IDB: Entering Indoor Dry Bulb Temperature High and low pressures are measured at the liquid and suction service valves. Shaded area reflects AHRI (TVA) conditions. kW = Total system power Amps = outdoor unit amps (compressor + fan)

COOLING DATA — DSZC160601B / CAPF4961D6* +TXV / MBVC2000A — LOW STAGE

IDB		OUTDOOR AMBIENT TEMPERATURE														ENTERING INDOOR WET BULB TEMPERATURE																													
		65°F							75°F							85°F							95°F							105°F							115°F								
		59	63	67	71	75	79	83	59	63	67	71	75	79	83	59	63	67	71	75	79	83	59	63	67	71	75	79	83	59	63	67	71	75	79	83	59	63	67	71	75	79	83		
1350	MBh	39.4	40.8	44.7	-	-	-	37.6	38.9	42.7	-	-	-	36.7	38.0	41.6	-	-	-	34.8	36.1	39.5	-	-	-	32.3	33.4	36.6	-	-	-	-	-	-	-	-	-	-	-						
	S/T	0.72	0.60	0.42	-	-	-	0.77	0.64	0.44	-	-	-	0.79	0.66	0.46	-	-	-	0.82	0.69	0.48	-	-	-	0.83	0.69	0.48	-	-	-	-	-	-	-	-	-	-	-						
	ΔT	19	17	13	-	-	-	20	17	13	-	-	-	20	17	13	-	-	-	20	17	13	-	-	-	18	16	12	-	-	-	-	-	-	-	-	-	-	-						
	kW	2.38	2.43	2.51	-	-	-	2.73	2.79	2.88	-	-	-	2.87	2.94	3.03	-	-	-	3.00	3.06	3.17	-	-	-	3.10	3.17	3.28	-	-	-	-	-	-	-	-	-	-	-						
	Amps	8.9	9.1	9.4	-	-	-	10.3	10.6	10.9	-	-	-	11.0	11.2	11.6	-	-	-	11.7	11.9	12.3	-	-	-	12.3	12.6	13.0	-	-	-	-	-	-	-	-	-	-	-	-					
70	Hi PR	205	221	233	-	-	-	262	281	297	-	-	-	298	321	338	-	-	-	335	361	381	-	-	-	370	398	421	-	-	-	-	-	-	-	-	-	-	-	-					
	Lo PR	107	113	124	-	-	-	117	124	136	-	-	-	123	131	143	-	-	-	129	137	150	-	-	-	133	142	155	-	-	-	-	-	-	-	-	-	-	-	-					
	MBh	38.3	39.7	43.4	-	-	-	36.5	37.8	41.4	-	-	-	35.6	36.9	40.4	-	-	-	33.8	35.0	38.4	-	-	-	31.3	32.5	35.6	-	-	-	-	-	-	-	-	-	-	-	-					
	S/T	0.69	0.58	0.40	-	-	-	0.73	0.61	0.42	-	-	-	0.76	0.63	0.44	-	-	-	0.79	0.66	0.45	-	-	-	0.79	0.66	0.46	-	-	-	-	-	-	-	-	-	-	-	-	-				
	ΔT	21	18	14	-	-	-	21	19	14	-	-	-	22	19	14	-	-	-	21	18	14	-	-	-	20	17	13	-	-	-	-	-	-	-	-	-	-	-	-	-				
1050	kW	2.36	2.41	2.49	-	-	-	2.71	2.77	2.86	-	-	-	2.85	2.91	3.01	-	-	-	2.97	3.04	3.14	-	-	-	3.08	3.14	3.25	-	-	-	-	-	-	-	-	-	-	-	-	-				
	Amps	8.8	9.0	9.3	-	-	-	10.2	10.5	10.8	-	-	-	10.9	11.1	11.5	-	-	-	11.6	11.8	12.2	-	-	-	12.2	12.5	12.9	-	-	-	-	-	-	-	-	-	-	-	-	-	-			
	Hi PR	203	218	231	-	-	-	259	279	294	-	-	-	295	317	335	-	-	-	332	357	377	-	-	-	367	394	417	-	-	-	-	-	-	-	-	-	-	-	-	-	-			
	Lo PR	105	112	122	-	-	-	116	123	134	-	-	-	122	129	141	-	-	-	127	136	148	-	-	-	132	140	153	-	-	-	-	-	-	-	-	-	-	-	-	-	-			
	MBh	37.7	39.1	42.8	-	-	-	35.9	37.2	40.8	-	-	-	35.1	36.3	39.8	-	-	-	33.3	34.5	37.8	-	-	-	30.8	32.0	35.0	-	-	-	-	-	-	-	-	-	-	-	-	-	-			
75	S/T	0.67	0.56	0.38	-	-	-	0.71	0.59	0.41	-	-	-	0.73	0.61	0.42	-	-	-	0.76	0.63	0.44	-	-	-	0.76	0.64	0.44	-	-	-	-	-	-	-	-	-	-	-	-	-				
	ΔT	22	19	14	-	-	-	22	19	15	-	-	-	22	19	15	-	-	-	22	19	15	-	-	-	21	18	14	-	-	-	-	-	-	-	-	-	-	-	-	-	-			
	kW	2.40	2.45	2.53	2.61	-	-	2.75	2.81	2.91	3.00	-	-	2.90	2.96	3.06	3.16	-	-	3.02	3.09	3.19	3.30	-	-	3.13	3.20	3.31	3.42	-	-	-	-	-	-	-	-	-	-	-	-	-			
	Amps	9.0	9.2	9.4	9.8	-	-	10.4	10.7	11.0	11.4	-	-	11.1	11.3	11.7	12.1	-	-	11.8	12.0	12.4	12.9	-	-	12.4	12.7	13.1	13.6	-	-	-	-	-	-	-	-	-	-	-	-	-	-		
	Hi PR	207	223	235	245	-	-	264	284	300	313	-	-	301	324	342	357	373	-	-	339	364	385	401	-	-	374	402	425	443	-	-	-	-	-	-	-	-	-	-	-	-	-		
1350	Lo PR	108	114	125	133	-	-	118	126	137	146	-	-	124	132	144	154	-	-	130	138	151	161	-	-	135	143	156	166	-	-	-	-	-	-	-	-	-	-	-	-	-			
	MBh	38.9	40.1	43.4	46.5	-	-	37.1	38.2	41.3	44.4	-	-	36.2	37.3	40.3	43.3	-	-	34.4	35.4	38.3	41.1	-	-	31.8	32.8	35.5	38.1	-	-	-	-	-	-	-	-	-	-	-	-	-			
	S/T	0.78	0.70	0.53	0.34	-	-	0.83	0.75	0.56	0.36	-	-	0.86	0.77	0.58	0.37	-	-	0.89	0.80	0.60	0.39	-	-	0.90	0.81	0.61	0.39	-	-	-	-	-	-	-	-	-	-	-	-	-	-		
	ΔT	24	22	18	13	-	-	25	23	19	13	-	-	25	23	19	13	-	-	25	23	19	13	-	-	23	21	17	12	-	-	-	-	-	-	-	-	-	-	-	-	-	-		
	kW	2.38	2.43	2.51	2.59	-	-	2.73	2.79	2.88	2.98	3.08	-	-	2.87	2.94	3.04	3.14	-	-	3.00	3.06	3.17	3.27	-	-	3.10	3.17	3.28	3.39	-	-	-	-	-	-	-	-	-	-	-	-	-	-	
1150	Amps	8.9	9.1	9.4	9.7	-	-	10.3	10.6	10.9	11.3	-	-	11.0	11.2	11.6	12.0	-	-	11.7	11.9	12.3	12.7	-	-	12.3	12.6	13.0	13.5	-	-	-	-	-	-	-	-	-	-	-	-	-	-	-	
	Hi PR	205	221	233	243	-	-	262	281	297	310	-	-	298	321	339	353	369	-	-	335	361	381	397	-	-	370	399	421	439	-	-	-	-	-	-	-	-	-	-	-	-	-	-	
	Lo PR	107	113	124	132	-	-	117	124	136	145	-	-	123	131	143	152	-	-	129	137	150	159	-	-	133	142	155	165	-	-	-	-	-	-	-	-	-	-	-	-	-	-	-	
	MBh	38.3	39.5	42.7	45.8	-	-	36.5	37.6	40.7	43.7	-	-	35.6	36.7	39.7	42.6	-	-	33.9	34.9	37.7	40.5	-	-	31.4	32.3	35.0	37.5	-	-	-	-	-	-	-	-	-	-	-	-	-	-	-	
	S/T	0.76	0.68	0.51	0.33	-	-	0.80	0.72	0.54	0.35	-	-	0.83	0.74	0.56	0.36	-	-	0.86	0.77	0.58	0.37	-	-	0.87	0.78	0.59	0.38	-	-	-	-	-	-	-	-	-	-	-	-	-	-	-	
1050	ΔT	25	23	19	13	-	-	26	24	19	13	-	-	26	24	20	13	-	-	26	24	19	13	-	-	24	22	18	12	-	-	-	-	-	-	-	-	-	-	-	-	-	-	-	
	kW	2.35	2.40	2.47	2.55	-	-	2.69	2.75	2.84	2.94	3.04	-	-	2.83	2.90	2.99	3.09	-	-	2.95	3.02	3.12	3.23	-	-	3.06	3.13	3.23	3.34	-	-	-	-	-	-	-	-	-	-	-	-	-	-	
	Amps	8.8	9.0	9.2	9.5	-	-	10.2	10.4	10.7	11.1	-	-	10.8	11.1	11.4	11.8	-	-	11.5	11.7	12.1	12.6	-	-	12.1	12.4	12.8	13.3	-	-	-	-	-	-	-	-	-	-	-	-	-	-	-	-
	Hi PR	201	217	229	239	-	-	257	277	292	305	-	-	293	315	333	347	363	-	-	329	355	374	390	-	-	364	392	414	431	-	-	-	-	-	-	-	-	-	-	-	-	-	-	-
	Lo PR	105	111	122	130	-	-	115	122	134	142	-	-	121	129	140	149	-	-	127	135	147	157	-	-	131	139	152	162	-	-	-	-	-	-	-	-	-	-	-	-	-	-	-	-

IDB		OUTDOOR AMBIENT TEMPERATURE														ENTERING INDOOR WET BULB TEMPERATURE																														
		65°F							75°F							85°F							95°F							105°F							115°F									
		59	63	67	71	75	79	83	59	63	67	71	75	79	83	59	63	67	71	75	79	83	59	63	67	71	75	79	83	59	63	67	71	75	79	83	59	63	67	71	75	79	83			
1350	MBh	40.1	41.3	44.7	47.9	-	-	39.1	40.3	43.6	46.8	-	-	38.2	39.3	42.6	45.7	-	-	37.3	38.4	41.5	44.6	-	-	35.4	36.5	39.5	42.4	-	-	-	-	-	-	-	-	-	-	-	-	-	-			
	S/T	0.82	0.74	0.56	0.36	-	-	0.85	0.76	0.58	0.37	-	-	0.87	0.78	0.59	0.38	-	-	0.90	0.81	0.61	0.39	-	-	0.94	0.84	0.63	0.41	-	-	-	-	-	-	-	-	-	-	-	-	-	-	-		
	ΔT	22	21	17	12	-	-	23	21	17	12	-	-	23	21	17	12	-	-	23	21	17	12	-	-	23	21	17	12	-	-	-	-	-	-	-	-	-	-	-	-	-	-	-	-	
	kW	2.40	2.45	2.53	2.61	-	-	2.59	2.64	2.73	2.82	2.92	-	-	2.75	2.81	2.91	3.00	-	-	2.90	2.96	3.06	3.16	-	-	3.02	3.09	3.19	3.30	-	-	-	-	-	-	-	-	-	-	-	-	-	-	-	-
	Amps	9.0	9.2	9.4	9.8	-	-	9.6	9.9	10.2	10.5	10.9	-																																	

COOLING DATA — DSZC160601B / CAPF4961D6*+TXV / MBVC2000A — Low Stage (CONT.)

Table with columns for Outdoor Ambient Temperature (65°F, 75°F, 85°F, 95°F, 105°F, 115°F) and Indoor Wet Bulb Temperature (59, 63, 67, 71, 75, 79, 83, 87, 91, 95, 99, 103, 107, 111, 115, 119, 123, 127, 131, 135, 139, 143, 147, 151, 155, 163, 171). Rows are categorized by IDB (1350, 80, 1050, 85) and Airflow (MBh, S/T, ΔT, kW, Amps, HI PR, Lo PR). Includes a shaded area for AHR1 (TV) conditions.

IDB: Entering Indoor Dry Bulb Temperature. High and low pressures are measured at the liquid and suction service valves. Shaded area reflects AHR1 (TV) conditions. Amps = outdoor unit amps (compressor + fan) kW = Total system power

COOLING DATA — DSZC160601B / CAPF4961D6*+TXV / MBVC2000A — HIGH STAGE (CONT.)

IDB	AIRFLOW	OUTDOOR AMBIENT TEMPERATURE																													
		65°F					75°F					85°F					95°F					105°F					115°F				
		59	63	67	71	75	59	63	67	71	75	59	63	67	71	75	59	63	67	71	75	59	63	67	71	75	59	63	67	71	75
80	2000	MBh	57.8	59.1	63.1	67.5	65.9	55.1	56.3	60.2	64.3	53.8	55.0	58.7	62.8	51.1	52.2	55.8	59.6	47.3	48.4	51.7	55.2	51.1	52.2	55.8	59.6	47.3	48.4	51.7	55.2
		S/T	0.92	0.87	0.71	0.53	0.55	1.00	0.92	0.75	0.56	1.00	0.95	0.77	0.58	1.00	1.00	0.80	0.60	1.00	1.00	0.81	0.61	1.00	1.00	0.80	0.60	1.00	1.00	0.81	0.61
		ΔT	25	24	20	16	21	25	24	21	17	25	24	21	17	23	24	21	16	22	22	19	15	23	24	21	16	22	22	19	15
	1750	kW	3.61	3.68	3.80	3.92	4.22	4.12	4.21	4.34	4.49	4.33	4.43	4.57	4.72	4.51	4.61	4.76	4.92	4.67	4.77	4.93	5.10	4.51	4.61	4.76	4.92	4.67	4.77	4.93	5.10
		Amps	14.1	14.5	15.0	15.5	16.8	16.6	17.0	17.6	18.2	17.7	18.2	18.8	19.5	18.9	19.3	20.0	20.7	20.0	20.5	21.2	22.0	18.9	19.3	20.0	20.7	20.0	20.5	21.2	22.0
		Hi PR	222	239	253	264	296	284	305	322	336	323	348	367	383	364	391	413	431	402	432	456	476	364	391	413	431	402	432	456	476
	1600	Lo PR	106	113	123	131	139	117	124	135	144	122	130	142	151	128	137	149	159	133	141	154	164	128	137	149	159	133	141	154	164
		MBh	56.1	57.4	61.3	65.5	64.0	53.5	54.7	58.4	62.5	52.2	53.4	57.0	60.9	49.6	50.7	54.2	57.9	45.9	46.9	50.2	53.6	49.6	50.7	54.2	57.9	45.9	46.9	50.2	53.6
		S/T	0.88	0.83	0.67	0.50	0.52	0.94	0.88	0.71	0.53	0.97	0.91	0.74	0.55	1.00	0.94	0.77	0.57	1.00	0.95	0.77	0.58	1.00	0.94	0.77	0.57	1.00	0.95	0.77	0.58
	85	2000	ΔT	26	25	22	17	22	26	25	22	18	27	25	22	18	26	25	22	17	24	23	20	16	26	25	22	17	24	23	20
kW			3.53	3.60	3.72	3.83	4.13	4.03	4.12	4.25	4.39	4.24	4.33	4.47	4.62	4.41	4.51	4.66	4.81	4.57	4.67	4.82	4.98	4.41	4.51	4.66	4.81	4.57	4.67	4.82	4.98
Amps			13.8	14.1	14.6	15.1	16.4	16.2	16.6	17.1	17.8	17.3	17.7	18.3	19.0	18.4	18.9	19.5	20.2	19.5	20.0	20.6	21.4	18.4	18.9	19.5	20.2	19.5	20.0	20.6	21.4
1750		Hi PR	216	233	246	256	288	276	297	314	327	315	338	357	373	354	381	402	419	391	421	444	463	354	381	402	419	391	421	444	463
		Lo PR	103	110	120	128	135	113	121	132	140	119	127	138	147	125	133	145	154	129	137	150	160	125	133	145	154	129	137	150	160
		MBh	55.3	56.5	60.4	64.5	63.0	52.7	53.9	57.5	61.5	51.4	52.6	56.1	60.0	48.9	49.9	53.3	57.0	45.3	46.2	49.4	52.8	48.9	49.9	53.3	57.0	45.3	46.2	49.4	52.8
1600		S/T	0.85	0.80	0.65	0.48	0.50	0.90	0.85	0.69	0.52	0.93	0.87	0.71	0.53	0.97	0.91	0.74	0.55	0.98	0.92	0.74	0.56	0.97	0.91	0.74	0.55	0.98	0.92	0.74	0.56
		ΔT	27	26	23	18	23	27	26	23	18	28	26	23	18	27	26	23	18	25	24	21	17	27	26	23	18	25	24	21	17
		kW	3.64	3.71	3.83	3.95	4.25	4.15	4.24	4.38	4.52	4.37	4.46	4.61	4.76	4.55	4.65	4.80	4.96	4.71	4.81	4.97	5.14	4.55	4.65	4.80	4.96	4.71	4.81	4.97	5.14
85		2000	Amps	14.3	14.6	15.1	15.6	16.9	16.7	17.2	17.7	18.4	17.9	18.3	18.9	19.7	19.0	19.5	20.2	20.9	20.2	20.7	21.4	22.2	19.0	19.5	20.2	20.9	20.2	20.7	21.4
	Hi PR		225	242	255	266	299	287	308	326	340	326	351	371	387	367	395	417	435	406	437	461	481	367	395	417	435	406	437	461	481
	Lo PR		107	114	125	133	140	118	125	137	146	124	132	144	153	130	138	151	160	134	143	156	166	130	138	151	160	134	143	156	166
	1750	MBh	57.1	58.2	61.0	65.0	63.5	54.5	55.5	58.1	62.0	53.1	54.2	56.7	60.5	50.5	51.4	53.9	57.5	46.7	47.7	49.9	53.2	50.5	51.4	53.9	57.5	46.7	47.7	49.9	53.2
		S/T	0.92	0.89	0.80	0.65	0.68	0.98	0.95	0.86	0.69	1.00	0.98	0.88	0.72	1.00	1.00	0.92	0.74	1.00	1.00	0.92	0.75	1.00	1.00	0.92	0.74	1.00	1.00	0.92	0.75
		ΔT	28	27	26	22	23	28	28	26	23	28	28	26	23	27	27	26	22	25	25	24	21	27	27	26	22	25	25	24	21
	1600	kW	3.61	3.68	3.80	3.92	4.22	4.12	4.21	4.34	4.49	4.33	4.43	4.57	4.72	4.51	4.61	4.76	4.92	4.67	4.77	4.93	5.10	4.51	4.61	4.76	4.92	4.67	4.77	4.93	5.10
		Amps	14.1	14.5	15.0	15.5	16.8	16.6	17.0	17.6	18.2	17.7	18.2	18.8	19.5	18.9	19.3	20.0	20.7	20.0	20.5	21.2	22.0	18.9	19.3	20.0	20.7	20.0	20.5	21.2	22.0
		Hi PR	222	239	253	264	296	284	305	322	336	323	348	367	383	364	391	413	431	402	432	456	476	364	391	413	431	402	432	456	476
	85	Lo PR	106	113	123	131	139	117	124	135	144	122	130	142	151	128	137	149	159	133	141	154	164	128	137	149	159	133	141	154	164
MBh		56.3	57.3	60.1	64.1	62.6	53.6	54.7	57.3	61.1	52.3	53.3	55.9	59.6	49.7	50.7	53.1	56.6	46.0	46.9	49.2	52.4	49.7	50.7	53.1	56.6	46.0	46.9	49.2	52.4	
S/T		0.89	0.86	0.78	0.63	0.65	0.92	0.89	0.80	0.65	0.98	0.94	0.85	0.69	1.00	0.98	0.88	0.72	1.00	0.99	0.89	0.72	1.00	0.98	0.88	0.72	1.00	0.99	0.89	0.72	
85	ΔT	29	28	27	23	23	29	29	27	23	29	29	27	24	29	29	27	23	26	26	25	22	29	29	27	23	26	26	25	22	
	kW	3.56	3.63	3.75	3.86	4.16	4.06	4.15	4.28	4.42	4.27	4.37	4.51	4.66	4.45	4.55	4.70	4.85	4.60	4.71	4.86	5.02	4.45	4.55	4.70	4.85	4.60	4.71	4.86	5.02	
	Amps	13.9	14.3	14.7	15.3	16.5	16.3	16.7	17.3	17.9	17.5	17.9	18.5	19.2	18.6	19.0	19.7	20.4	19.7	20.2	20.8	21.6	18.6	19.0	19.7	20.4	19.7	20.2	20.8	21.6	
85	Hi PR	219	235	248	259	291	279	300	317	331	318	342	361	377	357	385	406	424	395	425	449	468	357	385	406	424	395	425	449	468	
	Lo PR	104	111	121	129	136	115	122	133	142	120	128	140	149	126	134	147	156	130	139	152	161	126	134	147	156	130	139	152	161	
	MBh	55.8	60.0	62.8	67.0	65.4	56.1	57.2	59.9	63.9	54.7	55.8	58.4	62.3	52.0	53.0	55.5	59.2	48.2	49.1	51.4	54.8	52.0	53.0	55.5	59.2	48.2	49.1	51.4	54.8	
85	S/T	0.97	0.93	0.84	0.68	0.71	1.00	0.99	0.90	0.73	1.00	1.00	0.93	0.75	1.00	1.00	0.96	0.78	1.00	1.00	0.97	0.79	1.00	1.00	0.96	0.78	1.00	1.00	0.97	0.79	
	ΔT	26	26	24	21	21	26	26	25	21	25	26	25	22	24	24	25	21	22	23	23	20	24	24	25	21	22	23	23	20	
	kW	3.64	3.71	3.83	3.95	4.25	4.15	4.24	4.38	4.52	4.37	4.46	4.61	4.76	4.55	4.65	4.80	4.96	4.71	4.81	4.97	5.14	4.55	4.65	4.80	4.96	4.71	4.81	4.97	5.14	
85	Amps	14.3	14.6	15.1	15.6	16.9	16.7	17.2	17.7	18.4	17.9	18.3	18.9	19.7	19.0	19.5	20.2	20.9	20.2	20.7	21.4	22.2	19.0	19.5	20.2	20.9	20.2	20.7	21.4	22.2	
	Hi PR	225	242	255	266	299	287	308	326	340	326	351	371	387	367	395	417	435	406	437	461	481	367	395	417	435	406	437	461	481	
	Lo PR	107	114	125	133	140	118	125	137	146	124	132	144	153	130	138	151	160	134	143	156	166	130	138	151	160	134	143	156	166	
85	MBh	57.1	58.2	61.0	65.0	63.5	54.5	55.5	58.1	62.0	53.1	54.2	56.7	60.5	50.5	51.4	53.9	57.5	46.7	47.7	49.9	53.2	50.5	51.4	53.9	57.5	46.7	47.7	49.9	53.2	
	S/T	0.92	0.89	0.80	0.65	0.68	0.98	0.95	0.86	0.69	1.00	0.98	0.88	0.72	1.00	1.00	0.92	0.74	1.00	1.00											

HEATING DATA

	OUTDOOR AMBIENT TEMPERATURE																	
	65	60	55	50	47	45	40	35	30	25	20	17	15	10	5	0	-5	-10
MBh	20.8	19.7	18.5	17.3	16.6	16.0	14.9	13.7	13.1	12.1	11.1	10.5	10.1	9.1	8.1	7.0	6.0	4.9
ΔT	30.2	28.6	26.9	25.2	24.1	23.3	21.7	20.0	19.0	17.6	16.2	15.3	14.7	13.2	11.7	10.2	8.7	7.1
kW	1.42	1.40	1.37	1.34	1.3	1.31	1.28	1.25	1.37	1.33	1.30	1.28	1.27	1.23	1.20	1.17	1.14	1.10
Amps	6.8	6.3	5.9	5.6	5.4	5.3	5.0	4.7	4.5	4.3	4.1	4.0	4.0	3.8	3.5	3.3	3.1	2.8
COP	4.27	4.13	3.97	3.79	3.67	3.59	3.41	3.21	2.81	2.66	2.51	2.40	2.34	2.15	1.96	1.76	1.54	1.30
EER	14.6	14.1	13.6	13.0	12.5	12.3	11.6	11.0	9.6	9.1	8.6	8.2	8.0	7.4	6.7	6.0	5.3	4.5

	OUTDOOR AMBIENT TEMPERATURE																	
	65	60	55	50	47	45	40	35	30	25	20	17	15	10	5	0	-5	-10
MBh	30.2	28.6	26.9	25.1	24.0	23.3	21.6	19.9	18.7	17.3	15.9	15.0	14.4	13.0	11.5	10.0	8.6	7.0
ΔT	31.9	30.2	28.4	26.6	25.4	24.6	22.9	21.1	19.8	18.3	16.8	15.9	15.3	13.7	12.2	10.6	9.0	7.4
kW	1.86	1.83	1.79	1.75	1.7	1.71	1.68	1.64	1.72	1.68	1.64	1.61	1.60	1.56	1.52	1.48	1.44	1.40
Amps	8.7	8.0	7.5	7.1	6.8	6.7	6.3	6.0	5.7	5.5	5.2	5.1	5.0	4.8	4.5	4.2	3.9	3.5
COP	4.74	4.58	4.40	4.20	4.06	3.97	3.77	3.55	3.18	3.01	2.84	2.72	2.65	2.44	2.22	1.99	1.74	1.47
EER	16.2	15.6	15.0	14.3	13.9	13.6	12.9	12.1	10.9	10.3	9.7	9.3	9.0	8.3	7.6	6.8	6.0	5.0

	OUTDOOR AMBIENT TEMPERATURE																	
	65	60	55	50	47	45	40	35	30	25	20	17	15	10	5	0	-5	-10
MBh	30.3	28.7	27.0	25.3	24.1	23.4	21.7	20.0	18.1	16.7	15.4	14.5	14.0	12.6	11.1	9.7	8.3	6.8
ΔT	35.1	33.2	31.3	29.2	27.9	27.1	25.1	23.2	21.0	19.4	17.8	16.8	16.2	14.5	12.9	11.2	9.6	7.9
kW	2.03	1.98	1.94	1.90	1.9	1.86	1.82	1.78	1.93	1.89	1.84	1.81	1.79	1.75	1.70	1.65	1.61	1.56
Amps	9.8	9.1	8.5	8.0	7.8	7.6	7.2	6.8	6.6	6.3	6.0	5.8	5.8	5.5	5.1	4.8	4.5	4.1
COP	4.38	4.23	4.07	3.89	3.76	3.68	3.49	3.29	2.74	2.60	2.45	2.35	2.29	2.11	1.92	1.72	1.51	1.27
EER	15.0	14.5	13.9	13.3	12.8	12.6	11.9	11.3	9.4	8.9	8.4	8.0	7.8	7.2	6.6	5.9	5.2	4.4

	OUTDOOR AMBIENT TEMPERATURE																	
	65	60	55	50	47	45	40	35	30	25	20	17	15	10	5	0	-5	-10
MBh	43.2	40.9	38.5	36.0	34.4	33.3	31.0	28.6	26.2	24.2	22.2	21.0	20.2	18.1	16.1	14.0	12.0	9.8
ΔT	34.8	33.0	31.0	29.0	27.7	26.8	24.9	23.0	21.1	19.4	17.9	16.9	16.3	14.6	13.0	11.3	9.6	7.9
kW	2.80	2.74	2.69	2.63	2.6	2.57	2.52	2.46	2.39	2.33	2.28	2.24	2.22	2.16	2.11	2.05	2.00	1.94
Amps	13.1	12.1	11.4	10.7	10.3	10.1	9.5	9.1	8.7	8.3	7.9	7.7	7.6	7.2	6.7	6.4	5.9	5.3
COP	4.52	4.37	4.20	4.01	3.88	3.79	3.60	3.40	3.21	3.03	2.86	2.74	2.66	2.45	2.23	2.00	1.75	1.48
EER	15.4	14.9	14.3	13.7	13.2	13.0	12.3	11.6	11.0	10.4	9.8	9.4	9.1	8.4	7.6	6.8	6.0	5.0

Calculations are based on nominal CFM and 70 °F indoor dry bulb.

Note: Shaded area is AHRI Rating Conditions at 47°F outdoor ambient temperature

Amps = Outdoor unit amps (comp.+fan)

kW = Total system power

HEATING DATA (CONT.)

	OUTDOOR AMBIENT TEMPERATURE																	
	65	60	55	50	47	45	40	35	30	25	20	17	15	10	5	0	-5	-10
MBh	43.2	40.9	38.5	36.0	34.4	33.3	30.9	28.5	25.7	23.7	21.8	20.6	19.9	17.8	15.8	13.8	11.8	9.6
ΔT	37.2	35.2	33.1	31.0	29.6	28.7	26.6	24.6	22.1	20.4	18.8	17.8	17.1	15.4	13.6	11.9	10.1	8.3
kW	2.97	2.91	2.85	2.79	2.8	2.72	2.66	2.60	2.71	2.65	2.58	2.54	2.52	2.45	2.38	2.32	2.25	2.18
Amps	14.1	13.1	12.2	11.5	11.1	10.9	10.3	9.7	9.3	8.9	8.5	8.3	8.1	7.7	7.2	6.8	6.3	5.6
COP	4.25	4.11	3.95	3.78	3.66	3.58	3.40	3.21	2.77	2.62	2.48	2.38	2.31	2.13	1.94	1.74	1.53	1.29
EER	14.5	14.0	13.5	12.9	12.5	12.2	11.6	11.0	9.5	9.0	8.5	8.1	7.9	7.3	6.6	5.9	5.2	4.4

	OUTDOOR AMBIENT TEMPERATURE																	
	65	60	55	50	47	45	40	35	30	25	20	17	15	10	5	0	-5	-10
MBh	59.1	55.9	52.6	49.2	47.0	45.5	42.3	39.0	41.1	38.0	34.9	33.0	31.8	28.5	25.3	22.0	18.8	15.4
ΔT	35.3	33.4	31.4	29.4	28.1	27.2	25.3	23.3	24.6	22.7	20.9	19.7	19.0	17.0	15.1	13.2	11.2	9.2
kW	3.81	3.73	3.65	3.58	3.5	3.50	3.42	3.35	3.33	3.25	3.17	3.13	3.10	3.02	2.94	2.86	2.78	2.71
Amps	18.8	17.1	15.6	14.4	13.7	13.3	12.2	11.3	10.6	9.9	9.2	8.8	8.6	7.9	7.0	6.3	5.4	4.3
COP	4.54	4.39	4.22	4.03	3.89	3.81	3.61	3.41	3.61	3.42	3.22	3.09	3.00	2.77	2.52	2.25	1.98	1.67
EER	15.5	15.0	14.4	13.8	13.3	13.0	12.4	11.7	12.3	11.7	11.0	10.6	10.3	9.5	8.6	7.7	6.8	5.7

	OUTDOOR AMBIENT TEMPERATURE																	
	65	60	55	50	47	45	40	35	30	25	20	17	15	10	5	0	-5	-10
MBh	49.9	47.3	44.5	41.6	39.7	38.5	35.8	33.0	30.8	28.4	26.2	24.7	23.8	21.3	18.9	16.5	14.1	11.5
ΔT	40.2	38.1	35.8	33.5	32.0	31.0	28.8	26.5	24.8	22.9	21.1	19.9	19.2	17.2	15.2	13.3	11.3	9.3
kW	3.51	3.44	3.36	3.29	3.3	3.22	3.15	3.08	3.47	3.38	3.30	3.25	3.22	3.13	3.05	2.96	2.88	2.79
Amps	18.3	16.9	15.9	14.9	14.4	14.1	13.3	12.7	12.1	11.6	11.1	10.8	10.7	10.1	9.5	8.9	8.3	7.5
COP	4.17	4.03	3.87	3.70	3.58	3.50	3.32	3.14	2.60	2.46	2.32	2.22	2.16	2.00	1.82	1.63	1.43	1.21
EER	14.2	13.8	13.2	12.6	12.2	12.0	11.4	10.7	8.9	8.4	7.9	7.6	7.4	6.8	6.2	5.6	4.9	4.1

	OUTDOOR AMBIENT TEMPERATURE																	
	65	60	55	50	47	45	40	35	30	25	20	17	15	10	5	0	-5	-10
MBh	71.0	67.2	63.3	59.2	56.5	54.7	50.9	46.9	44.6	41.2	37.9	35.8	34.5	30.9	27.4	23.9	20.4	16.7
ΔT	37.6	35.6	33.5	31.3	29.9	29.0	26.9	24.8	23.6	21.8	20.1	18.9	18.2	16.4	14.5	12.7	10.8	8.8
kW	4.67	4.58	4.49	4.40	4.3	4.30	4.22	4.12	4.62	4.51	4.41	4.34	4.30	4.19	4.08	3.98	3.87	3.76
Amps	22.9	21.2	19.9	18.7	18.0	17.7	16.6	15.8	15.1	14.4	13.7	13.4	13.2	12.6	11.7	11.0	10.2	9.2
COP	4.45	4.30	4.13	3.94	3.81	3.72	3.53	3.33	2.82	2.67	2.52	2.41	2.35	2.16	1.97	1.76	1.54	1.30
EER	15.2	14.7	14.1	13.5	13.0	12.7	12.1	11.4	9.6	9.1	8.6	8.2	8.0	7.4	6.7	6.0	5.3	4.4

Calculations are based on nominal CFM and 70 °F indoor dry bulb.

Note: Shaded area is AHRI Rating Conditions at 47°F outdoor ambient temperature

Amps = Outdoor unit amps (comp.+fan)

kW = Total system power

OUTDOOR UNIT	INDOOR UNITS		COOLING CAPACITY (BTU/H)				TVA RATINGS ³		HEATING CAPACITY			CFM	AHRI #
	COILS/AIR HANDLERS	FURNACES	TOTAL	SENS.	SEER ¹	EER ²	TOTAL	SENS.	Hi	HSPF ⁴	Low		
DSZC16 0241A*	AVPTC30C14A*		23,400	18,200	15.00	11.80	21,600	18,400	22,400	8.50	14,400	875	5933795
	CA*F3636*6D*+TXV		24,000	18,700	16.00	12.50	22,200	18,900	23,000	9.20	15,000	825	4392818
	CA*F3636*6D*+MBVC1200**-1A*+TXV		24,000	18,700	16.00	12.50	22,200	18,900	23,000	9.50	15,000	875	4392819
	CA*F3636*6D*+TXV	G*VC80805C*B*	24,000	18,700	16.00	12.00	22,200	18,900	23,000	9.00	15,000	810	5038666
	CA*F3636*6D*+TXV	G*VC80604B*B*	24,000	18,700	16.00	12.00	22,200	18,900	23,000	9.00	15,000	820	5038676
	CA*F3636*6D*+TXV	G*VC81005C*B*	24,000	18,700	16.00	12.00	22,200	18,900	23,000	9.00	15,000	810	5038677
	CA*F3636*6D*+TXV	ADVC80805C*B*	24,000	18,700	16.00	12.00	22,200	18,900	23,000	9.00	15,000	810	5038733
	CA*F3636*6D*+TXV	A*VC80603B*B*	24,000	18,700	16.00	12.00	22,200	18,900	24,000	9.00	15,000	880	5038747
	CA*F3636*6D*+TXV	A*VC80805C*B*	24,000	18,700	16.00	12.00	22,200	18,900	23,000	9.00	15,000	810	5038769
	CA*F3636*6D*+TXV	ADVC81005C*B*	24,000	18,700	16.00	12.00	22,200	18,900	23,000	9.00	15,000	810	5038770
	CA*F3636*6D*+TXV	A*VC80604B*B*	24,000	18,700	16.00	12.00	22,200	18,900	23,000	9.00	15,000	820	5038775
	CA*F3636*6D*+TXV	A*VC81005C*B*	24,000	18,700	16.00	12.00	22,200	18,900	23,000	9.00	15,000	810	5038776
	CA*F3636*6D*+TXV	G*VC950453BxB*	23,000	17,900	15.50	12.00	21,200	18,100	24,000	9.20	15,000	825	5622956
	CA*F3636*6D*+TXV	G*VC950704CXB*	24,000	18,700	16.00	12.50	22,200	18,900	23,000	9.20	15,000	825	5622962
	CA*F3636*6D*+TXV	G*VM960603BxB*	23,000	17,900	15.50	12.00	21,200	18,100	24,000	9.20	15,000	825	5622966
	CA*F3636*6D*+TXV	A*VC950714CXB*	23,400	18,200	16.00	12.00	21,600	18,400	23,000	9.20	15,000	825	6498021
	CA*F3636*6D*+TXV	G*VC950714CXB*	23,400	18,200	16.00	12.00	21,600	18,400	23,000	9.20	15,000	825	6943314
	CA*F3636*6D*+TXV	A*VC950704CXB*	24,000	18,700	16.00	12.50	22,200	18,900	23,000	9.20	15,000	825	7043194
	CA*F3636*6D*+TXV	G*VC960403BNA*	23,000	17,900	15.50	12.00	21,200	18,100	24,000	9.00	15,000	800	7360630
	CA*F3636*6D*+TXV	G*VC960603BNA*	23,000	17,900	15.50	12.00	21,200	18,100	24,000	9.00	15,000	800	7360633
	CA*F3636*6D*+TXV	G*VC960803BNA*	23,000	17,900	15.50	12.00	21,200	18,100	24,000	9.00	15,000	800	7360636
	CA*F3636*6D*+TXV	G*VM970603BNA*	23,000	17,900	15.50	12.00	21,200	18,100	24,000	9.00	15,000	800	7360659
	CA*F3636*6D*+TXV	G*VM970803BNA*	23,000	17,900	15.50	12.00	21,200	18,100	24,000	9.00	15,000	800	7360662
	CA*F3636*6D*+TXV	A*VC960403BNA*	23,000	17,900	15.50	12.00	21,200	18,100	24,000	9.00	15,000	800	7360682
	CA*F3636*6D*+TXV	A*VC960603BNA*	23,000	17,900	15.50	12.00	21,200	18,100	24,000	9.00	15,000	800	7360685
	CA*F3636*6D*+TXV	A*VC960803BNA*	23,000	17,900	15.50	12.00	21,200	18,100	24,000	9.00	15,000	800	7360688
	CA*F3636*6D*+TXV	A*VM970603BNA*	23,000	17,900	15.50	12.00	21,200	18,100	24,000	9.00	15,000	800	7360711
	CA*F3636*6D*+TXV	A*VM970803BNA*	23,000	17,900	15.50	12.00	21,200	18,100	24,000	9.00	15,000	800	7360714
	CA*F3636*6D*+TXV	G*EC960302BNA*	23,000	17,900	15.50	12.00	21,200	18,100	23,600	9.00	15,000	800	7368121
	CA*F3636*6D*+TXV	G*EC960402BNA*	23,000	17,900	15.50	12.00	21,200	18,100	24,000	9.00	15,000	850	7368126
	CA*F3636*6D*+TXV	G*EC960603BNA*	23,000	17,900	15.50	12.00	21,200	18,100	23,600	9.00	15,000	800	7368131
	CA*F3636*6D*+TXV	G*EC960803BNA*	23,000	17,900	15.50	12.00	21,200	18,100	23,600	9.00	15,000	800	7368136
	CA*F3636*6D*+TXV	A*EC960302BNA*	23,000	17,900	15.50	12.00	21,200	18,100	23,600	9.00	15,000	800	7368156
	CA*F3636*6D*+TXV	A*EC960402BNA*	23,000	17,900	15.50	12.00	21,200	18,100	24,000	9.00	15,000	850	7368161
	CA*F3636*6D*+TXV	A*EC960603BNA*	23,000	17,900	15.50	12.00	21,200	18,100	23,600	9.00	15,000	800	7368166
	CA*F3636*6D*+TXV	A*EC960803BNA*	23,000	17,900	15.50	12.00	21,200	18,100	23,600	9.00	15,000	800	7368171
	CA*F3642*6D*+MBVC1600**-1A*+TXV		24,000	18,700	16.00	12.50	22,200	18,900	24,000	9.20	15,000	800	3880698
	CA*F3642*6D*+TXV	G*VC80805C*B*	23,800	18,500	16.00	12.00	22,000	18,700	24,000	9.00	15,000	810	5038622
	CA*F3642*6D*+TXV	G*VC81005C*B*	23,800	18,500	16.00	12.00	22,000	18,700	24,000	9.00	15,000	810	5038624
	CA*F3642*6D*+TXV	G*VC80604B*B*	24,000	18,700	16.00	12.00	22,200	18,900	24,000	9.00	15,000	820	5038631
	CA*F3642*6D*+TXV	A*VC80805C*B*	23,800	18,500	16.00	12.00	22,000	18,700	24,000	9.00	15,000	810	5038734
	CA*F3642*6D*+TXV	A*VC81005C*B*	23,800	18,500	16.00	12.00	22,000	18,700	24,000	9.00	15,000	810	5038737
	CA*F3642*6D*+TXV	A*VC80604B*B*	24,000	18,700	16.00	12.00	22,200	18,900	24,000	9.00	15,000	820	5038748
	CA*F3642*6D*+TXV	A*VC80603B*B*	24,000	18,700	16.00	12.00	22,200	18,900	24,000	9.00	15,000	880	5038777
	CA*F3642*6D*+TXV	ADVC81005C*B*	24,000	18,700	16.00	12.00	22,200	18,900	24,000	9.00	15,000	810	5038778
	CA*F3642*6D*+TXV	ADVC80805C*B*	24,000	18,700	16.00	12.00	22,200	18,900	24,000	9.00	15,000	810	5038788
	CA*F3642*6D*+TXV	G*VC950453BxB*	24,000	18,700	15.50	12.00	22,200	18,900	24,000	9.20	15,000	825	5622957
	CA*F3642*6D*+TXV	G*VM960603BxB*	24,000	18,700	15.50	12.00	22,200	18,900	24,000	9.20	15,000	825	5622967

See Notes on Page 24.

OUTDOOR UNIT	INDOOR UNITS		COOLING CAPACITY (BTU/H)				TVA RATINGS ³		HEATING CAPACITY			CFM	AHRI #
	COILS/AIR HANDLERS	FURNACES	TOTAL	SENS.	SEER ¹	EER ²	TOTAL	SENS.	Hi	HSPF ⁴	Low		
DSZC16 0241A* (cont.)	CA*F3642*6D*+TXV	G*VC960403BNA*	24,000	18,700	15.50	12.00	22,200	18,900	24,000	9.00	15,000	800	7360631
	CA*F3642*6D*+TXV	G*VC960603BNA*	24,000	18,700	15.50	12.00	22,200	18,900	24,000	9.00	15,000	800	7360634
	CA*F3642*6D*+TXV	G*VC960803BNA*	24,000	18,700	15.50	12.00	22,200	18,900	24,000	9.00	15,000	800	7360637
	CA*F3642*6D*+TXV	G*VM970603BNA*	24,000	18,700	15.50	12.00	22,200	18,900	24,000	9.00	15,000	800	7360660
	CA*F3642*6D*+TXV	G*VM970803BNA*	24,000	18,700	15.50	12.00	22,200	18,900	24,000	9.00	15,000	800	7360663
	CA*F3642*6D*+TXV	A*VC960403BNA*	24,000	18,700	15.50	12.00	22,200	18,900	24,000	9.00	15,000	800	7360683
	CA*F3642*6D*+TXV	A*VC960603BNA*	24,000	18,700	15.50	12.00	22,200	18,900	24,000	9.00	15,000	800	7360686
	CA*F3642*6D*+TXV	A*VC960803BNA*	24,000	18,700	15.50	12.00	22,200	18,900	24,000	9.00	15,000	800	7360689
	CA*F3642*6D*+TXV	A*VM970603BNA*	24,000	18,700	15.50	12.00	22,200	18,900	24,000	9.00	15,000	800	7360712
	CA*F3642*6D*+TXV	A*VM970803BNA*	24,000	18,700	15.50	12.00	22,200	18,900	24,000	9.00	15,000	800	7360715
	CA*F3642*6D*+TXV	G*EC960302BNA*	23,600	18,400	15.50	12.00	21,800	18,600	23,600	9.00	15,000	800	7368122
	CA*F3642*6D*+TXV	G*EC960402BNA*	24,000	18,700	15.50	12.00	22,200	18,900	24,000	9.00	15,000	850	7368127
	CA*F3642*6D*+TXV	G*EC960603BNA*	23,600	18,400	15.50	12.00	21,800	18,600	23,600	9.00	15,000	800	7368132
	CA*F3642*6D*+TXV	G*EC960803BNA*	23,600	18,400	15.50	12.00	21,800	18,600	23,600	9.00	15,000	800	7368137
	CA*F3642*6D*+TXV	A*EC960302BNA*	23,600	18,400	15.50	12.00	21,800	18,600	23,600	9.00	15,000	800	7368157
	CA*F3642*6D*+TXV	A*EC960402BNA*	24,000	18,700	15.50	12.00	22,200	18,900	24,000	9.00	15,000	850	7368162
	CA*F3642*6D*+TXV	A*EC960603BNA*	23,600	18,400	15.50	12.00	21,800	18,600	23,600	9.00	15,000	800	7368167
	CA*F3642*6D*+TXV	A*EC960803BNA*	23,600	18,400	15.50	12.00	21,800	18,600	23,600	9.00	15,000	800	7368172
	CA*F3743*6D*+TXV	G*EC960302BNA*	23,800	18,500	15.50	12.50	22,000	18,700	23,800	9.00	15,000	800	7368123
	CA*F3743*6D*+TXV	G*EC960402BNA*	24,000	18,700	15.50	12.00	22,200	18,900	24,000	9.00	15,000	850	7368128
	CA*F3743*6D*+TXV	G*EC960603BNA*	23,800	18,500	15.50	12.50	22,000	18,700	23,800	9.00	15,000	800	7368133
	CA*F3743*6D*+TXV	G*EC960803BNA*	23,800	18,500	15.50	12.50	22,000	18,700	23,800	9.00	15,000	800	7368138
	CA*F3743*6D*+TXV	A*EC960302BNA*	23,800	18,500	15.50	12.50	22,000	18,700	23,800	9.00	15,000	800	7368158
	CA*F3743*6D*+TXV	A*EC960402BNA*	24,000	18,700	15.50	12.00	22,200	18,900	24,000	9.00	15,000	850	7368163
	CA*F3743*6D*+TXV	A*EC960603BNA*	23,800	18,500	15.50	12.50	22,000	18,700	23,800	9.00	15,000	800	7368168
	CA*F3743*6D*+TXV	A*EC960803BNA*	23,800	18,500	15.50	12.50	22,000	18,700	23,800	9.00	15,000	800	7368173
	CHPF3636B6C*+MBVC1200**-1A*+TXV		24,000	18,700	16.00	12.50	22,200	18,900	23,000	9.20	15,000	850	3654487
	CHPF3636B6C*+TXV	G*VC80805C*B*	24,000	18,700	16.00	12.00	22,200	18,900	24,000	9.00	15,000	810	5038679
	CHPF3636B6C*+TXV	G*VC81005C*B*	24,000	18,700	16.00	12.00	22,200	18,900	24,000	9.00	15,000	810	5038694
	CHPF3636B6C*+TXV	G*VC80604B*B*	24,000	18,700	16.00	12.00	22,200	18,900	24,000	9.00	15,000	820	5038709
	CHPF3636B6C*+TXV	A*VC80805C*B*	24,000	18,700	16.00	12.00	22,200	18,900	24,000	9.00	15,000	810	5038779
	CHPF3636B6C*+TXV	A*VC81005C*B*	24,000	18,700	16.00	12.00	22,200	18,900	24,000	9.00	15,000	810	5038789
	CHPF3636B6C*+TXV	A*VC80604B*B*	24,000	18,700	16.00	12.00	22,200	18,900	24,000	9.00	15,000	820	5038798
	CHPF3636B6C*+TXV	G*VC950453BxB*	24,000	18,700	15.50	12.00	22,200	18,900	24,000	9.20	15,000	825	5622958
	CHPF3636B6C*+TXV	G*VM960603BxB*	24,000	18,700	15.50	12.00	22,200	18,900	24,000	9.20	15,000	825	5622968
	CHPF3636B6C*+TXV	A*VC950453BxB*	24,000	18,700	15.50	12.00	22,200	18,900	24,000	9.20	15,000	825	6498022
	CHPF3636B6C*+TXV	A*VM960603BxB*	24,000	18,700	15.50	12.00	22,200	18,900	24,000	9.20	15,000	825	6498023
	CHPF3636B6C*+TXV	G*EC960302BNA*	23,000	17,900	15.00	11.50	21,200	18,100	23,000	9.00	13,000	800	7368124
	CHPF3636B6C*+TXV	G*EC960402BNA*	23,000	17,900	15.00	11.50	21,200	18,100	23,000	9.00	13,000	850	7368129
	CHPF3636B6C*+TXV	G*EC960603BNA*	23,000	17,900	15.00	11.50	21,200	18,100	23,000	9.00	13,000	800	7368134
	CHPF3636B6C*+TXV	G*EC960803BNA*	23,000	17,900	15.00	11.50	21,200	18,100	23,000	9.00	13,000	800	7368139
	CHPF3636B6C*+TXV	A*EC960302BNA*	23,000	17,900	15.00	11.50	21,200	18,100	23,000	9.00	13,000	800	7368159
	CHPF3636B6C*+TXV	A*EC960402BNA*	23,000	17,900	15.00	11.50	21,200	18,100	23,000	9.00	13,000	850	7368164
	CHPF3636B6C*+TXV	A*EC960603BNA*	23,000	17,900	15.00	11.50	21,200	18,100	23,000	9.00	13,000	800	7368169
	CHPF3636B6C*+TXV	A*EC960803BNA*	23,000	17,900	15.00	11.50	21,200	18,100	23,000	9.00	13,000	800	7368174
CHPF3642C6C*+MBVC1600**-1A*+TXV		24,000	18,700	16.00	12.50	22,200	18,900	24,000	9.20	15,000	800	3654501	
CHPF3642C6C*+TXV	G*VC80805C*B*	24,000	18,700	16.00	12.00	22,200	18,900	24,000	9.00	15,000	810	5038603	
CHPF3642C6C*+TXV	G*VC80604B*B*	24,000	18,700	16.00	12.00	22,200	18,900	24,000	9.00	15,000	820	5038623	

See Notes on Page 24.

OUTDOOR UNIT	INDOOR UNITS		COOLING CAPACITY (BTU/h)				TVA RATINGS ³		HEATING CAPACITY			CFM	AHRI #
	COILS/AIR HANDLERS	FURNACES	TOTAL	SENS.	SEER ¹	EER ²	TOTAL	SENS.	HI	HSPF ⁴	LOW		
DSZC16 0241A* (cont.)	CHPF3642C6C*+TXV	G*VC81005C*B*	24,000	18,700	16.00	12.00	22,200	18,900	24,000	9.00	15,000	810	5038695
	CHPF3642C6C*+TXV	A*VC80805C*B*	24,000	18,700	16.00	12.00	22,200	18,900	24,000	9.00	15,000	810	5038724
	CHPF3642C6C*+TXV	A*VC80604B*B*	24,000	18,700	16.00	12.00	22,200	18,900	24,000	9.00	15,000	820	5038735
	CHPF3642C6C*+TXV	A*VC81005C*B*	24,000	18,700	16.00	12.00	22,200	18,900	24,000	9.00	15,000	810	5038790
	CHPF3642C6C*+TXV	G*VC950453BXB*	24,000	18,700	15.50	12.00	22,200	18,900	24,000	9.20	15,000	825	5622959
	CHPF3642C6C*+TXV	G*VC950704CXB*	24,000	18,700	16.00	12.50	22,200	18,900	24,000	9.20	15,000	825	5622963
	CHPF3642C6C*+TXV	G*VM960603BXB*	24,000	18,700	15.50	12.00	22,200	18,900	24,000	9.20	15,000	825	5622969
	CHPF3642C6C*+TXV	A*VC950453BXB*	24,000	18,700	15.50	12.00	22,200	18,900	24,000	9.20	15,000	825	6498024
	CHPF3642C6C*+TXV	A*VC950704CXB*	24,000	18,700	16.00	12.50	22,200	18,900	24,000	9.20	15,000	825	6498025
	CHPF3642C6C*+TXV	A*VM960603BXB*	24,000	18,700	15.50	12.00	22,200	18,900	24,000	9.20	15,000	825	6498026
	CHPF3642C6C*+TXV	G*VC960403BNA*	24,000	18,700	15.50	12.00	22,200	18,900	24,000	9.00	15,000	800	7360632
	CHPF3642C6C*+TXV	G*VC960603BNA*	24,000	18,700	15.50	12.00	22,200	18,900	24,000	9.00	15,000	800	7360635
	CHPF3642C6C*+TXV	G*VC960803BNA*	24,000	18,700	15.50	12.00	22,200	18,900	24,000	9.00	15,000	800	7360638
	CHPF3642C6C*+TXV	G*VM970603BNA*	24,000	18,700	15.50	12.00	22,200	18,900	24,000	9.00	15,000	800	7360661
	CHPF3642C6C*+TXV	G*VM970803BNA*	24,000	18,700	15.50	12.00	22,200	18,900	24,000	9.00	15,000	800	7360664
	CHPF3642C6C*+TXV	A*VC960403BNA*	24,000	18,700	15.50	12.00	22,200	18,900	24,000	9.00	15,000	800	7360684
	CHPF3642C6C*+TXV	A*VC960603BNA*	24,000	18,700	15.50	12.00	22,200	18,900	24,000	9.00	15,000	800	7360687
	CHPF3642C6C*+TXV	A*VC960803BNA*	24,000	18,700	15.50	12.00	22,200	18,900	24,000	9.00	15,000	800	7360690
	CHPF3642C6C*+TXV	A*VM970603BNA*	24,000	18,700	15.50	12.00	22,200	18,900	24,000	9.00	15,000	800	7360713
	CHPF3642C6C*+TXV	A*VM970803BNA*	24,000	18,700	15.50	12.00	22,200	18,900	24,000	9.00	15,000	800	7360716
	CHPF3642C6C*+TXV	G*EC960302BNA*	23,800	18,500	15.50	12.50	22,000	18,700	23,800	9.00	15,000	800	7368125
	CHPF3642C6C*+TXV	G*EC960402BNA*	24,000	18,700	15.50	12.00	22,200	18,900	24,000	9.00	15,000	850	7368130
	CHPF3642C6C*+TXV	G*EC960603BNA*	23,800	18,500	15.50	12.50	22,000	18,700	23,800	9.00	15,000	800	7368135
	CHPF3642C6C*+TXV	G*EC960803BNA*	23,800	18,500	15.50	12.50	22,000	18,700	23,800	9.00	15,000	800	7368140
	CHPF3642C6C*+TXV	A*EC960302BNA*	23,800	18,500	15.50	12.50	22,000	18,700	23,800	9.00	15,000	800	7368160
	CHPF3642C6C*+TXV	A*EC960402BNA*	24,000	18,700	15.50	12.00	22,200	18,900	24,000	9.00	15,000	850	7368165
	CHPF3642C6C*+TXV	A*EC960603BNA*	23,800	18,500	15.50	12.50	22,000	18,700	23,800	9.00	15,000	800	7368170
	CHPF3642C6C*+TXV	A*EC960803BNA*	23,800	18,500	15.50	12.50	22,000	18,700	23,800	9.00	15,000	800	7368175
	CHPF3743C6B*+TXV	G*VC80805C*B*	24,000	18,700	16.00	12.00	22,200	18,900	24,000	9.00	15,000	810	5038625
	CHPF3743C6B*+TXV	G*VC81005C*B*	24,000	18,700	16.00	12.00	22,200	18,900	24,000	9.00	15,000	810	5038680
	CHPF3743C6B*+TXV	A*VC80805C*B*	24,000	18,700	16.00	12.00	22,200	18,900	24,000	9.00	15,000	810	5038739
	CHPF3743C6B*+TXV	A*VC81005C*B*	24,000	18,700	16.00	12.00	22,200	18,900	24,000	9.00	15,000	810	5038780
	CHPF3743C6B*+TXV	G*VC950704CXB*	24,000	18,700	16.00	12.50	22,200	18,900	24,000	9.20	15,000	825	5622964
	CHPF3743C6B*+TXV	A*VC950704CXB*	24,000	18,700	16.00	12.50	22,200	18,900	24,000	9.20	15,000	825	6498027
	CHPF3743D6B*+MBVC1600**-1A*+TXV		24,000	18,700	16.00	12.50	22,200	18,900	23,000	9.20	15,000	850	3654519
	CSCF3036N6D*+TXV	G*VC950453BXB*	23,400	18,200	15.00	12.00	21,600	18,400	23,000	9.10	15,000	800	5622960
	CSCF3036N6D*+TXV	G*VC950704CXB*	24,000	18,700	16.00	12.50	22,200	18,900	24,000	9.10	15,000	875	5622965
	CSCF3036N6D*+TXV	A*VC950453BXB*	23,400	18,200	15.00	12.00	21,600	18,400	23,000	9.10	15,000	800	6498028
	CSCF3036N6D*+TXV	A*VC950704CXB*	24,000	18,700	16.00	12.50	22,200	18,900	24,000	9.10	15,000	875	6498029
	CSCF3642N6D*+TXV	G*VC950453BXB*	24,000	18,700	15.50	12.00	22,200	18,900	24,000	9.20	15,000	800	5622961
CSCF3642N6D*+TXV	A*VC950453BXB*	24,000	18,700	15.50	12.00	22,200	18,900	24,000	9.20	15,000	800	6498030	

¹ Seasonal Energy Efficiency Ratio; Certified per ARI 210/240 @ 80°F/ 67°F/ 95°F

² Energy Efficiency Ratio @ 80°F/ 67°F/ 95°F

³ TVA Rating: BTU/h @ 75°F/ 63°F - 95°F

⁴ HSPF = Heating Seasonal Performance Factor

Notes

- Always check the S&R plate for electrical data on the unit being installed.
- When matching outdoor unit to indoor unit, use the piston supplied with the outdoor unit or that specified on the piston kit chart supplied with the indoor unit.
- EEP - Order from Service Dept. Part No. B13707-38 or new Solid State Board B13707-35S. Part No. B13707-38 is not interchangeable with B13707-35S. The Goodman Gas Furnace contains the EEP cooling time delay

OUTDOOR UNIT	INDOOR UNITS		COOLING CAPACITY (BTU/H)				TVA RATINGS ³		HEATING CAPACITY			CFM	AHRI #
	COILS/AIR HANDLERS	FURNACES	TOTAL	SENS.	SEER ¹	EER ²	TOTAL	SENS.	HI	HSPF ⁴	Low		
DSZC16 0361A*	AVPTC42D14A*		34,600	26,200	16.00	12.50	32,200	25,000	34,400	9.20	21,000	1,200	5933258
	AVPTC48D14A*		36,000	27,200	16.00	12.50	33,400	26,000	34,400	9.20	21,000	1,200	5933259
	CA*F3642*6D*+MBVC1600**-1A*+TXV		34,600	26,200	16.00	12.50	32,200	25,000	34,400	9.20	21,000	1,200	6498031
	CA*F3743*6D*+MBVC1600**-1A*+TXV		34,600	26,200	16.00	12.50	32,200	25,000	34,400	9.70	21,000	1,200	4415183
	CA*F3743*6D*+MBVC2000**-1A*+TXV		34,600	26,200	16.00	12.50	32,200	25,000	34,400	9.20	21,000	1,200	4415184
	CA*F3743*6D*+TXV	G*VC80805C*B*	34,200	25,800	15.00	12.00	31,800	24,800	34,000	9.20	20,400	1,080	5038627
	CA*F3743*6D*+TXV	G*VC80604B*B*	34,200	25,800	15.50	11.50	31,800	24,800	34,000	9.20	21,000	1,260	5038632
	CA*F3743*6D*+TXV	A*VC80603B*B*	34,200	25,800	15.50	11.50	31,800	24,800	34,000	9.20	21,000	1,170	5038741
	CA*F3743*6D*+TXV	A*VC80805C*B*	34,200	25,800	15.00	12.00	31,800	24,800	34,000	9.20	20,400	1,080	5038742
	CA*F3743*6D*+TXV	ADV80805C*B*	34,200	25,800	15.00	12.00	31,800	24,800	34,000	9.20	20,400	1,090	5038743
	CA*F3743*6D*+TXV	A*VC80604B*B*	34,200	25,800	15.50	11.50	31,800	24,800	34,000	9.20	21,000	1,260	5038751
	CA*F3743*6D*+TXV	G*VC950453BXB*	34,600	26,200	15.50	11.50	32,200	25,000	34,000	9.20	21,000	1,200	5622970
	CA*F3743*6D*+TXV	G*VC950704CXB*	34,600	26,200	16.00	12.00	32,200	25,000	34,000	9.20	21,000	1,200	5622976
	CA*F3743*6D*+TXV	A*VC950714CXB*	34,000	25,800	16.00	12.00	31,600	24,600	34,000	9.20	21,000	1,200	5622982
	CA*F3743*6D*+TXV	G*VC950714CXB*	34,000	25,800	16.00	12.00	31,600	24,600	34,000	9.20	21,000	1,200	5622983
	CA*F3743*6D*+TXV	G*VC950905DXB*	34,600	26,200	16.00	12.50	32,200	25,000	34,400	9.20	21,000	1,200	5622986
	CA*F3743*6D*+TXV	A*VC950915DXB*	34,600	26,200	16.00	12.50	32,200	25,000	34,400	9.20	21,000	1,200	5622995
	CA*F3743*6D*+TXV	G*VC950915DXB*	34,600	26,200	16.00	12.50	32,200	25,000	34,400	9.20	21,000	1,200	5622996
	CA*F3743*6D*+TXV	G*VC951155DXB*	34,600	26,200	16.00	12.50	32,200	25,000	34,400	9.20	21,000	1,200	5622999
	CA*F3743*6D*+TXV	G*VM960603BXB*	34,600	26,200	15.50	11.50	32,200	25,000	34,000	9.20	21,000	1,200	5623006
	CA*F3743*6D*+TXV	A*VM960604CXB*	34,000	25,800	16.00	12.00	31,600	24,600	34,000	9.20	21,000	1,200	5623010
	CA*F3743*6D*+TXV	G*VM960604CXB*	34,000	25,800	16.00	12.00	31,600	24,600	34,000	9.20	21,000	1,200	5623011
	CA*F3743*6D*+TXV	G*VM960805DXB*	34,600	26,200	16.00	12.50	32,200	25,000	34,400	9.20	21,000	1,200	5623018
	CA*F3743*6D*+TXV	G*VM961005DXB*	34,600	26,200	16.00	12.50	32,200	25,000	34,400	9.20	21,000	1,200	5623023
	CA*F3743*6D*+TXV	G*VM961155DXB*	34,600	26,200	16.00	12.50	32,200	25,000	34,400	9.20	21,000	1,200	5623028
	CA*F3743*6D*+TXV	G*VM960805CXB*	34,000	25,800	15.00	12.50	31,600	24,600	34,000	8.50	21,000	1,230	5684795
	CA*F3743*6D*+TXV	A*VC81005C*B*	34,600	26,200	15.00	12.00	32,200	25,000	34,000	9.20	20,400	1,080	6498032
	CA*F3743*6D*+TXV	A*VC950453BXB*	34,600	26,200	15.50	11.50	32,200	25,000	34,000	9.20	21,000	1,200	6498033
	CA*F3743*6D*+TXV	A*VC950704CXB*	34,600	26,200	16.00	12.00	32,200	25,000	34,000	9.20	21,000	1,200	6498034
	CA*F3743*6D*+TXV	A*VC950905CXB*	34,000	25,800	16.00	12.00	31,600	24,600	34,000	9.00	21,000	1,200	6498035
	CA*F3743*6D*+TXV	A*VC950905DXB*	34,600	26,200	16.00	12.50	32,200	25,000	34,400	9.20	21,000	1,200	6498036
	CA*F3743*6D*+TXV	A*VC951155DXB*	34,600	26,200	16.00	12.50	32,200	25,000	34,400	9.20	21,000	1,200	6498037
	CA*F3743*6D*+TXV	A*VM960603BXB*	34,600	26,200	15.50	11.50	32,200	25,000	34,000	9.20	21,000	1,200	6498038
	CA*F3743*6D*+TXV	A*VM960805CXB*	34,000	25,800	15.00	12.50	31,600	24,600	34,000	8.50	21,000	1,230	6498039
	CA*F3743*6D*+TXV	A*VM960805DXB*	34,600	26,200	16.00	12.50	32,200	25,000	34,400	9.20	21,000	1,200	6498040
	CA*F3743*6D*+TXV	A*VM961005DXB*	34,600	26,200	16.00	12.50	32,200	25,000	34,400	9.20	21,000	1,200	6498041
	CA*F3743*6D*+TXV	A*VM961155DXB*	34,600	26,200	16.00	12.50	32,200	25,000	34,400	9.20	21,000	1,200	6498042
	CA*F3743*6D*+TXV	ADV81005C*B*	34,600	26,200	15.00	12.00	32,200	25,000	34,000	9.20	20,400	1,110	6498043
	CA*F3743*6D*+TXV	G*VC81005C*B*	34,600	26,200	15.00	12.00	32,200	25,000	34,000	9.20	20,400	1,080	6498044
	CA*F3743*6D*+TXV	G*VC960403BNA*	34,600	26,200	15.50	11.50	32,200	25,000	34,000	9.00	21,000	1,150	7360639
CA*F3743*6D*+TXV	G*VC960603BNA*	34,600	26,200	15.50	11.50	32,200	25,000	34,000	9.00	21,000	1,150	7360642	
CA*F3743*6D*+TXV	G*VC960803BNA*	34,600	26,200	15.50	11.50	32,200	25,000	34,000	9.00	21,000	1,150	7360645	
CA*F3743*6D*+TXV	G*VC960804CNA*	34,600	26,200	15.50	12.50	32,200	25,000	34,000	9.00	21,000	1,200	7360648	
CA*F3743*6D*+TXV	G*VM970603BNA*	34,600	26,200	15.50	11.50	32,200	25,000	34,000	9.00	21,000	1,150	7360665	
CA*F3743*6D*+TXV	G*VM970803BNA*	34,600	26,200	15.50	11.50	32,200	25,000	34,000	9.00	21,000	1,150	7360668	
CA*F3743*6D*+TXV	G*VM970804CNA*	34,600	26,200	15.50	12.50	32,200	25,000	34,000	9.00	21,000	1,200	7360671	
CA*F3743*6D*+TXV	A*VC960403BNA*	34,600	26,200	15.50	11.50	32,200	25,000	34,000	9.00	21,000	1,150	7360691	

See Notes on Page 24.

OUTDOOR UNIT	INDOOR UNITS		COOLING CAPACITY (BTU/H)				TVA RATINGS ³		HEATING CAPACITY			CFM	AHRI #
	COILS/AIR HANDLERS	FURNACES	TOTAL	SENS.	SEER ¹	EER ²	TOTAL	SENS.	HI	HSPF ⁴	Low		
DSZC16 0361A* (cont.)	CA*F3743*6D*+TXV	A*VC960603BNA*	34,600	26,200	15.50	11.50	32,200	25,000	34,000	9.00	21,000	1,150	7360694
	CA*F3743*6D*+TXV	A*VC960803BNA*	34,600	26,200	15.50	11.50	32,200	25,000	34,000	9.00	21,000	1,150	7360697
	CA*F3743*6D*+TXV	A*VC960804CNA*	34,600	26,200	15.50	12.50	32,200	25,000	34,000	9.00	21,000	1,200	7360700
	CA*F3743*6D*+TXV	A*VM970603BNA*	34,600	26,200	15.50	11.50	32,200	25,000	34,000	9.00	21,000	1,150	7360717
	CA*F3743*6D*+TXV	A*VM970803BNA*	34,600	26,200	15.50	11.50	32,200	25,000	34,000	9.00	21,000	1,150	7360720
	CA*F3743*6D*+TXV	A*VM970804CNA*	34,600	26,200	15.50	12.50	32,200	25,000	34,000	9.00	21,000	1,200	7360723
	CA*F3743*6D*+TXV	G*VC961005CNA*	34,600	26,200	15.50	12.50	32,200	25,000	34,000	9.00	21,000	1,200	7362544
	CA*F3743*6D*+TXV	G*VM971005CNA*	34,600	26,200	15.50	12.50	32,200	25,000	34,000	9.00	21,000	1,200	7362554
	CA*F3743*6D*+TXV	A*VC961005CNA*	34,600	26,200	15.50	12.50	32,200	25,000	34,000	9.00	21,000	1,200	7362566
	CA*F3743*6D*+TXV	A*VM971005CNA*	34,600	26,200	15.50	12.50	32,200	25,000	34,000	9.00	21,000	1,200	7362577
	CA*F3743*6D*+TXV	G*EC960603BNA*	34,600	26,200	15.00	11.50	32,200	25,000	34,000	9.00	21,000	1,150	7368141
	CA*F3743*6D*+TXV	G*EC960803BNA*	34,600	26,200	15.00	11.50	32,200	25,000	34,000	9.00	21,000	1,150	7368144
	CA*F3743*6D*+TXV	G*EC961004CNA*	34,600	26,200	15.50	12.50	32,200	25,000	34,000	9.00	21,000	1,250	7368147
	CA*F3743*6D*+TXV	A*EC960603BNA*	34,600	26,200	15.00	11.50	32,200	25,000	34,000	9.00	21,000	1,150	7368176
	CA*F3743*6D*+TXV	A*EC960803BNA*	34,600	26,200	15.00	11.50	32,200	25,000	34,000	9.00	21,000	1,150	7368179
	CA*F3743*6D*+TXV	A*EC961004CNA*	34,600	26,200	15.50	12.50	32,200	25,000	34,000	9.00	21,000	1,250	7368182
	CA*F4860*6D*+MBVC1600**-1A*+TXV		35,000	26,600	16.00	12.50	32,400	25,400	34,400	9.20	21,000	1,200	3880756
	CA*F4860*6D*+MBVC2000**-1A*+TXV		35,000	26,600	16.00	12.50	32,400	25,400	34,400	9.20	21,000	1,200	3880762
	CA*F4860*6D*+TXV	G*VC80805C*B*	35,000	26,600	15.50	12.00	32,400	25,400	34,000	9.20	20,400	1,080	5038667
	CA*F4860*6D*+TXV	G*VC80604B*B*	35,000	26,600	15.50	11.50	32,400	25,400	34,000	9.20	21,000	1,260	5038681
	CA*F4860*6D*+TXV	ADV80805C*B*	35,000	26,600	15.50	12.00	32,400	25,400	34,000	9.20	20,400	1,090	5038744
	CA*F4860*6D*+TXV	A*VC80603B*B*	34,600	26,200	15.50	12.00	32,200	25,000	34,000	9.20	21,000	1,170	5038752
	CA*F4860*6D*+TXV	A*VC80805C*B*	35,000	26,600	15.50	12.00	32,400	25,400	34,000	9.20	20,400	1,080	5038771
	CA*F4860*6D*+TXV	A*VC80604B*B*	35,000	26,600	15.50	11.50	32,400	25,400	34,000	9.20	21,000	1,260	5038781
	CA*F4860*6D*+TXV	G*VC950453BXB*	35,000	26,600	15.50	11.50	32,400	25,400	34,000	9.20	21,000	1,200	5622971
	CA*F4860*6D*+TXV	G*VC950704CXB*	35,000	26,600	16.00	12.00	32,400	25,400	34,000	9.20	21,000	1,200	5622977
	CA*F4860*6D*+TXV	A*VC950714CXB*	34,000	25,800	16.00	12.00	31,600	24,600	34,000	9.20	21,000	1,200	5622984
	CA*F4860*6D*+TXV	G*VC950714CXB*	34,000	25,800	16.00	12.00	31,600	24,600	34,000	9.20	21,000	1,200	5622985
	CA*F4860*6D*+TXV	G*VC950905DXB*	35,000	26,600	16.00	12.50	32,400	25,400	34,400	9.20	21,000	1,200	5622987
	CA*F4860*6D*+TXV	A*VC950915DXB*	35,000	26,600	16.00	12.50	32,400	25,400	34,400	9.20	21,000	1,200	5622997
	CA*F4860*6D*+TXV	G*VC950915DXB*	35,000	26,600	16.00	12.50	32,400	25,400	34,400	9.20	21,000	1,200	5622998
	CA*F4860*6D*+TXV	G*VC951155DXB*	35,000	26,600	16.00	12.50	32,400	25,400	34,400	9.20	21,000	1,200	5623000
	CA*F4860*6D*+TXV	G*VM960603BXB*	35,000	26,600	15.50	11.50	32,400	25,400	34,000	9.20	21,000	1,200	5623007
	CA*F4860*6D*+TXV	A*VM960604CXB*	34,000	25,800	16.00	12.00	31,600	24,600	34,000	9.20	21,000	1,200	5623012
	CA*F4860*6D*+TXV	G*VM960604CXB*	34,000	25,800	16.00	12.00	31,600	24,600	34,000	9.20	21,000	1,200	5623013
	CA*F4860*6D*+TXV	G*VM960805DXB*	35,000	26,600	16.00	12.50	32,400	25,400	34,400	9.20	21,000	1,200	5623019
	CA*F4860*6D*+TXV	G*VM961005DXB*	35,000	26,600	16.00	12.50	32,400	25,400	34,400	9.20	21,000	1,200	5623024
	CA*F4860*6D*+TXV	G*VM961155DXB*	35,000	26,600	16.00	12.50	32,400	25,400	34,400	9.20	21,000	1,200	5623029
	CA*F4860*6D*+TXV	A*VC81005C*B*	35,000	26,600	15.00	12.00	32,400	25,400	34,000	9.20	20,400	1,080	6498045
	CA*F4860*6D*+TXV	A*VC950453BXB*	35,000	26,600	15.50	11.50	32,400	25,400	34,000	9.20	21,000	1,200	6498046
CA*F4860*6D*+TXV	A*VC950704CXB*	35,000	26,600	16.00	12.00	32,400	25,400	34,000	9.20	21,000	1,200	6498047	
CA*F4860*6D*+TXV	A*VC950905DXB*	35,000	26,600	16.00	12.50	32,400	25,400	34,400	9.20	21,000	1,200	6498048	
CA*F4860*6D*+TXV	A*VC951155DXB*	35,000	26,600	16.00	12.50	32,400	25,400	34,400	9.20	21,000	1,200	6498049	
CA*F4860*6D*+TXV	A*VM960603BXB*	35,000	26,600	15.50	11.50	32,400	25,400	34,000	9.20	21,000	1,200	6498050	
CA*F4860*6D*+TXV	A*VM960805DXB*	35,000	26,600	16.00	12.50	32,400	25,400	34,400	9.20	21,000	1,200	6498051	
CA*F4860*6D*+TXV	A*VM961005DXB*	35,000	26,600	16.00	12.50	32,400	25,400	34,400	9.20	21,000	1,200	6498052	
CA*F4860*6D*+TXV	A*VM961155DXB*	35,000	26,600	16.00	12.50	32,400	25,400	34,400	9.20	21,000	1,200	6498053	

See Notes on Page 29.

OUTDOOR UNIT	INDOOR UNITS		COOLING CAPACITY (BTU/H)				TVA RATINGS ³		HEATING CAPACITY			CFM	AHRI #
	COILS/AIR HANDLERS	FURNACES	TOTAL	SENS.	SEER ¹	EER ²	TOTAL	SENS.	HI	HSPF ⁴	Low		
DSZC16 0361A* (cont.)	CA*F4860*6D*+TXV	ADVC81005C*B*	35,000	26,600	15.00	12.00	32,400	25,400	34,000	9.20	20,400	1,110	6498054
	CA*F4860*6D*+TXV	G*VC81005C*B*	35,000	26,600	15.00	12.00	32,400	25,400	34,000	9.20	20,400	1,080	6498055
	CA*F4860*6D*+TXV	G*VC960403BNA*	35,000	26,600	15.50	11.50	32,400	25,400	34,000	9.00	21,000	1,150	7360640
	CA*F4860*6D*+TXV	G*VC960603BNA*	35,000	26,600	15.50	11.50	32,400	25,400	34,000	9.00	21,000	1,150	7360643
	CA*F4860*6D*+TXV	G*VC960803BNA*	35,000	26,600	15.50	11.50	32,400	25,400	34,000	9.00	21,000	1,150	7360646
	CA*F4860*6D*+TXV	G*VC960804CNA*	35,000	26,600	15.50	12.50	32,400	25,400	34,000	9.00	21,000	1,200	7360649
	CA*F4860*6D*+TXV	G*VM970603BNA*	35,000	26,600	15.50	11.50	32,400	25,400	34,000	9.00	21,000	1,150	7360666
	CA*F4860*6D*+TXV	G*VM970803BNA*	35,000	26,600	15.50	11.50	32,400	25,400	34,000	9.00	21,000	1,150	7360669
	CA*F4860*6D*+TXV	G*VM970804CNA*	35,000	26,600	15.50	12.50	32,400	25,400	34,000	9.00	21,000	1,200	7360672
	CA*F4860*6D*+TXV	A*VC960403BNA*	35,000	26,600	15.50	11.50	32,400	25,400	34,000	9.00	21,000	1,150	7360692
	CA*F4860*6D*+TXV	A*VC960603BNA*	35,000	26,600	15.50	11.50	32,400	25,400	34,000	9.00	21,000	1,150	7360695
	CA*F4860*6D*+TXV	A*VC960803BNA*	35,000	26,600	15.50	11.50	32,400	25,400	34,000	9.00	21,000	1,150	7360698
	CA*F4860*6D*+TXV	A*VC960804CNA*	35,000	26,600	15.50	12.50	32,400	25,400	34,000	9.00	21,000	1,200	7360701
	CA*F4860*6D*+TXV	A*VM970603BNA*	35,000	26,600	15.50	11.50	32,400	25,400	34,000	9.00	21,000	1,150	7360718
	CA*F4860*6D*+TXV	A*VM970803BNA*	35,000	26,600	15.50	11.50	32,400	25,400	34,000	9.00	21,000	1,150	7360721
	CA*F4860*6D*+TXV	A*VM970804CNA*	35,000	26,600	15.50	12.50	32,400	25,400	34,000	9.00	21,000	1,200	7360724
	CA*F4860*6D*+TXV	G*VC961005CNA*	35,000	26,600	15.50	12.50	32,400	25,400	34,000	9.00	21,000	1,200	7362545
	CA*F4860*6D*+TXV	G*VM971005CNA*	35,000	26,600	15.50	12.50	32,400	25,400	34,000	9.00	21,000	1,200	7362556
	CA*F4860*6D*+TXV	A*VC961005CNA*	35,000	26,600	15.50	12.50	32,400	25,400	34,000	9.00	21,000	1,200	7362568
	CA*F4860*6D*+TXV	A*VM971005CNA*	35,000	26,600	15.50	12.50	32,400	25,400	34,000	9.00	21,000	1,200	7362578
	CA*F4860*6D*+TXV	G*EC960603BNA*	35,000	26,600	15.00	11.50	32,400	25,400	34,000	9.00	21,000	1,150	7368142
	CA*F4860*6D*+TXV	G*EC960803BNA*	35,000	26,600	15.00	11.50	32,400	25,400	34,000	9.00	21,000	1,150	7368145
	CA*F4860*6D*+TXV	G*EC961004CNA*	35,000	26,600	15.50	12.50	32,400	25,400	34,000	9.00	21,000	1,250	7368148
	CA*F4860*6D*+TXV	A*EC960603BNA*	35,000	26,600	15.00	11.50	32,400	25,400	34,000	9.00	21,000	1,150	7368177
	CA*F4860*6D*+TXV	A*EC960803BNA*	35,000	26,600	15.00	11.50	32,400	25,400	34,000	9.00	21,000	1,150	7368180
	CA*F4860*6D*+TXV	A*EC961004CNA*	35,000	26,600	15.50	12.50	32,400	25,400	34,000	9.00	21,000	1,250	7368183
	CA*F4961*6D*+TXV	A*VC950905DXB*	34,600	26,200	16.00	12.50	32,200	25,000	34,400	9.20	21,000	1,150	5622988
	CA*F4961*6D*+TXV	G*VC950905DXB*	34,600	26,200	16.00	12.50	32,200	25,000	34,400	9.20	21,000	1,150	5622989
	CHPF3636B6C*+TXV	A*VC80604B*B*	34,000	25,800	14.50	12.00	31,600	24,600	34,000	8.50	20,000	1,220	6498056
	CHPF3642C6C*+MBVC1600**-1A*+TXV		34,600	26,200	16.00	12.50	32,200	25,000	34,400	9.20	21,000	1,200	3654592
	CHPF3642D6C*+MBVC2000**-1A*+TXV		34,600	26,200	16.00	12.50	32,200	25,000	34,400	9.20	21,000	1,200	3654594
	CHPF3642D6C*+TXV	G*VC950905DXB*	34,600	26,200	16.00	12.50	32,200	25,000	34,400	9.20	21,000	1,150	5622990
	CHPF3642D6C*+TXV	G*VC951155DXB*	34,600	26,200	16.00	12.50	32,200	25,000	34,400	9.20	21,000	1,150	5623001
	CHPF3642D6C*+TXV	G*VM960805DXB*	34,600	26,200	16.00	12.50	32,200	25,000	34,400	9.20	21,000	1,150	5623020
	CHPF3642D6C*+TXV	G*VM961005DXB*	34,600	26,200	16.00	12.50	32,200	25,000	34,400	9.20	21,000	1,150	5623025
	CHPF3642D6C*+TXV	G*VM961155DXB*	34,600	26,200	16.00	12.50	32,200	25,000	34,400	9.20	21,000	1,150	5623030
	CHPF3743C6B*+MBVC1600**-1A*+TXV		34,600	26,200	16.00	12.50	32,200	25,000	34,400	9.20	21,000	1,200	3654600
	CHPF3743C6B*+TXV	G*VC80805C*B*	35,000	26,600	15.00	12.00	32,400	25,400	34,000	9.20	20,400	1,080	5038634
	CHPF3743C6B*+TXV	G*VC80604B*B*	34,600	26,200	15.50	11.50	32,200	25,000	34,000	9.20	21,000	1,260	5038696
	CHPF3743C6B*+TXV	A*VC80805C*B*	35,000	26,600	15.00	12.00	32,400	25,400	34,000	9.20	20,400	1,080	5038753
CHPF3743C6B*+TXV	A*VC80604B*B*	34,600	26,200	15.50	11.50	32,200	25,000	34,000	9.20	21,000	1,260	5038791	
CHPF3743C6B*+TXV	G*VC950453BxB*	34,600	26,200	15.50	11.50	32,200	25,000	34,000	9.20	21,000	1,200	5622972	
CHPF3743C6B*+TXV	G*VC950704CXB*	34,600	26,200	16.00	12.00	32,200	25,000	34,000	9.20	21,000	1,200	5622978	
CHPF3743C6B*+TXV	G*VC950905DXB*	34,600	26,200	16.00	12.50	32,200	25,000	34,400	9.20	21,000	1,150	5622991	
CHPF3743C6B*+TXV	G*VC951155DXB*	34,600	26,200	16.00	12.50	32,200	25,000	34,400	9.20	21,000	1,150	5623002	
CHPF3743C6B*+TXV	G*VM960603BxB*	34,600	26,200	15.50	11.50	32,200	25,000	34,000	9.20	21,000	1,200	5623008	
CHPF3743C6B*+TXV	A*VM960604CXB*	34,000	25,800	16.00	12.00	31,600	24,600	34,000	9.20	21,000	1,200	5623014	

See Notes on Page 29.

OUTDOOR UNIT	INDOOR UNITS		COOLING CAPACITY (BTU/H)				TVA RATINGS ³		HEATING CAPACITY			CFM	AHRI #
	COILS/AIR HANDLERS	FURNACES	TOTAL	SENS.	SEER ¹	EER ²	TOTAL	SENS.	HI	HSPF ⁴	Low		
DSZC16 0361A* (cont.)	CHPF3743C6B*+TXV	G*VM960604CXB*	34,000	25,800	16.00	12.00	31,600	24,600	34,000	9.20	21,000	1,200	5623015
	CHPF3743C6B*+TXV	G*VM960805DXB*	34,600	26,200	16.00	12.50	32,200	25,000	34,400	9.20	21,000	1,150	5623021
	CHPF3743C6B*+TXV	G*VM961005DXB*	34,600	26,200	16.00	12.50	32,200	25,000	34,400	9.20	21,000	1,150	5623026
	CHPF3743C6B*+TXV	G*VM961155DXB*	34,600	26,200	16.00	12.50	32,200	25,000	34,400	9.20	21,000	1,150	5623031
	CHPF3743C6B*+TXV	A*VC81005C*B*	34,600	26,200	15.00	12.00	32,200	25,000	34,000	9.20	20,400	1,080	6498057
	CHPF3743C6B*+TXV	A*VC950453BxB*	34,600	26,200	15.50	11.50	32,200	25,000	34,000	9.20	21,000	1,200	6498058
	CHPF3743C6B*+TXV	A*VC950704CXB*	34,600	26,200	16.00	12.00	32,200	25,000	34,000	9.20	21,000	1,200	6498059
	CHPF3743C6B*+TXV	A*VC950905DXB*	34,600	26,200	16.00	12.50	32,200	25,000	34,400	9.20	21,000	1,150	6498060
	CHPF3743C6B*+TXV	A*VC951155DXB*	34,600	26,200	16.00	12.50	32,200	25,000	34,400	9.20	21,000	1,150	6498061
	CHPF3743C6B*+TXV	A*VM960603BxB*	34,600	26,200	15.50	11.50	32,200	25,000	34,000	9.20	21,000	1,200	6498062
	CHPF3743C6B*+TXV	A*VM960805DXB*	34,600	26,200	16.00	12.50	32,200	25,000	34,400	9.20	21,000	1,150	6498063
	CHPF3743C6B*+TXV	A*VM961005DXB*	34,600	26,200	16.00	12.50	32,200	25,000	34,400	9.20	21,000	1,150	6498064
	CHPF3743C6B*+TXV	A*VM961155DXB*	34,600	26,200	16.00	12.50	32,200	25,000	34,400	9.20	21,000	1,150	6498065
	CHPF3743C6B*+TXV	G*VC81005C*B*	34,600	26,200	15.00	12.00	32,200	25,000	34,000	9.20	20,400	1,080	6498066
	CHPF3743C6B*+TXV	G*VC960403BNA*	34,600	26,200	15.50	11.50	32,200	25,000	34,000	9.00	21,000	1,150	7360641
	CHPF3743C6B*+TXV	G*VC960603BNA*	34,600	26,200	15.50	11.50	32,200	25,000	34,000	9.00	21,000	1,150	7360644
	CHPF3743C6B*+TXV	G*VC960803BNA*	34,600	26,200	15.50	11.50	32,200	25,000	34,000	9.00	21,000	1,150	7360647
	CHPF3743C6B*+TXV	G*VM970603BNA*	34,600	26,200	15.50	11.50	32,200	25,000	34,000	9.00	21,000	1,150	7360667
	CHPF3743C6B*+TXV	G*VM970803BNA*	34,600	26,200	15.50	11.50	32,200	25,000	34,000	9.00	21,000	1,150	7360670
	CHPF3743C6B*+TXV	A*VC960403BNA*	34,600	26,200	15.50	11.50	32,200	25,000	34,000	9.00	21,000	1,150	7360693
	CHPF3743C6B*+TXV	A*VC960603BNA*	34,600	26,200	15.50	11.50	32,200	25,000	34,000	9.00	21,000	1,150	7360696
	CHPF3743C6B*+TXV	A*VC960803BNA*	34,600	26,200	15.50	11.50	32,200	25,000	34,000	9.00	21,000	1,150	7360699
	CHPF3743C6B*+TXV	A*VM970603BNA*	34,600	26,200	15.50	11.50	32,200	25,000	34,000	9.00	21,000	1,150	7360719
	CHPF3743C6B*+TXV	A*VM970803BNA*	34,600	26,200	15.50	11.50	32,200	25,000	34,000	9.00	21,000	1,150	7360722
	CHPF3743C6B*+TXV	G*EC960603BNA*	34,600	26,200	15.00	11.50	32,200	25,000	34,000	9.00	21,000	1,150	7368143
	CHPF3743C6B*+TXV	G*EC960803BNA*	34,600	26,200	15.00	11.50	32,200	25,000	34,000	9.00	21,000	1,150	7368146
	CHPF3743C6B*+TXV	A*EC960603BNA*	34,600	26,200	15.00	11.50	32,200	25,000	34,000	9.00	21,000	1,150	7368178
	CHPF3743C6B*+TXV	A*EC960803BNA*	34,600	26,200	15.00	11.50	32,200	25,000	34,000	9.00	21,000	1,150	7368181
	CHPF3743D6B*+MBVC2000**-1A*+TXV		34,600	26,200	16.00	12.50	32,200	25,000	34,400	9.20	21,000	1,200	3654615
	CHPF3743D6B*+TXV	G*VC80604B*B*	34,600	26,200	15.50	11.50	32,200	25,000	34,000	9.20	21,000	1,260	5038604
	CHPF3743D6B*+TXV	G*VC80805C*B*	34,200	25,800	15.50	12.00	31,800	24,800	34,000	9.20	20,400	1,080	5038682
	CHPF3743D6B*+TXV	A*VC80604B*B*	34,600	26,200	15.50	11.50	32,200	25,000	34,000	9.20	21,000	1,260	5038726
	CHPF3743D6B*+TXV	A*VC80805C*B*	34,200	25,800	15.50	12.00	31,800	24,800	34,000	9.20	20,400	1,080	5038783
	CHPF3743D6B*+TXV	G*VC950453BxB*	34,600	26,200	15.50	11.50	32,200	25,000	34,000	9.20	21,000	1,200	5622973
	CHPF3743D6B*+TXV	G*VC950704CXB*	34,600	26,200	16.00	12.00	32,200	25,000	34,000	9.20	21,000	1,200	5622979
	CHPF3743D6B*+TXV	G*VC950905DXB*	34,600	26,200	16.00	12.50	32,200	25,000	34,400	9.20	21,000	1,150	5622992
	CHPF3743D6B*+TXV	G*VC951155DXB*	34,600	26,200	16.00	12.50	32,200	25,000	34,400	9.20	21,000	1,150	5623003
	CHPF3743D6B*+TXV	G*VM960603BxB*	34,600	26,200	15.50	11.50	32,200	25,000	34,000	9.20	21,000	1,200	5623009
	CHPF3743D6B*+TXV	A*VM960604CXB*	34,000	25,800	16.00	12.00	31,600	24,600	34,000	9.20	21,000	1,200	5623016
	CHPF3743D6B*+TXV	G*VM960604CXB*	34,000	25,800	16.00	12.00	31,600	24,600	34,000	9.20	21,000	1,200	5623017
CHPF3743D6B*+TXV	G*VM960805DXB*	34,600	26,200	16.00	12.50	32,200	25,000	34,400	9.20	21,000	1,150	5623022	
CHPF3743D6B*+TXV	G*VM961005DXB*	34,600	26,200	16.00	12.50	32,200	25,000	34,400	9.20	21,000	1,150	5623027	
CHPF3743D6B*+TXV	G*VM961155DXB*	34,600	26,200	16.00	12.50	32,200	25,000	34,400	9.20	21,000	1,150	5623032	
CHPF3743D6B*+TXV	A*VC81005C*B*	34,600	26,200	15.00	12.00	32,200	25,000	34,000	9.20	20,400	1,080	6498067	
CHPF3743D6B*+TXV	A*VC950453BxB*	34,600	26,200	15.50	11.50	32,200	25,000	34,000	9.20	21,000	1,200	6498068	
CHPF3743D6B*+TXV	A*VC950704CXB*	34,600	26,200	16.00	12.00	32,200	25,000	34,000	9.20	21,000	1,200	6498069	
CHPF3743D6B*+TXV	A*VC950905DXB*	34,600	26,200	16.00	12.50	32,200	25,000	34,400	9.20	21,000	1,150	6498070	

See Notes on Page 29.

OUTDOOR UNIT	INDOOR UNITS		COOLING CAPACITY (BTU/h)				TVA RATINGS ³		HEATING CAPACITY			CFM	AHRI #
	COILS/AIR HANDLERS	FURNACES	TOTAL	SENS.	SEER ¹	EER ²	TOTAL	SENS.	HI	HSPF ⁴	Low		
DSZC16 0361A* (cont.)	CHPF3743D6B*+TXV	A*VC951155DXB*	34,600	26,200	16.00	12.50	32,200	25,000	34,400	9.20	21,000	1,150	6498071
	CHPF3743D6B*+TXV	A*VM960603BXB*	34,600	26,200	15.50	11.50	32,200	25,000	34,000	9.20	21,000	1,200	6498072
	CHPF3743D6B*+TXV	A*VM960805DXB*	34,600	26,200	16.00	12.50	32,200	25,000	34,400	9.20	21,000	1,150	6498073
	CHPF3743D6B*+TXV	A*VM961005DXB*	34,600	26,200	16.00	12.50	32,200	25,000	34,400	9.20	21,000	1,150	6498074
	CHPF3743D6B*+TXV	A*VM961155DXB*	34,600	26,200	16.00	12.50	32,200	25,000	34,400	9.20	21,000	1,150	6498075
	CHPF3743D6B*+TXV	G*VC81005C*B*	34,600	26,200	15.00	12.00	32,200	25,000	34,000	9.20	20,400	1,080	6498076
	CHPF3743D6B*+TXV	G*EC961004CNA*	34,600	26,200	15.50	12.50	32,200	25,000	34,000	9.00	21,000	1,250	7368149
	CHPF3743D6B*+TXV	A*EC961004CNA*	34,600	26,200	15.50	12.50	32,200	25,000	34,000	9.00	21,000	1,250	7368184
	CHPF4860D6D*+TXV	G*VC960804CNA*	35,000	26,600	15.50	12.50	32,400	25,400	34,000	9.00	21,000	1,200	7360650
	CHPF4860D6D*+TXV	G*VM970804CNA*	35,000	26,600	15.50	12.50	32,400	25,400	34,000	9.00	21,000	1,200	7360673
	CHPF4860D6D*+TXV	A*VC960804CNA*	35,000	26,600	15.50	12.50	32,400	25,400	34,000	9.00	21,000	1,200	7360702
	CHPF4860D6D*+TXV	A*VM970804CNA*	35,000	26,600	15.50	12.50	32,400	25,400	34,000	9.00	21,000	1,200	7360725
	CHPF4860D6D*+TXV	G*VC961005CNA*	35,000	26,600	15.50	12.50	32,400	25,400	34,000	9.00	21,000	1,200	7362547
	CHPF4860D6D*+TXV	G*VM971005CNA*	35,000	26,600	15.50	12.50	32,400	25,400	34,000	9.00	21,000	1,200	7362557
	CHPF4860D6D*+TXV	A*VC961005CNA*	35,000	26,600	15.50	12.50	32,400	25,400	34,000	9.00	21,000	1,200	7362569
	CHPF4860D6D*+TXV	A*VM971005CNA*	35,000	26,600	15.50	12.50	32,400	25,400	34,000	9.00	21,000	1,200	7362580
	CSCF3642N6D*+TXV	G*VC950453BXB*	34,600	26,200	15.50	11.50	32,200	25,000	34,000	9.20	21,000	1,200	5622974
	CSCF3642N6D*+TXV	G*VC950704CXB*	34,600	26,200	16.00	12.00	32,200	25,000	34,000	9.20	21,000	1,225	5622980
	CSCF3642N6D*+TXV	G*VC950905DXB*	34,600	26,200	16.00	12.00	32,200	25,000	34,400	9.20	21,000	1,150	5622993
	CSCF3642N6D*+TXV	G*VC951155DXB*	34,600	26,200	16.00	12.00	32,200	25,000	34,400	9.20	21,000	1,225	5623004
	CSCF3642N6D*+TXV	A*VC950453BXB*	34,600	26,200	15.50	11.50	32,200	25,000	34,000	9.20	21,000	1,200	6498077
	CSCF3642N6D*+TXV	A*VC950704CXB*	34,600	26,200	16.00	12.00	32,200	25,000	34,000	9.20	21,000	1,225	6498078
	CSCF3642N6D*+TXV	A*VC950905DXB*	34,600	26,200	16.00	12.00	32,200	25,000	34,400	9.20	21,000	1,150	6498079
	CSCF3642N6D*+TXV	A*VC951155DXB*	34,600	26,200	16.00	12.00	32,200	25,000	34,400	9.20	21,000	1,225	6498080
	CSCF4860N6D*+TXV	G*VC950453BXB*	35,000	26,600	15.50	11.50	32,400	25,400	34,000	9.20	21,000	1,200	5622975
	CSCF4860N6D*+TXV	G*VC950704CXB*	35,000	26,600	16.00	12.00	32,400	25,400	34,000	9.20	21,000	1,225	5622981
	CSCF4860N6D*+TXV	G*VC950905DXB*	35,000	26,600	16.00	12.50	32,400	25,400	34,400	9.20	21,000	1,150	5622994
	CSCF4860N6D*+TXV	G*VC951155DXB*	35,000	26,600	16.00	12.50	32,400	25,400	34,400	9.20	21,000	1,225	5623005
	CSCF4860N6D*+TXV	A*VC950453BXB*	35,000	26,600	15.50	11.50	32,400	25,400	34,000	9.20	21,000	1,200	6498081
	CSCF4860N6D*+TXV	A*VC950704CXB*	35,000	26,600	16.00	12.00	32,400	25,400	34,000	9.20	21,000	1,225	6498082
CSCF4860N6D*+TXV	A*VC950905DXB*	35,000	26,600	16.00	12.50	32,400	25,400	34,400	9.20	21,000	1,150	6498083	
CSCF4860N6D*+TXV	A*VC951155DXB*	35,000	26,600	16.00	12.50	32,400	25,400	34,400	9.20	21,000	1,225	6498084	

¹ Seasonal Energy Efficiency Ratio; Certified per ARI 210/240 @ 80°F/ 67°F/ 95°F

² Energy Efficiency Ratio @ 80°F/ 67°F/ 95°F

³ TVA Rating: BTU/h @ 75°F/ 63°F - 95°F

⁴ HSPF = Heating Seasonal Performance Factor

Notes

- Always check the S&R plate for electrical data on the unit being installed.
- When matching outdoor unit to indoor unit, use the piston supplied with the outdoor unit or that specified on the piston kit chart supplied with the indoor unit.
- EEP - Order from Service Dept. Part No. B13707-38 or new Solid State Board B13707-35S. Part No. B13707-38 is not interchangeable with B13707-35S. The Goodman Gas Furnace contains the EEP cooling time delay

OUTDOOR UNIT	INDOOR UNITS		COOLING CAPACITY (BTU/H)				TVA RATINGS ³		HEATING CAPACITY			CFM	AHRI #
	COILS/AIR HANDLERS	FURNACES	TOTAL	SENS.	SEER ¹	EER ²	TOTAL	SENS.	HI	HSPF ⁴	Low		
DSZC16 0481A*	AVPTC48D14A*		46,000	34,000	15.50	12.00	42,500	34,600	46,000	9.20	34,000	1,550	5933260
	CA*F4961*6D*+MBVC1600**-1A*+TXV		47,000	34,800	15.50	12.50	43,500	35,200	47,000	9.20	34,000	1,550	4431870
	CA*F4961*6D*+MBVC2000**-1A*+TXV		47,500	35,200	16.00	13.00	44,000	35,600	47,000	9.70	34,000	1,550	4431871
	CA*F4961*6D*+TXV	G*VC81005C*B*	47,500	35,200	15.50	12.00	44,000	35,600	46,000	9.20	30,000	1,610	5589999
	CA*F4961*6D*+TXV	G*VC950704CXB*	47,500	35,200	16.00	12.50	44,000	35,600	47,000	9.20	34,000	1,500	5623033
	CA*F4961*6D*+TXV	A*VC950714CXB*	47,500	35,200	16.00	12.50	44,000	35,600	47,000	9.20	34,000	1,500	5623036
	CA*F4961*6D*+TXV	G*VC950714CXB*	47,500	35,200	16.00	12.50	44,000	35,600	47,000	9.20	34,000	1,500	5623037
	CA*F4961*6D*+TXV	G*VC950905CXB*	47,500	35,200	16.00	12.50	44,000	35,600	47,000	9.20	34,000	1,500	5623038
	CA*F4961*6D*+TXV	G*VC950905DXB*	47,500	35,200	16.00	12.50	44,000	35,600	47,000	9.20	34,000	1,500	5623041
	CA*F4961*6D*+TXV	A*VC950915DXB*	47,500	35,200	16.00	12.50	44,000	35,600	47,000	9.20	34,000	1,500	5623044
	CA*F4961*6D*+TXV	G*VC950915DXB*	47,500	35,200	16.00	12.50	44,000	35,600	47,000	9.20	34,000	1,500	5623045
	CA*F4961*6D*+TXV	G*VC951155DXB*	47,500	35,200	16.00	12.50	44,000	35,600	47,000	9.20	34,000	1,500	5623046
	CA*F4961*6D*+TXV	A*VM960604CXB*	47,500	35,200	16.00	12.50	44,000	35,600	47,000	9.20	34,000	1,500	5623049
	CA*F4961*6D*+TXV	G*VM960604CXB*	47,500	35,200	16.00	12.50	44,000	35,600	47,000	9.20	34,000	1,500	5623050
	CA*F4961*6D*+TXV	G*VM960805CXB*	47,500	35,200	16.00	12.50	44,000	35,600	47,000	9.20	34,000	1,500	5623053
	CA*F4961*6D*+TXV	G*VM960805DXB*	47,500	35,200	16.00	12.50	44,000	35,600	47,000	9.20	34,000	1,500	5623055
	CA*F4961*6D*+TXV	G*VM961005DXB*	47,500	35,200	16.00	12.50	44,000	35,600	47,000	9.20	34,000	1,500	5623057
	CA*F4961*6D*+TXV	G*VM961155DXB*	47,500	35,200	16.00	12.50	44,000	35,600	47,000	9.20	34,000	1,500	5623059
	CA*F4961*6D*+TXV	A*VC80805C*B*	47,000	34,800	15.50	12.00	43,500	35,200	46,000	9.20	30,000	1,510	6498085
	CA*F4961*6D*+TXV	A*VC81005C*B*	47,500	35,200	15.50	12.00	44,000	35,600	46,000	9.20	30,000	1,610	6498086
	CA*F4961*6D*+TXV	A*VC950704CXB*	47,500	35,200	16.00	12.50	44,000	35,600	47,000	9.20	34,000	1,500	6498087
	CA*F4961*6D*+TXV	A*VC950905CXB*	47,500	35,200	16.00	12.50	44,000	35,600	47,000	9.20	34,000	1,500	6498088
	CA*F4961*6D*+TXV	A*VC950905DXB*	47,500	35,200	16.00	12.50	44,000	35,600	47,000	9.20	34,000	1,500	6498089
	CA*F4961*6D*+TXV	A*VC951155DXB*	47,500	35,200	16.00	12.50	44,000	35,600	47,000	9.20	34,000	1,500	6498090
	CA*F4961*6D*+TXV	A*VM960805CXB*	47,500	35,200	16.00	12.50	44,000	35,600	47,000	9.20	34,000	1,500	6498091
	CA*F4961*6D*+TXV	A*VM960805DXB*	47,500	35,200	16.00	12.50	44,000	35,600	47,000	9.20	34,000	1,500	6498092
	CA*F4961*6D*+TXV	A*VM961005DXB*	47,500	35,200	16.00	12.50	44,000	35,600	47,000	9.20	34,000	1,500	6498093
	CA*F4961*6D*+TXV	A*VM961155DXB*	47,500	35,200	16.00	12.50	44,000	35,600	47,000	9.20	34,000	1,500	6498094
	CA*F4961*6D*+TXV	ADV80805C*B*	47,000	34,800	15.50	12.00	43,500	35,200	46,000	9.20	30,000	1,500	6498095
	CA*F4961*6D*+TXV	ADV81005C*B*	47,500	35,200	15.50	12.00	44,000	35,600	46,000	9.20	30,000	1,620	6498096
	CA*F4961*6D*+TXV	G*VC80805C*B*	47,000	34,800	15.50	12.00	43,500	35,200	46,000	9.20	30,000	1,510	6498097
	CA*F4961*6D*+TXV	G*VC960804CNA*	47,000	34,800	15.50	12.50	43,500	35,200	47,000	9.00	32,000	1,600	7360651
	CA*F4961*6D*+TXV	G*VC961005CNA*	47,000	34,800	15.00	12.00	43,500	35,200	47,000	9.00	32,000	1,550	7360653
	CA*F4961*6D*+TXV	G*VC961205DNA*	47,000	34,800	16.00	12.50	43,500	35,200	47,000	9.00	32,000	1,600	7360655
	CA*F4961*6D*+TXV	G*VM970804CNA*	47,000	34,800	15.50	12.50	43,500	35,200	47,000	9.00	32,000	1,600	7360674
	CA*F4961*6D*+TXV	G*VM971005CNA*	47,000	34,800	15.00	12.00	43,500	35,200	47,000	9.00	32,000	1,550	7360676
	CA*F4961*6D*+TXV	G*VM971205DNA*	47,000	34,800	16.00	12.50	43,500	35,200	47,000	9.00	32,000	1,600	7360678
	CA*F4961*6D*+TXV	A*VC960804CNA*	47,000	34,800	15.50	12.50	43,500	35,200	47,000	9.00	32,000	1,600	7360703
	CA*F4961*6D*+TXV	A*VC961005CNA*	47,000	34,800	15.00	12.00	43,500	35,200	47,000	9.00	32,000	1,550	7360705
	CA*F4961*6D*+TXV	A*VC961205DNA*	47,000	34,800	16.00	12.50	43,500	35,200	47,000	9.00	32,000	1,600	7360707
CA*F4961*6D*+TXV	A*VM970804CNA*	47,000	34,800	15.50	12.50	43,500	35,200	47,000	9.00	32,000	1,600	7360726	
CA*F4961*6D*+TXV	A*VM971005CNA*	47,000	34,800	15.00	12.00	43,500	35,200	47,000	9.00	32,000	1,550	7360728	
CA*F4961*6D*+TXV	A*VM971205DNA*	47,000	34,800	16.00	12.50	43,500	35,200	47,000	9.00	32,000	1,600	7360730	
CA*F4961*6D*+TXV	G*EC961004CNA*	47,000	34,800	15.00	12.00	43,500	35,200	47,000	9.00	32,000	1,550	7368150	
CA*F4961*6D*+TXV	G*EC961205DNA*	47,000	34,800	15.00	12.00	43,500	35,200	47,000	9.00	32,000	1,520	7368152	
CA*F4961*6D*+TXV	A*EC961004CNA*	47,000	34,800	15.00	12.00	43,500	35,200	47,000	9.00	32,000	1,550	7368185	
CA*F4961*6D*+TXV	A*EC961205DNA*	47,000	34,800	15.00	12.00	43,500	35,200	47,000	9.00	32,000	1,520	7368187	

See Notes on Page 33.

OUTDOOR UNIT	INDOOR UNITS		COOLING CAPACITY (BTU/H)				TVA RATINGS ³		HEATING CAPACITY			CFM	AHRI #
	COILS/AIR HANDLERS	FURNACES	TOTAL	SENS.	SEER ¹	EER ²	TOTAL	SENS.	HI	HSPF ⁴	Low		
DSZC16 0481A* (cont.)	CHPF4860D6D*+MBVC2000**-1A*+TXV		47,500	35,200	16.00	12.50	44,000	35,600	47,000	9.20	34,000	1,550	3654680
	CHPF4860D6D*+TXV	A*VC80805C*B*	47,500	35,200	15.50	12.00	44,000	35,600	46,000	9.20	30,000	1,510	5265336
	CHPF4860D6D*+TXV	A*VC81005C*B*	47,500	35,200	15.50	12.00	44,000	35,600	46,000	9.20	30,000	1,610	5265337
	CHPF4860D6D*+TXV	G*VC950704CXB*	47,500	35,200	16.00	12.50	44,000	35,600	47,000	9.20	34,000	1,500	5623034
	CHPF4860D6D*+TXV	G*VC950905CXB*	47,500	35,200	16.00	12.50	44,000	35,600	47,000	9.20	34,000	1,500	5623039
	CHPF4860D6D*+TXV	G*VC950905DXB*	47,500	35,200	16.00	12.50	44,000	35,600	47,000	9.20	34,000	1,500	5623042
	CHPF4860D6D*+TXV	G*VC951155DXB*	47,500	35,200	16.00	12.50	44,000	35,600	47,000	9.20	34,000	1,500	5623047
	CHPF4860D6D*+TXV	A*VM960604CXB*	47,500	35,200	16.00	12.50	44,000	35,600	47,000	9.20	34,000	1,500	5623051
	CHPF4860D6D*+TXV	G*VM960604CXB*	47,500	35,200	16.00	12.50	44,000	35,600	47,000	9.20	34,000	1,500	5623052
	CHPF4860D6D*+TXV	G*VM960805CXB*	47,500	35,200	16.00	12.50	44,000	35,600	47,000	9.20	34,000	1,500	5623054
	CHPF4860D6D*+TXV	G*VM960805DXB*	47,500	35,200	16.00	12.50	44,000	35,600	47,000	9.20	34,000	1,500	5623056
	CHPF4860D6D*+TXV	G*VM961005DXB*	47,500	35,200	16.00	12.50	44,000	35,600	47,000	9.20	34,000	1,500	5623058
	CHPF4860D6D*+TXV	G*VM961155DXB*	47,500	35,200	16.00	12.50	44,000	35,600	47,000	9.20	34,000	1,500	5623060
	CHPF4860D6D*+TXV	A*VC950704CXB*	47,500	35,200	16.00	12.50	44,000	35,600	47,000	9.20	34,000	1,500	6498098
	CHPF4860D6D*+TXV	A*VC950905CXB*	47,500	35,200	16.00	12.50	44,000	35,600	47,000	9.20	34,000	1,500	6498099
	CHPF4860D6D*+TXV	A*VC950905DXB*	47,500	35,200	16.00	12.50	44,000	35,600	47,000	9.20	34,000	1,500	6498100
	CHPF4860D6D*+TXV	A*VC951155DXB*	47,500	35,200	16.00	12.50	44,000	35,600	47,000	9.20	34,000	1,500	6498101
	CHPF4860D6D*+TXV	A*VM960805CXB*	47,500	35,200	16.00	12.50	44,000	35,600	47,000	9.20	34,000	1,500	6498102
	CHPF4860D6D*+TXV	A*VM960805DXB*	47,500	35,200	16.00	12.50	44,000	35,600	47,000	9.20	34,000	1,500	6498103
	CHPF4860D6D*+TXV	A*VM961005DXB*	47,500	35,200	16.00	12.50	44,000	35,600	47,000	9.20	34,000	1,500	6498104
	CHPF4860D6D*+TXV	A*VM961155DXB*	47,500	35,200	16.00	12.50	44,000	35,600	47,000	9.20	34,000	1,500	6498105
	CHPF4860D6D*+TXV	G*VC80805C*B*	47,500	35,200	15.50	12.00	44,000	35,600	46,000	9.20	30,000	1,510	6498106
	CHPF4860D6D*+TXV	G*VC81005C*B*	47,500	35,200	15.50	12.00	44,000	35,600	46,000	9.20	30,000	1,610	6498107
	CHPF4860D6D*+TXV	G*VC960804CNA*	47,000	34,800	15.50	12.50	43,500	35,200	47,000	9.00	32,000	1,600	7360652
	CHPF4860D6D*+TXV	G*VC961005CNA*	47,000	34,800	15.00	12.00	43,500	35,200	47,000	9.00	32,000	1,550	7360654
	CHPF4860D6D*+TXV	G*VC961205DNA*	47,000	34,800	16.00	12.50	43,500	35,200	47,000	9.00	32,000	1,600	7360656
	CHPF4860D6D*+TXV	G*VM970804CNA*	47,000	34,800	15.50	12.50	43,500	35,200	47,000	9.00	32,000	1,600	7360675
	CHPF4860D6D*+TXV	G*VM971005CNA*	47,000	34,800	15.00	12.00	43,500	35,200	47,000	9.00	32,000	1,550	7360677
	CHPF4860D6D*+TXV	G*VM971205DNA*	47,000	34,800	16.00	12.50	43,500	35,200	47,000	9.00	32,000	1,600	7360679
	CHPF4860D6D*+TXV	A*VC960804CNA*	47,000	34,800	15.50	12.50	43,500	35,200	47,000	9.00	32,000	1,600	7360704
	CHPF4860D6D*+TXV	A*VC961005CNA*	47,000	34,800	15.00	12.00	43,500	35,200	47,000	9.00	32,000	1,550	7360706
	CHPF4860D6D*+TXV	A*VC961205DNA*	47,000	34,800	16.00	12.50	43,500	35,200	47,000	9.00	32,000	1,600	7360708
	CHPF4860D6D*+TXV	A*VM970804CNA*	47,000	34,800	15.50	12.50	43,500	35,200	47,000	9.00	32,000	1,600	7360727
	CHPF4860D6D*+TXV	A*VM971005CNA*	47,000	34,800	15.00	12.00	43,500	35,200	47,000	9.00	32,000	1,550	7360729
	CHPF4860D6D*+TXV	A*VM971205DNA*	47,000	34,800	16.00	12.50	43,500	35,200	47,000	9.00	32,000	1,600	7360731
	CHPF4860D6D*+TXV	G*EC961004CNA*	47,000	34,800	15.00	12.00	43,500	35,200	47,000	9.00	32,000	1,550	7368151
	CHPF4860D6D*+TXV	G*EC961205DNA*	47,000	34,800	15.00	12.00	43,500	35,200	47,000	9.00	32,000	1,520	7368153
	CHPF4860D6D*+TXV	A*EC961004CNA*	47,000	34,800	15.00	12.00	43,500	35,200	47,000	9.00	32,000	1,550	7368186
	CHPF4860D6D*+TXV	A*EC961205DNA*	47,000	34,800	15.00	12.00	43,500	35,200	47,000	9.00	32,000	1,520	7368188
	CSCF4860N6D*+TXV	G*VC950704CXB*	47,500	35,200	16.00	12.50	44,000	35,600	47,000	9.00	34,000	1,575	5623035
	CSCF4860N6D*+TXV	G*VC950905CXB*	47,500	35,200	16.00	12.50	44,000	35,600	47,000	9.00	34,000	1,575	5623040
	CSCF4860N6D*+TXV	G*VC950905DXB*	47,500	35,200	16.00	12.50	44,000	35,600	47,000	9.00	34,000	1,575	5623043
	CSCF4860N6D*+TXV	G*VC951155DXB*	47,500	35,200	16.00	12.50	44,000	35,600	47,000	9.20	34,000	1,550	5623048
	CSCF4860N6D*+TXV	A*VC950704CXB*	47,500	35,200	16.00	12.50	44,000	35,600	47,000	9.00	34,000	1,575	6498108
	CSCF4860N6D*+TXV	A*VC950905CXB*	47,500	35,200	16.00	12.50	44,000	35,600	47,000	9.00	34,000	1,575	6498109
	CSCF4860N6D*+TXV	A*VC950905DXB*	47,500	35,200	16.00	12.50	44,000	35,600	47,000	9.00	34,000	1,575	6498110
	CSCF4860N6D*+TXV	A*VC951155DXB*	47,500	35,200	16.00	12.50	44,000	35,600	47,000	9.20	34,000	1,550	6498111

See Notes on Page 33.

OUTDOOR UNIT	INDOOR UNITS		COOLING CAPACITY (BTU/H)				TVA RATINGS ³		HEATING CAPACITY			CFM	AHRI #
	COILS/AIR HANDLERS	FURNACES	TOTAL	SENS.	SEER ¹	EER ²	TOTAL	SENS.	HI	HSPF ⁴	Low		
DSZC16 0601B*	AVPTC60D14A*		57,000	41,000	16.00	12.00	53,000	41,500	57,000	9.00	36,200	1,700	5933261
	CA*F4961*6D*+MBVC2000**-1A*+TXV		57,000	41,000	16.00	12.50	53,000	41,500	56,500	9.10	35,800	1,600	4514554
	CA*F4961*6D*+TXV	G*VC80805C*B*	55,000	39,500	15.50	12.00	51,000	40,000	56,000	9.10	35,400	1,580	5038635
	CA*F4961*6D*+TXV	G*VC81005C*B*	55,500	40,000	15.50	12.00	51,500	40,500	56,000	9.10	35,600	1,800	5038710
	CA*F4961*6D*+TXV	A*VC80805C*B*	55,000	39,500	15.50	12.00	51,000	40,000	56,000	9.10	35,400	1,580	5038754
	CA*F4961*6D*+TXV	ADVC80805C*B*	54,500	39,000	15.00	12.00	50,500	40,000	56,000	9.10	35,400	1,580	5038772
	CA*F4961*6D*+TXV	ADVC81005C*B*	55,500	40,000	15.50	12.00	51,500	40,500	56,000	9.10	35,600	1,820	5038792
	CA*F4961*6D*+TXV	A*VC81005C*B*	55,500	40,000	15.50	12.00	51,500	40,500	56,000	9.10	35,600	1,800	5038800
	CA*F4961*6D*+TXV	G*VC950905CXB*	55,500	40,000	15.40	11.90	51,500	40,500	56,500	9.05	36,000	1,600	5623061
	CA*F4961*6D*+TXV	G*VC950905DXB*	55,500	40,000	15.90	12.20	51,500	40,500	56,000	9.15	35,800	1,600	5623064
	CA*F4961*6D*+TXV	A*VC950915DXB*	55,500	40,000	15.80	12.20	51,500	40,500	56,000	9.15	35,800	1,650	5623067
	CA*F4961*6D*+TXV	G*VC950915DXB*	55,500	40,000	15.80	12.20	51,500	40,500	56,000	9.15	35,800	1,650	5623068
	CA*F4961*6D*+TXV	G*VC951155DXB*	55,500	40,000	15.50	12.10	51,500	40,500	56,000	9.05	35,800	1,600	5623069
	CA*F4961*6D*+TXV	G*VM960805CXB*	55,500	40,000	15.40	11.90	51,500	40,500	56,500	9.05	36,000	1,600	5623072
	CA*F4961*6D*+TXV	G*VM960805DXB*	55,500	40,000	15.80	12.20	51,500	40,500	56,000	9.15	35,800	1,650	5623074
	CA*F4961*6D*+TXV	G*VM961005DXB*	55,500	40,000	15.50	12.10	51,500	40,500	56,000	9.05	35,800	1,600	5623076
	CA*F4961*6D*+TXV	G*VM961155DXB*	55,500	40,000	15.50	12.10	51,500	40,500	56,000	9.05	35,800	1,600	5623078
	CA*F4961*6D*+TXV	A*VC950905CXB*	55,500	40,000	15.40	11.90	51,500	40,500	56,500	9.05	36,000	1,600	6498112
	CA*F4961*6D*+TXV	A*VC950905DXB*	55,500	40,000	15.90	12.20	51,500	40,500	56,000	9.15	35,800	1,600	6498113
	CA*F4961*6D*+TXV	A*VC951155DXB*	55,500	40,000	15.50	12.10	51,500	40,500	56,000	9.05	35,800	1,600	6498114
	CA*F4961*6D*+TXV	A*VM960805CXB*	55,500	40,000	15.40	11.90	51,500	40,500	56,500	9.05	36,000	1,600	6498115
	CA*F4961*6D*+TXV	A*VM960805DXB*	55,500	40,000	15.80	12.20	51,500	40,500	56,000	9.15	35,800	1,650	6498116
	CA*F4961*6D*+TXV	A*VM961005DXB*	55,500	40,000	15.50	12.10	51,500	40,500	56,000	9.05	35,800	1,600	6498117
	CA*F4961*6D*+TXV	A*VM961155DXB*	55,500	40,000	15.50	12.10	51,500	40,500	56,000	9.05	35,800	1,600	6498118
	CA*F4961*6D*+TXV	G*VC961205DNA*	55,500	40,000	15.50	12.00	51,500	40,500	56,000	9.00	35,000	1,600	7360657
	CA*F4961*6D*+TXV	G*VM971205DNA*	55,500	40,000	15.50	12.00	51,500	40,500	56,000	9.00	35,000	1,600	7360680
	CA*F4961*6D*+TXV	A*VC961205DNA*	55,500	40,000	15.50	12.00	51,500	40,500	56,000	9.00	35,000	1,600	7360709
	CA*F4961*6D*+TXV	A*VM971205DNA*	55,500	40,000	15.50	12.00	51,500	40,500	56,000	9.00	35,000	1,600	7360732
	CA*F4961*6D*+TXV	G*EC961205DNA*	55,500	40,000	15.50	12.00	51,500	40,500	56,000	9.00	35,000	1,520	7368154
	CA*F4961*6D*+TXV	A*EC961205DNA*	55,500	40,000	15.50	12.00	51,500	40,500	56,000	9.00	35,000	1,520	7368189
	CHPF4860D6D*+MBVC2000**-1A*+TXV		56,000	40,500	16.00	12.70	52,000	41,000	55,500	9.20	35,200	1,600	4236528
	CHPF4860D6D*+TXV	G*VC80805C*B*	55,000	39,500	15.50	12.00	51,000	40,000	55,500	9.10	35,200	1,590	5038605
	CHPF4860D6D*+TXV	G*VC81005C*B*	55,500	40,000	15.50	12.00	51,500	40,500	56,000	9.10	35,400	1,800	5038697
	CHPF4860D6D*+TXV	A*VC80805C*B*	55,000	39,500	15.50	12.00	51,000	40,000	55,500	9.10	35,200	1,590	5038727
	CHPF4860D6D*+TXV	A*VC81005C*B*	55,500	40,000	15.50	12.00	51,500	40,500	56,000	9.10	35,400	1,800	5038793
	CHPF4860D6D*+TXV	G*VC950905CXB*	55,000	39,500	15.50	12.00	51,000	40,000	56,000	9.10	35,800	1,600	5623062
	CHPF4860D6D*+TXV	G*VC950905DXB*	55,500	40,000	15.90	12.20	51,500	40,500	56,000	9.20	35,600	1,600	5623065
	CHPF4860D6D*+TXV	G*VC951155DXB*	55,000	39,500	15.50	12.10	51,000	40,000	56,000	9.10	35,800	1,600	5623070
	CHPF4860D6D*+TXV	G*VM960805CXB*	55,000	39,500	15.50	12.00	51,000	40,000	56,000	9.10	35,800	1,600	5623073
	CHPF4860D6D*+TXV	G*VM960805DXB*	55,500	40,000	15.90	12.20	51,500	40,500	56,000	9.15	35,600	1,650	5623075
	CHPF4860D6D*+TXV	G*VM961005DXB*	55,000	39,500	15.50	12.10	51,000	40,000	56,000	9.10	35,800	1,600	5623077
	CHPF4860D6D*+TXV	G*VM961155DXB*	55,000	39,500	15.50	12.10	51,000	40,000	56,000	9.10	35,800	1,600	5623079
	CHPF4860D6D*+TXV	A*VC950905CXB*	55,000	39,500	15.50	12.00	51,000	40,000	56,000	9.10	35,800	1,600	6498119
	CHPF4860D6D*+TXV	A*VC950905DXB*	55,500	40,000	15.90	12.20	51,500	40,500	56,000	9.20	35,600	1,600	6498120
	CHPF4860D6D*+TXV	A*VC951155DXB*	55,000	39,500	15.50	12.10	51,000	40,000	56,000	9.10	35,800	1,600	6498121
	CHPF4860D6D*+TXV	A*VM960805CXB*	55,000	39,500	15.50	12.00	51,000	40,000	56,000	9.10	35,800	1,600	6498122
	CHPF4860D6D*+TXV	A*VM960805DXB*	55,500	40,000	15.90	12.20	51,500	40,500	56,000	9.15	35,600	1,650	6498123

See Notes on Page 33.

OUTDOOR UNIT	INDOOR UNITS		COOLING CAPACITY (BTU/h)				TVA RATINGS ³		HEATING CAPACITY			CFM	AHRI #
	COILS/AIR HANDLERS	FURNACES	TOTAL	SENS.	SEER ¹	EER ²	TOTAL	SENS.	Hi	HSPF ⁴	Low		
DSZC16 0601B* (cont.)	CHPF4860D6D*+TXV	A*VM961005DXB*	55,000	39,500	15.50	12.10	51,000	40,000	56,000	9.10	35,800	1,600	6498124
	CHPF4860D6D*+TXV	A*VM961155DXB*	55,000	39,500	15.50	12.10	51,000	40,000	56,000	9.10	35,800	1,600	6498125
	CHPF4860D6D*+TXV	G*VC961205DNA*	55,000	39,500	15.50	12.00	51,000	40,000	56,000	9.00	35,000	1,600	7360658
	CHPF4860D6D*+TXV	G*VM971205DNA*	55,000	39,500	15.50	12.00	51,000	40,000	56,000	9.00	35,000	1,600	7360681
	CHPF4860D6D*+TXV	A*VC961205DNA*	55,000	39,500	15.50	12.00	51,000	40,000	56,000	9.00	35,000	1,600	7360710
	CHPF4860D6D*+TXV	A*VM971205DNA*	55,000	39,500	15.50	12.00	51,000	40,000	56,000	9.00	35,000	1,600	7360733
	CHPF4860D6D*+TXV	G*EC961205DNA*	55,000	39,500	15.00	12.00	51,000	40,000	56,000	9.00	35,000	1,520	7368155
	CHPF4860D6D*+TXV	A*EC961205DNA*	55,000	39,500	15.00	12.00	51,000	40,000	56,000	9.00	35,000	1,520	7368190
	CSCF4860N6D*+TXV	G*VC950905CXB*	55,500	40,000	15.50	12.30	51,500	40,500	56,500	9.00	35,800	1,675	5623063
	CSCF4860N6D*+TXV	G*VC950905DXB*	55,500	40,000	15.50	12.30	51,500	40,500	56,500	9.00	35,800	1,675	5623066
	CSCF4860N6D*+TXV	G*VC951155DXB*	55,500	40,000	15.50	12.20	51,500	40,500	56,500	9.00	35,800	1,850	5623071
	CSCF4860N6D*+TXV	A*VC950905CXB*	55,500	40,000	15.50	12.30	51,500	40,500	56,500	9.00	35,800	1,675	6498126
	CSCF4860N6D*+TXV	A*VC950905DXB*	55,500	40,000	15.50	12.30	51,500	40,500	56,500	9.00	35,800	1,675	6498127
	CSCF4860N6D*+TXV	A*VC951155DXB*	55,500	40,000	15.50	12.20	51,500	40,500	56,500	9.00	35,800	1,850	6498128

¹ Seasonal Energy Efficiency Ratio; Certified per ARI 210/240 @ 80°F/ 67°F/ 95°F

² Energy Efficiency Ratio @ 80°F/ 67°F/ 95°F

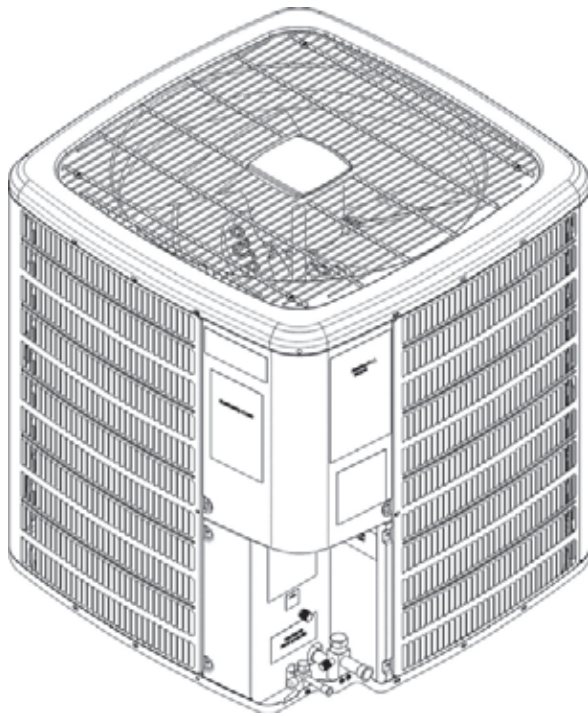
³ TVA Rating: BTU/h @ 75°F/ 63°F - 95°F

⁴ HSPF = Heating Seasonal Performance Factor

Notes

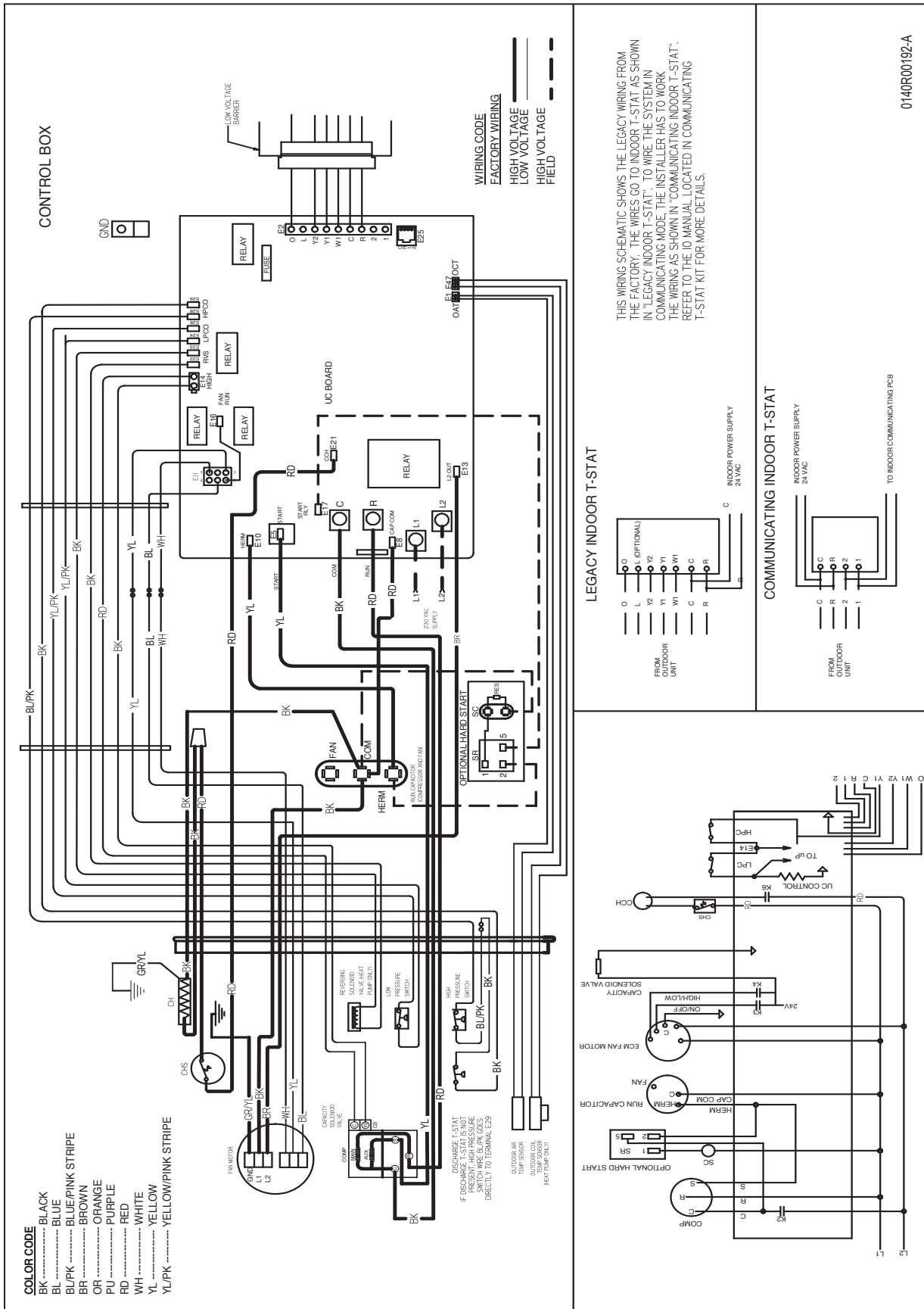
- Always check the S&R plate for electrical data on the unit being installed.
- When matching outdoor unit to indoor unit, use the piston supplied with the outdoor unit or that specified on the piston kit chart supplied with the indoor unit.
- EEP - Order from Service Dept. Part No. B13707-38 or new Solid State Board B13707-35S. Part No. B13707-38 is not interchangeable with B13707-35S. The Goodman Gas Furnace contains the EEP cooling time delay

DIMENSIONS



MODEL	DIMENSIONS		
	W"	D"	H"
DSZC160241A	29	29	38 $\frac{1}{4}$
DSZC160361A	35 $\frac{1}{2}$	35 $\frac{1}{2}$	38 $\frac{1}{4}$
DSZC160481A	35 $\frac{1}{2}$	35 $\frac{1}{2}$	38 $\frac{1}{4}$
DSZC160601A	35 $\frac{1}{2}$	35 $\frac{1}{2}$	38 $\frac{1}{4}$
DSZC160601B	35 $\frac{1}{2}$	35 $\frac{1}{2}$	38 $\frac{1}{4}$

WIRING DIAGRAM

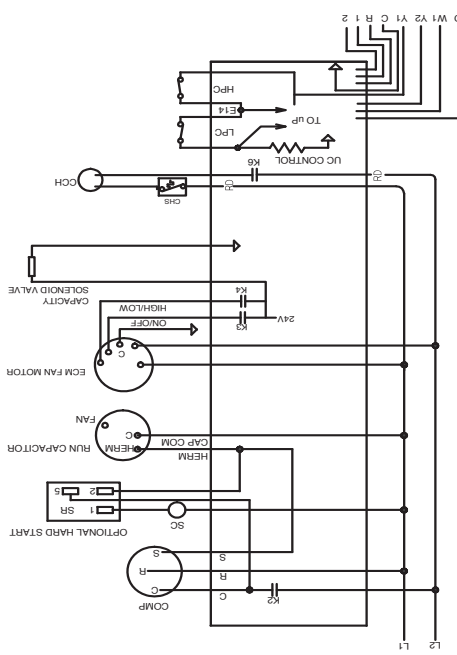
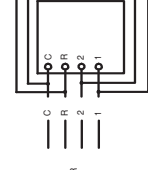


THIS WIRING SCHEMATIC SHOWS THE LEGACY WIRING FROM THE FACTORY. THE WIRES GO TO INDOOR T-STAT AS SHOWN IN 'LEGACY INDOOR T-STAT'. TO WIRE THE SYSTEM IN 'COMMUNICATING MODE' THE INSTALLER HAS TO WORK THE WIRING AS SHOWN IN 'COMMUNICATING INDOOR T-STAT'. REFER TO THE IO MANUAL LOCATED IN COMMUNICATING T-STAT KIT FOR MORE DETAILS.

LEGACY INDOOR T-STAT



COMMUNICATING INDOOR T-STAT



Wiring is subject to change. Always refer to the wiring diagram or the unit for the most up-to-date wiring.

WARNING

High Voltage: Disconnect all power before servicing or installing this unit. Multiple power sources may be present. Failure to do so may cause property damage, personal injury, or death.

0140R00192-A

ACCESSORIES

MODEL	DESCRIPTION	DSZC16 024**	DSZC16 036**	DSZC16 048**	DSZC16 060**
ABK-20	Anchor Bracket Kit ⁰				
B1141643 ¹	24V Transformer	X	X	X	X
CSR-U-1	Hard-start Kit	X	X	X	
CSR-U-2	Hard-start Kit				
CSR-U-3	Hard-start Kit				X
FSK01A ²	Freeze Protection Kit	X	X	X	X
OT18-60A ³	Outdoor Thermostat/Lockout Thermostat	X	X	X	X
TX2N4	TXV Kit				
TX2N4A	TXV Kit	X			
TX3N4	TXV Kit		X		
TX5N4	TXV Kit			X	X

⁰ Contains 20 brackets; four brackets needed to anchor unit to pad

¹ Available in 24V legacy mode only. This feature is integrated in the communicating mode.

² Installed on indoor coil

³ Available in 24V legacy mode only. This feature is integrated in the communicating mode. Required for heat pump applications where ambient temperature falls below 0 °F with 50% or higher relative humidity.

Note: Maximum number of installed accessories at the same time is limited by the size of the unit's control box.